



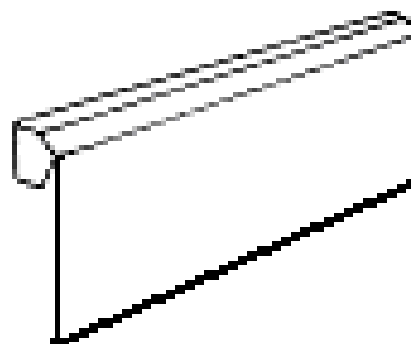
# SC2500 MASTERSHADE®

## Exterior Rolling Screen / Open Roll

The SC2500 Maxi & Zipper screen is our open roll screen. The SC2500 is operated with a standard with a manual gear and hand crank or an optional convenient motor. The screen comes standard with cables or our standard 3000 series track. The Zipper version uses our standard 2500 zip track.

Type	Standard Frame Colors	Standard Widths	Standard Heights	Recommended Applications	Recommended Fabrics
Screen Exterior Retractable	9 standard Sunair colors	Through 20' Wider with split	Through 16' Depending on Fabric type	Residential & Commercial Windows,	Various Mesh & Acrylic Fabrics

- Open roller type screen with optional hood.
- Standard track, Zipper track, or Cables to fit virtually all installation types.
- Available with mesh, acrylic fabric, or solid vinyl fabric & windows.
- Manual operation with gear standard.
- Motorized with remote control available.



# BENEFITS OF SOLAR SCREENS



Screen fully lowered down



Screen partially lowered down

- **Reduces indoor temperatures and saves energy cooling your space.**
- **Cuts down on solar glare while retaining your view depending on mesh fabric type and openness factor.**
- **Cuts down on interior fading of floors, carpets and furniture.**
- **Can offer complete black out privacy blocking all light.**

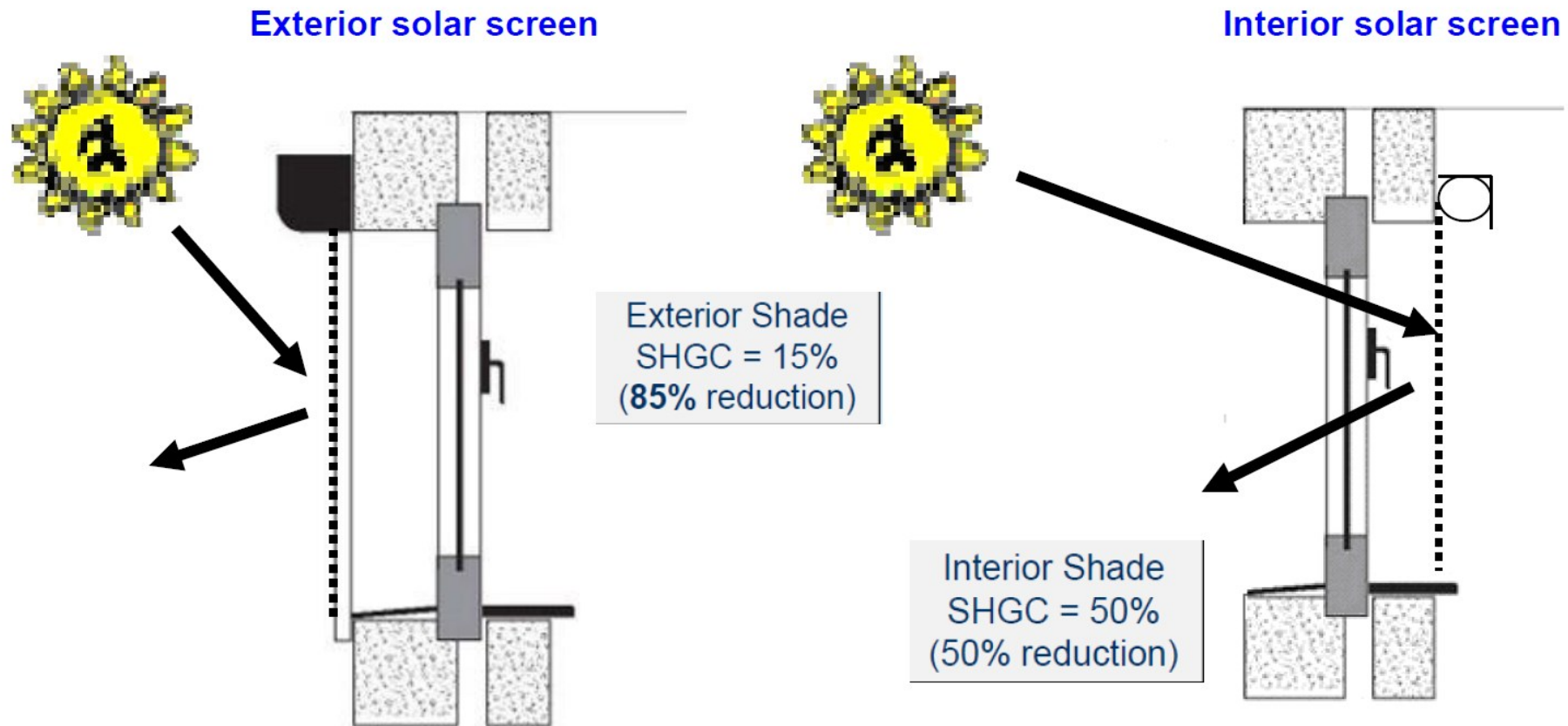


Screen partially down showing glare



Screen fully down and no glare

## BENEFITS OF SOLAR SCREENS cont:



Solar screens can be installed both on the exterior and interior applications of residential and commercial spaces. The benefit with exterior solar screens is that the fabric blocks the sun before it enters the home or space through the glass. Sometimes it is not feasible to install an exterior screen. In such a case, interior screens offer a good alternative. Interior screens are also more economical.



# **BENEFITS OF ZIPPER SCREENS WITH MESH**



- Creates an instant screened in porch with the ability to revert to a full open porch when desired.
- Zipper fabric retention will keep pesky bugs at bay when using a closed mesh fabric.
- Reduces patio temperatures and keeps your space cooler.
- Cuts down on solar glare while retaining your view depending on mesh fabric type and openness factor.
- Cuts down on interior fading of floors, carpets and furniture.





# BENEFITS OF ZIPPER SCREENS WITH WINDOWS



- Great for residential and commercial spaces like restaurants.
- Creates an instant enclosed space by lowering the shades.
- Keeps moderate weather at bay by keeping rain and moderate winds from reaching the space.
- Adding heaters will heat the space and make it usable during cooler months.



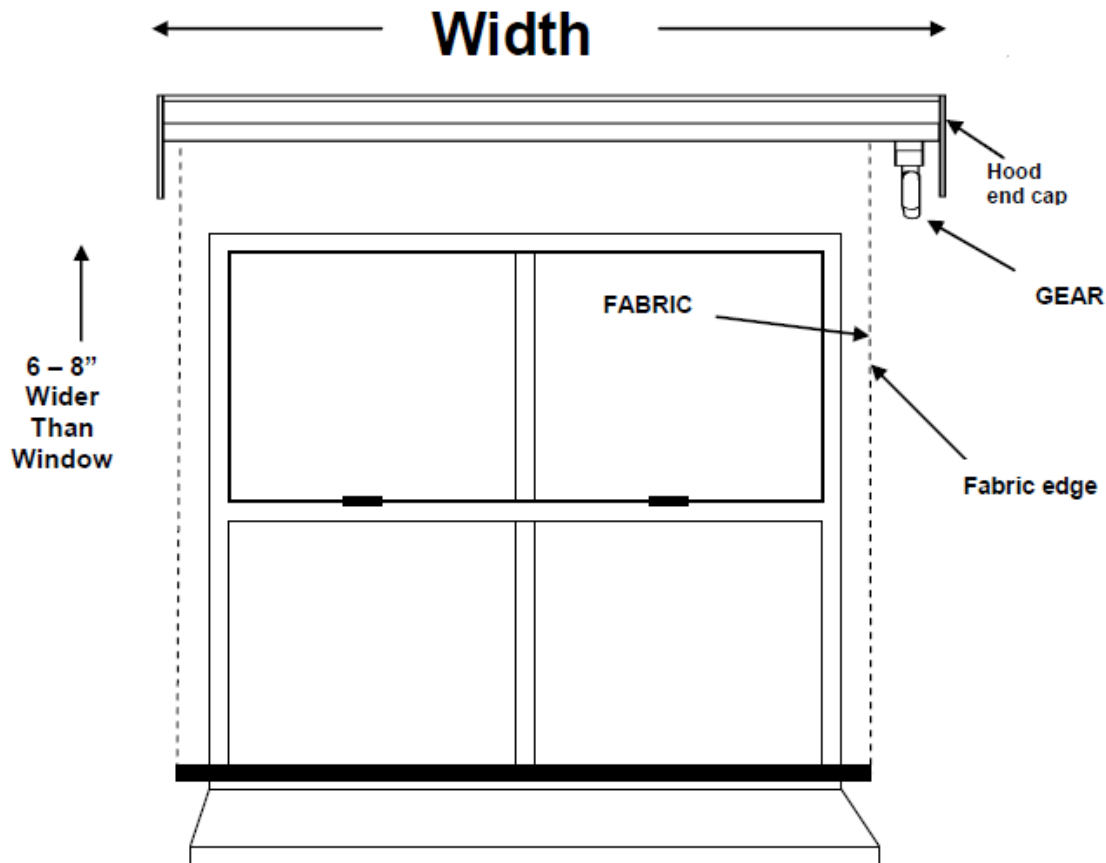


# SC2500 Mastershade® Installations



## **MEASURING SC2500 Maxi Screen :**

**WIDTH:** The width ordered is the measurement from one end of the bracket to the other end of bracket. If using standard track (SC3000 track) or guide cables, they will also be flush with the end of the Maxi bracket. The SC3000 standard track for the Maxi screen is 1 1/8" wide on each side of the unit. The zipper track used depends whether you are surface mounting or side wall mounting with "U" channels. The SC2503 standard zipper track can be either surface mounted or side wall mounted. In either case, the side track walls will be even with the outside edge of the Maxi bracket AU106. If mounting between columns and you want to utilize the "U" Channel, you must instead use the SC4500 standard tracks to fit in the U channel. Sunair will adjust the size of the fabric during production if using U channels and SC4500 track. Without this adjustment during production, you cannot add U channels later if standard SC2503 track was used. Regardless if your tracks or cables have to be installed at a certain predetermined position and adjust your width accordingly. You may have to verify that the bracket can be installed and bolted to the wall properly with sufficient support behind the wall. Make sure you take into account that the actual fabric width is always 3" - 4" less than the screen width ordered (See illustration below) and the optional hood is always 1" longer than the unit width if ordered.





## HEIGHT:

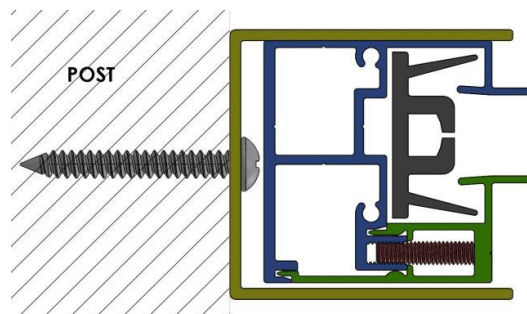
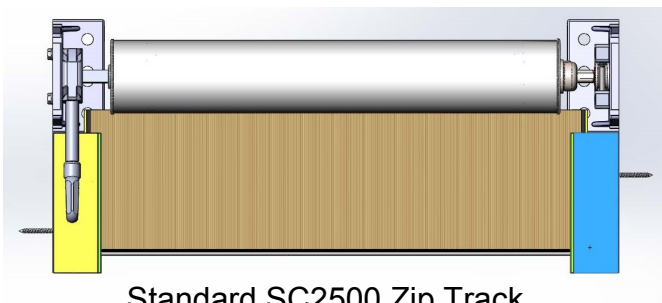
When measuring the height of the shade take the view from the window into consideration. When the drop curtain is retracted or extended down, the view should not be obstructed by the roller tube or hem bar. The roller assembly should be above the window and the hem bar should be below. Add 5" for the roller assembly and 2" for the Hem bar to the height of the window or opening if possible. This dimension becomes the height you order.

## TRACK WIDTHS:

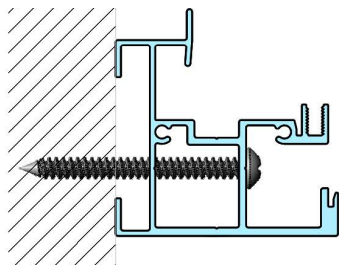
SC2500 Standard track is 1 1/8" wide on each side (See SC3000 technical data).

Standard SC2503 wall zipper track is 2" wide on each side ( see below).

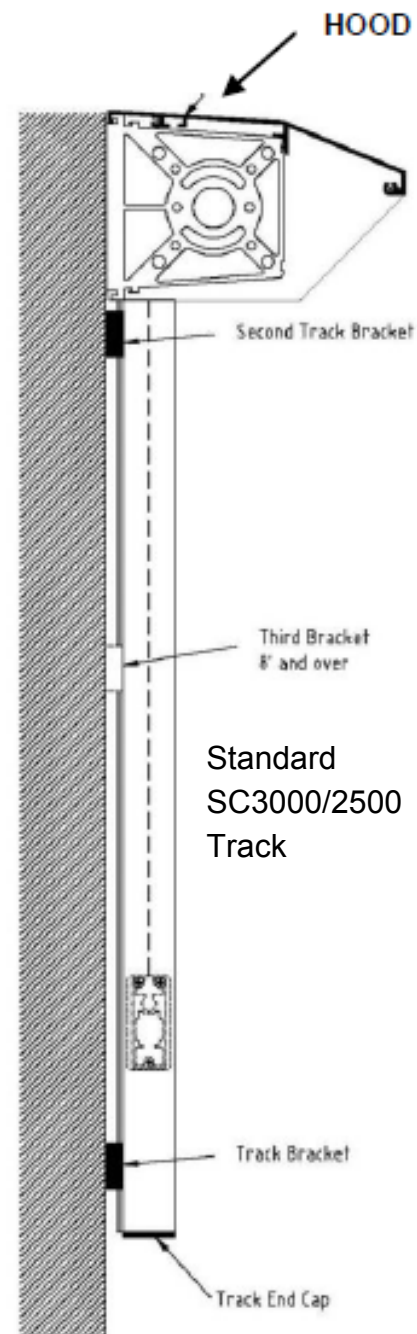
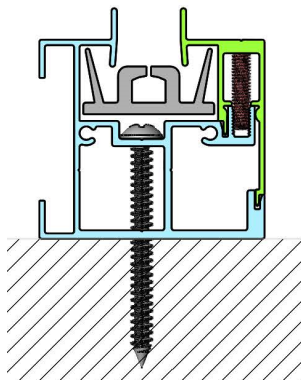
SC4500 Track w/ U channel is approx. 2 3/8" - 2 1/2" wide on each side / Together.



Standard SC4500 Zip Track  
with "U" Channels for uneven  
side wall mounting



Standard SC2500 Zip Track





# SC3000 MASTERSHADE®

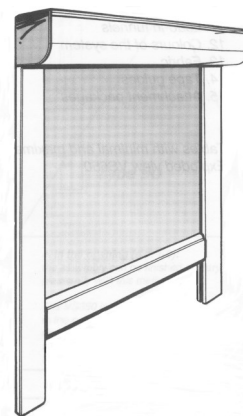
## Exterior Rolling Screen / Large Cassette

The SC3000 is our large box traditional exterior retractable vertical rolling screen system. The fabric runs inside vertical guide Tracks or Cable Guides by means of gravity. When the shade is retracted the fabric is stored in the built-in protective box. The weighted hem bar keeps the fabric taut. This Mastershade model is made of the highest quality extruded aluminum.

The SC3000 has a 5 3/8" x 5 1/8" Cassette box.

Type	Standard Frame Colors	Standard Widths	Standard Heights	Recommended Applications	Recommended Fabrics
Screen Exterior Retractable	9 standard Sunair colors	Through 18' 24' with split	Through 16' Depending on Fabric type	Residential & Commercial Windows	Various Mesh & Acrylic Fabrics

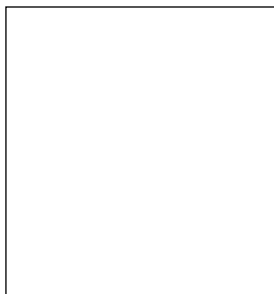
- Larger standard box screen.
- Capable of wider widths with fabric split.
- Gear or Motorized operation.
- Cabled or standard track available.



# FRAME COLORS ( STANDARD)

## *Awnings & Screens\**

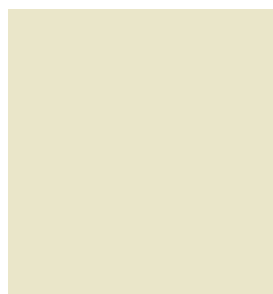
\*Note: See each model technical page for available frame colors.



**WHITE Gloss**  
Ral 9016



**MOCHA**  
Semi Gloss



**CREAM Gloss**  
Ral 1013



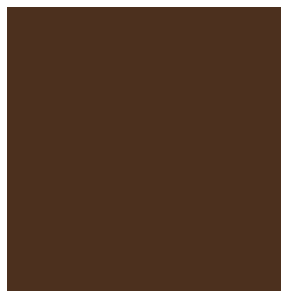
**BLACK Gloss**  
Ral 9005



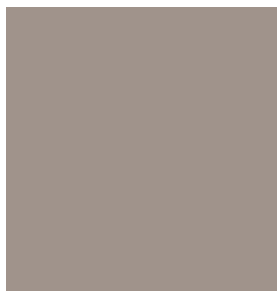
**BRONZE**  
Coarse



**GREY Gloss**  
Ral 7040



**BROWN Gloss**  
Ral 8019

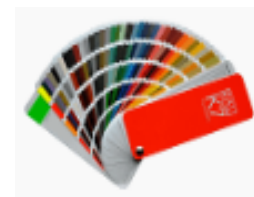


**TAUPE Gloss**  
Ral 7030



**GREEN Gloss**  
Ral 6005

### OPTIONAL



**FULL RAL COLOR  
RANGE / EXTRA COST**

**NOTE:** ACTUAL FRAME COLOR MAY VARY FROM DIGITAL IMAGES





RecScreen  
5000P

## Exterior Screen Fabric



300 Charcoal / Charcoal

### Specifications

---

**Composition:** 15% Polyester, 85% Vinyl

**Syle:** Basket Weave

**Mesh Weight:** 14,75 (oz/yd<sup>2</sup>)

**Openness Factor:** 5.5 %

**Fabric Thickness (in):** .026

**Width:** 118"

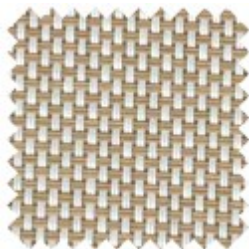
**Fire classification:** NFPA 701 Test 1, and CA Fire Marshall Title 19, Section 1237.1

**Warranty:** 5 years exterior

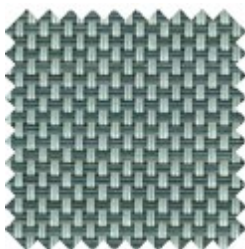
**Bacteria and Fungal Resistance:** AATCC Test Method 100-2004



001 White  
/ Linen



002 Blanco  
/ Sable



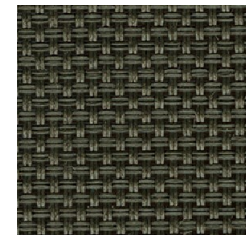
405 Pearl  
/ Dark Grey



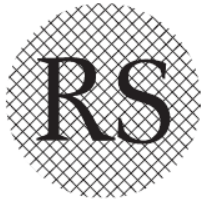
305 Charcoal  
/ Dark Grey



307 Charcoal  
/ Bronze



770 Bronze  
/ Bronze



RecScreen  
6000P

Exterior Screen Fabric



300 Charcoal / Charcoal

## Specifications

**Composition:** 18% Polyester, 82% Vinyl

**Style:** Twill

**Mesh Weight:** 17,8 (oz/yd<sup>2</sup>)

**Openness Factor:** 3 %

**Fabric Thickness (in):** .78 mm

**Width:** 118"

**Fire classification:** NFPA 701 Test 1, and CA Fire Marshall Title 19, Section 1237.1

**Warranty:** 10 Year Limited. Visit [www.recasensusa.com](http://www.recasensusa.com) for full warranty.

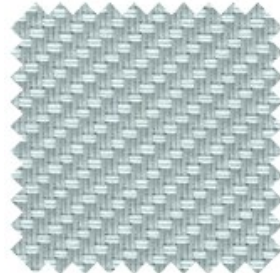
**Bacteria and Fungal Resistance:** AATCC Test Method 100-2004



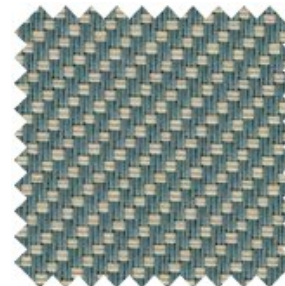
001 White  
/ Linen



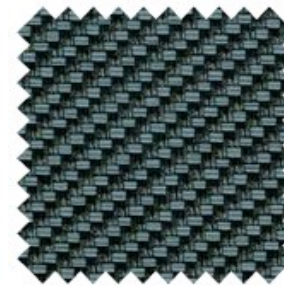
002 White  
/ Sable



004 White  
/ Pearl Grey



502 Dark  
Gray / Sable



503 Dark  
Gray / Charcoal



307 Charcoal  
/ Bronze



# PHIFER **TuffScreen®**

**Standard Heavy-Duty Insect Screening**

Exterior Screen Fabric  
Zipper Screens only



## Specifications

**Standard Color:** Black

**Standard Widths:** 36" (91.4cm), 48" (121.9cm), 60" (152.4cm), 72" (182.9cm), 84" (213.4cm), 96" (243.8cm), 108" (274.3cm) and 120" (304.8cm)

**Standard Roll Lengths:** 100' (30.48m) in all widths and 50' (15.24m) in all widths except 120"

**Packaging:** Individually wrapped in protective paper

- Heavy-duty, vinyl-coated polyester insect screening
- Ideal for use in high-traffic areas
- Durable – resists damage from pets, tears and punctures
- Excellent choice for patios, porch enclosures, retractable systems, windows and doors



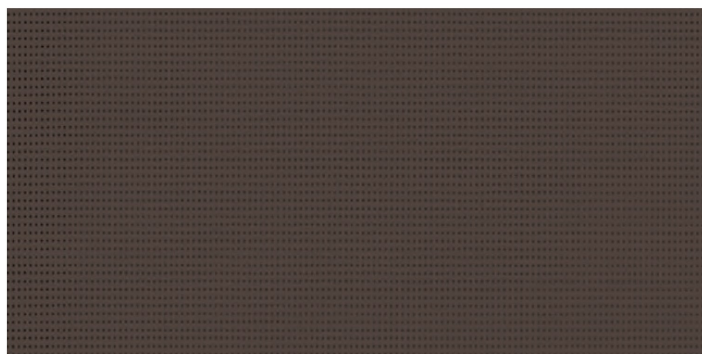


**Soltis**  
Horizon 86

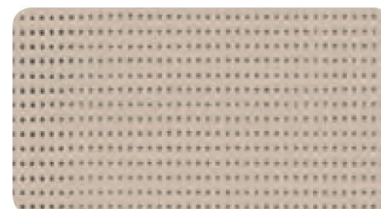
**Serge Ferrari**

14 % Open Screen Mesh

Exterior Screen Fabric



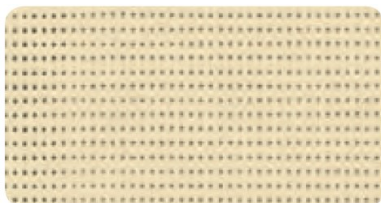
86-2043  
Bronze



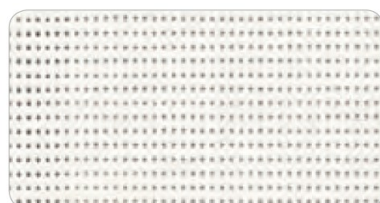
86 – 2135  
Sandy Beige



86 – 2053  
Black



86 – 2175  
Champagne



86 – 2044  
White



86 – 2012  
Pepper



86 – 2171  
Boulder

■ **Technical properties**

Openess factor	14%
Weight	380 g/m <sup>2</sup> — 11.2 oz/sqyd
Thickness	0.45 mm — 450 microns
Width	177 cm - 267 cm — 69.7 in. - 105.1 in.

Superior elongation and tear resistance

No deformation during processing and use

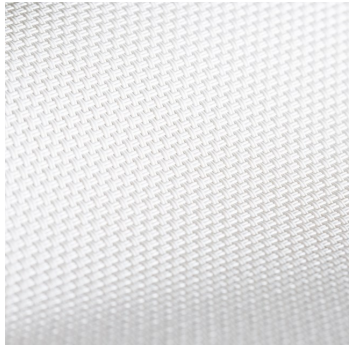
Superior aesthetic and mechanical durability

Smooth finish easy to clean, space saving, easy rolling

## Exterior Screen Fabric



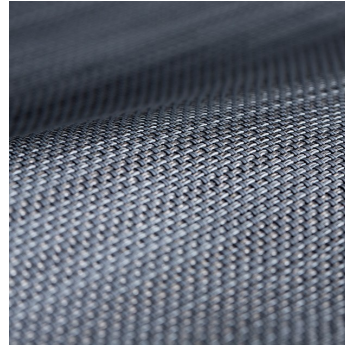
5 % Open Screen Mesh



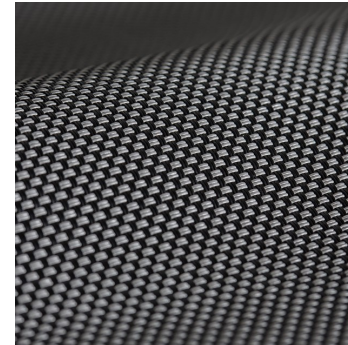
White



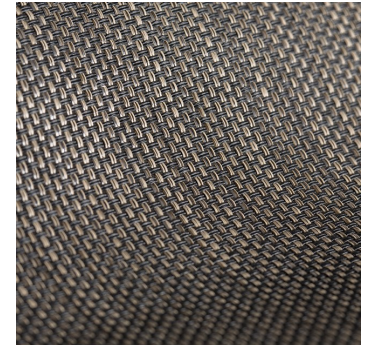
Stone Texture



ShadowTexture



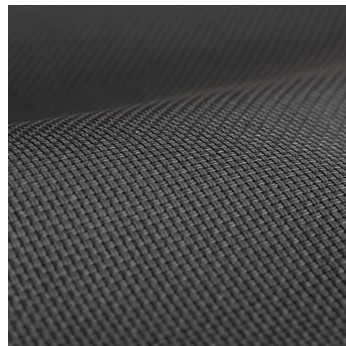
Granite



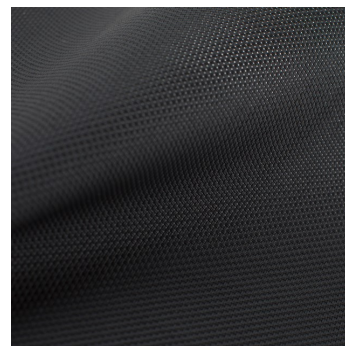
Expresso Texture



Tobacco



Charcoal



Flat Black



Bone

TEXTILENE® nano™ 95 is a durable, yet lightweight synthetic fabric. It is lighter and finer with the same technical qualities as the original TEXTILENE®. TEXTILENE® nano™95 is excellent for exterior use and can reduce energy costs while blocking up to 95% of the sun's harmful rays.





## 502 S2 FLEX LIGHT ADVANCED / OPAQUE COLORS

The Preconstraint 502 fabric from Ferrari also offers excellent dimensional stability with minimal stretching and exceptional dirt resistance thanks to a PVDF topcoat on both sides. The fabric is therefore perfect for use on retractable zipper screens with window film. The fabric is 16.7 oz / sq. yd. with a satin finish. Fabrics are fire retardant / certificate is available upon request.

502V2-8102C	502V2-2171C	502V2-2168C	502V2-2167C	502V2-8450C	502V2-8341C	502V2-8861C	502V2-50265C	502V2-2135C	502V2-2141C
502V2-2138C	502V2-2012C	502V2-2148C	502V2-2137C	502V2-2158C	502V2-50668C	502V2-50669C	502V2-50670C	502V2-8056C	502V2-2156C
502V2-2152C	502V2-8255C	502V2-2150C	502V2-8204C	502V2-2172C	502V2-20185C	502V2-50674C	502V2-2166C	502V2-50671C	502V2-50675C
502V2-50672C	502V2-50676C	502V2-50270C	502V2-50673C	502V2-50677C	502V2-2160C	502V2-2161C	502V2-1125C	502V2-2157C	502V2-8284C

satin finish



**TEMPOTEST®**  
ITALIAN PERFORMANCE FABRICS



**2018**

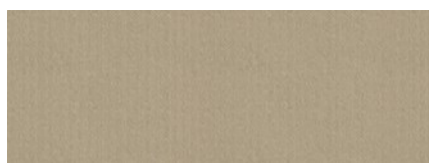
## ACRYLIC FABRIC COLLECTION



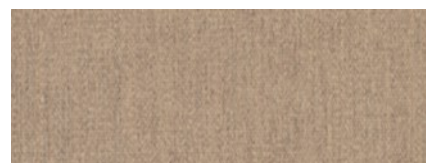
Fabric covers sewn with Tenara thread.



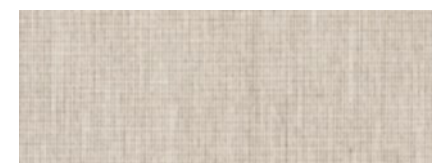
**101 Elite Toast**



**102 Cappuccino**



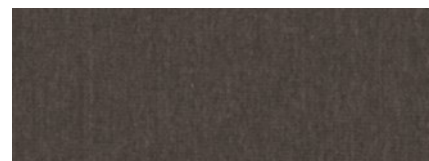
**106 Toffee**



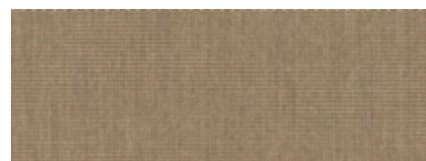
**986/15 Textured Lt. Grey**



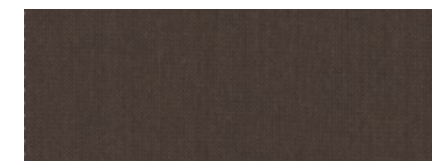
**727/15 Textured Med. Grey**



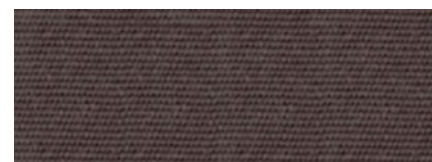
**107 Textured Dk. Grey**



**986/106 Textured Beige**



**873/2 Textured Cocoa**



**97/84 Plum**



**407/3 Green Classic Tweed**



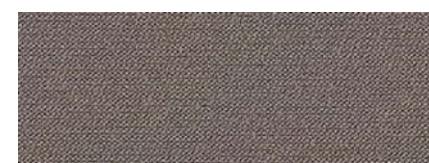
**407/16 Moss Classic Tweed**



**407/14 Toast Classic Tweed**



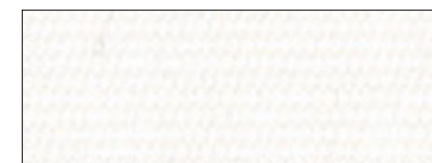
**407/926 Grey Classic Tweed**



**926 Taupe Classic Solid**

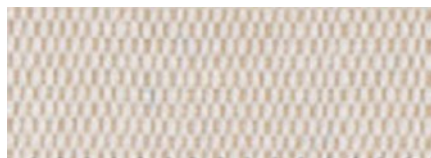


**782/14 Beige Classic Solid**



**15 White**

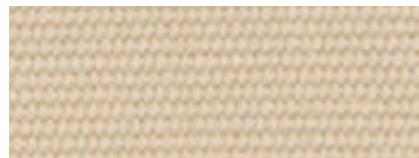




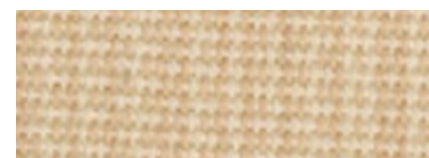
**15/14 Raw**



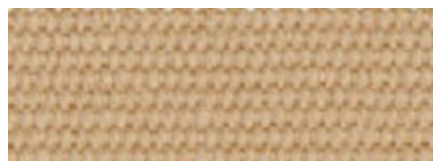
**4015/91 Raw Speckled**



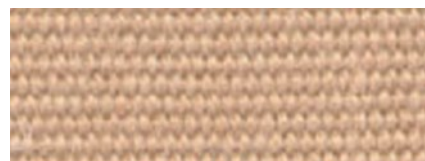
**15/1 Beige**



**4215/15 Textured Tan**



**52 Tan**



**14 Toast**



**12 Yellow**



**53 Pale Peach**



**1302 Sage Tweed**



**7 Moss Green**



**5 Forest Green**



**407/6 Green Tweed**



**8 Medium Green**



**13 Ocean Blue**



**407/13 Blue Tweed**



**75 Navy Blue**



**87 Fancy Blue**



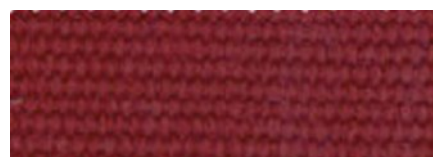
**79 Grey**



**407/79 Pepper Grey**



**15/79 Stone**



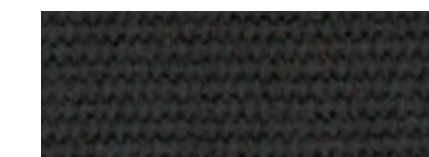
**84 Dark Terracotta**



**426 Terracotta**



**11 Red**



**81 True Brown**



**73 Burgundy**



**407/11 Burgundy Tweed**



**24 Black**



**5374 Smoke / Grey Stripe**



**5370 Beige / Grey**



**35 Red / White**



**33 Forest Green / White**



**37 Yellow / White**



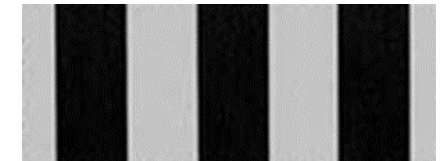
**47 Brown / Stone**



**969 Grey Fancy Stripe**



**242 Grey / White**



**68 Black / Grey**



**439 Dark Grey / White**



**809 Cream / Green**



**878 Beige / White Speckled**



**116/15 Medium Blue / White**



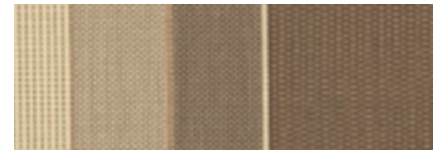
**931 Green / Cream Wide**



**5347/58 Grey Wheat Multi**



**5348/58 Beige / Wheat Multi**



**5349/930 Beige  
/ Brown Classic**



**636/14 Brown Elite Stripe**



**945/97 Beige Elite Stripe**



**946/58 Beige / Grey Classic**

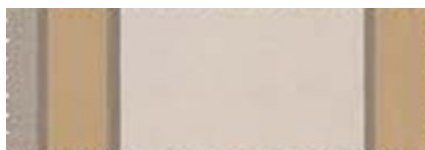


**947/14 Pale / Beige Classic**





**949/91 Brown / Beige Classic**



**959/14 Beige / Toast Elite**



**959/84 Beige / Brick Elite**



**5001/73 Burg/Grey Graduated**



**1101 Beige / Stripe Fancy**



**636/84 Terracotta Graduated**



**639/99 Tan / Natural Fancy**



**1120 Brown/ Beige Fancy**



**5009/1 Beige / Tan Stripe**



**5009/14 Brown / Tan Stripe**



**5011/57 Tan / Brown Fancy**



**5072/86 Brown/Stone Fancy**



**5144/14 Pastel/Natural Fancy**



**635/11 Cranberry/Natural F.**



**5011/11 Brick/Natural Fancy**



**5167/11 Red / Grey Fancy**



**5304/15 Rose / Grey Fancy**



**5173/12 Yellow / Grey Stripe**



**636/12 Yellow Graduated**



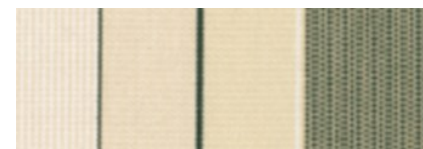
**5118/62 Yellow / White Fancy**



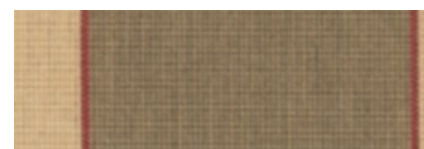
**5009/12 Gold / Tan Stripe**



**1150 Rust / Green Multi**



**5349/5 Natural/Green Classic**



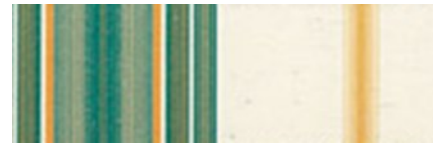
**5368/106 Toast/Grey / Rust**



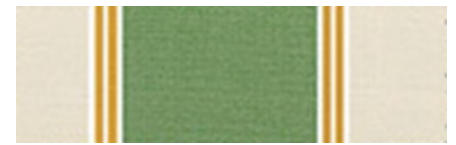
**940/5 Green Elite Stripe**



**764/62 Green / Tweed Fancy**



**774/62 Green / Speckled Fancy**



**739/701 Sage / Beige Fancy**



**634/97 Green / Tan Fancy**



**635/8 Green / Stone Fancy**



**636/5 Green / Beige Fancy**



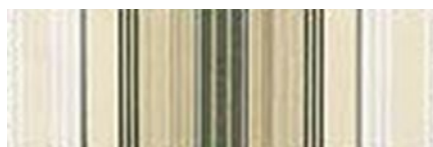
**638/5 Green Grey Fancy**



**5001/1 Green Graduated**



**5001/7 Moss Graduated**



**5011/7 Tan / Green Fancy**



**5071/7 Natural/Moss Graduated**



**5167/5 Green / Grey Fancy**



**484/3 Green / Yellow Fancy**



**948/21 Pale / Blue Classic**



**951/92 Grey / Navy Classic**



**769/75 Cream / Blue Fancy**



**5167/2 Blue / Grey Fancy**



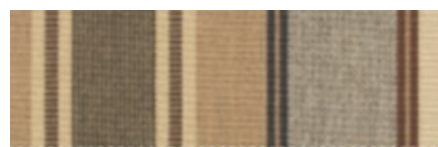
**636/10 Grey / Blue Graduated**



**641/10 Blue / Beige Fancy**



**5001/13 Blue Graduated**



**5348/14 Beige / Grey Multi**



**5348/79 Grey / Slate Multi**



**939/79 Yellow / Grey Elite**





**939/94 Grey Elite Stripe**



**950/24 Grey / Charcoal Classic**



**967/926 Grey/Charcoal Elite**



**634/51 Grey / Natural Fancy**



**633/79 Grey/ Black Fancy**



# Index Para / Tempotest Sunair Fabric collection

**SOLIDS • TWEEDS • BLOCK STRIPES • FANCY STRIPES • GRADUATED STRIPES**

Pattern	Description	Pattern	Description	Pattern	Description
101	Elite Toast	407/11	Burgundy Tweed	5118/62	Yellow/White Fancy
102	Cappuccino	24	Black	5009/12	Gold/Tan Stripe
106	Toffee	5374	Smoke / Grey Stripe	1150	Rust / Green Multi
986/15	Textured Lt. Grey	5370	Beige / Grey	5349/5	Natural / Green Classic
727/15	Textured Med. Grey	35	Red / White	5368/106	Toast / Grey / Rust
107	Textured Dk. Grey	33	Forest Green / White	940/5	Green Elite Stripe
986/106	Textured Beige	37	Yellow / White	764/62	Green /Tweed Fancy
873/2	Textured Cocoa	47	Brown / Stone	774/62	Green / Speckled Fancy
97/84	Plum	969	Grey Fancy Stripe	739/701	Sage / Beige Fancy
407/3	Green Classic Tweed	242	Grey / White	634/97	Green / Tan Fancy
407/16	Moss Classic Tweed	68	Black / Grey	635/8	Green / Stone Fancy
407/14	Toast Classic Tweed	439	Dark Grey / White	636/5	Green/ Beige Fancy
407/926	Grey Classic Tweed	809	Cream / Green	638/5	Green / Grey Fancy
926	Taupe Classic Solid	878	Beige / White Speckled	5001/1	Green Graduated
782/14	Beige Classic Solid	116/15	Medium Blue / White	5001/7	Moss Graduated
15	White	931	Green / Cream Wide	5011/7	Tan / Green Fancy
15/14	Raw	5347/58	Grey / Wheat Multi	5071/7	Natural / Moss Graduated
4015/91	Raw Speckled	5348/58	Beige / Wheat Multi	5167/5	Green / Grey Fancy
15/1	Beige	5349/930	Beige / Brown Classic	484/3	Green / Yellow Fancy
4215/15	Textured Tan	636/14	Brown Elite Stripe	948/21	Pale / Blue Classic
52	Tan	945/97	Beige Elite Stripe	951/92	Grey / Navy Classic
14	Toast	946/58	Beige / Grey Classic	769/75	Cream / Blue Fancy
12	Yellow	947/14	Pale / Beige Classic	5167/2	Blue / Grey Fancy
53	Pale Peach	949/91	Brown / Beige Classic	636/10	Grey / Blue Graduated
1302	Sage Tweed	959/14	Beige / Toast Elite	641/10	Blue / Beige Fancy
7	Moss Green	959/84	Beige / Brick Elite	5001/13	Blue Graduated
5	Forrest Green	5001/73	Burgundy / Grey Graduated	5348/14	Beige / Grey Multi
407/6	Green Tweed	1101	Beige / Stripe Fancy	5348/79	Grey / Slate Multi
8	Medium Green	636/84	Terracotta Graduated	939/79	Yellow / Grey Elite
13	Ocean Blue	639/99	Tan / Natural Fancy	939/94	Grey Elite Stripe
407/13	Blue Tweed	1120	Brown / Beige Fancy	950/24	Grey / Charcoal Classic
75	Navy Blue	5009/1	Beige / Tan Stripe	967/926	Grey / Charcoal Elite
87	Fancy Blue	5009/14	Brown / Tan Stripe	634/51	Grey / Natural Fancy
79	Grey	5011/57	Tan / Brown Fancy	633/79	Grey / Black Fancy
407/79	Pepper Grey	5072/86	Brown / Stone Fancy		
15/79	Stone	5144/14	Pastel / Natural Fancy		
84	Dark Terracotta	635/11	Cranberry / Natural Fancy		
426	Terracotta	5011/11	Brick / Natural Fancy		
11	Red	5167/11	Red / Grey Fancy		
81	True Brown	5304/15	Rose / Grey Fancy		
73	Burgundy	5173/12	Yellow / Grey Stripe		
		636/12	Yellow Graduated		





# MOTORIZATION & AUTOMATION



Awnings



Exterior Screens



Pergolas



Roller/Solar Shades

Sunair is proud to offer the full line of Somfy motors and controls for our awnings and screens program SOMFY RTS features motors with an integrated radio receiver that allows you to operate the awning by remote control with a wall mounted or hand held remote or by smart phone device. With a simple click of a button on your remote, the shade will lower or retract automatically. The manual override Sunea motor and Altus motor are both ideal for the SC2500 exterior screen. Each motor can be configured with a cord & plug which can simply be plugged into your patio outlet. They are available in 11', 17', & 23' lengths.



SUNEA™ CMO



ALTUS®



## AVAILABLE BATTERY OPERATED REMOTES



Telis 1 & 4 RTS  
Hand-held Remotes

Telis 16 RTS  
Hand-held Remote

**One (1) through (16) channel hand held or wall mounted remotes are available. Remotes are available in different colors to suit your style, please inquire.**

Telis hand-held remotes offer convenient and simple operation of every type of motorized application. Channels help organize the motorized products that are operated. Single channel remotes can operate one individual product or one group of motorized products. Multiple channel remotes can handle groups of motorized products.



Telis 1 Chronis  
RTS Timer



DecoFlex WireFree™ RTS  
Wall Switches



Telis 1 Patio for  
exterior use



Smoove® 1 RTS  
Surface Mount Wall Switch



# AVAILABLE SENSORS & CONTROLS



## **EOLIS 3D WIREFREE™ RTS**

### **Wind sensor for lateral Arm Awnings only**

The Eolis 3D WireFree™ RTS Wind Sensor is a wireless, battery powered wind sensor that will automatically retract an awning based on wind generated movements.



## **SOLIRIS RTS 24V KIT**

### **Sun & Wind Sensor**

The Soliris RTS Sun and Wind Sensor automatically controls your RTS motorized products based on current weather conditions.



## **ONDEIS® WIREFREE**

### **Sun & Rain Sensor**

The Rain Sensor is a solar-powered combined rain and sun sensor compatible with Radio Technology Somfy® motorized exterior products, including awnings and screens.

The Somfy myLink™ is a simple device that turns your smartphone or tablet into a sophisticated remote control for motorized products featuring Radio Technology Somfy®, allowing you to operate them whether you're home or not. Combine all the benefits of Somfy's RTS hand-held remotes and timers in a convenient app.



### **Sunis & ThermoSunis Indoor WireFree™ RTS Sensors**



# SOMFY MOTOR WIRING

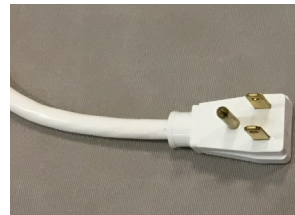


**Radio Technology Somfy**

Radio Technology Somfy® (RTS) allows wireless radio control of motorized applications via the RTS family of controls.

The three (3) wire cords can be wired in parallel and can be ordered with a molded plug to simply plug into an exterior UL approved GFI outlet. The standard four (4) wire cords must be wired with a traditional toggle wall switch. Screens can not be ordered with molded plugs on the end.

**Optional molded plug is available for "awning" motors only**



## Type of power cable

**RTS plug in capable motor cord**

**RTS**

**120V AC / 60Hz**

**3 conductor cable**



white = neutral

black = hot

green = ground

## All Somfy Motors are UL and CSA Recognized

- All SOMFY motors are UL Recognized and can be found under the following file numbers:

E60495, E60888, E63714



**Wired**

**120V AC / 60Hz**

**4 conductor cable**



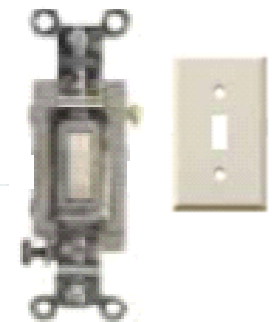
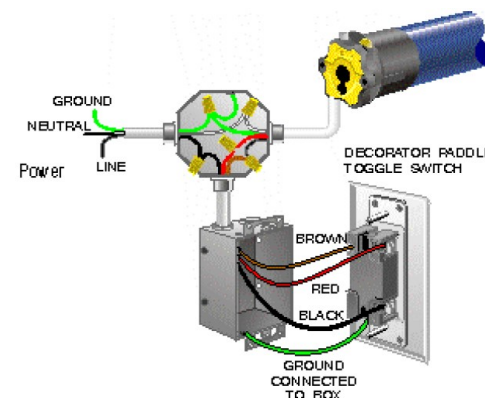
white = neutral

red = direction 1

black = direction 2

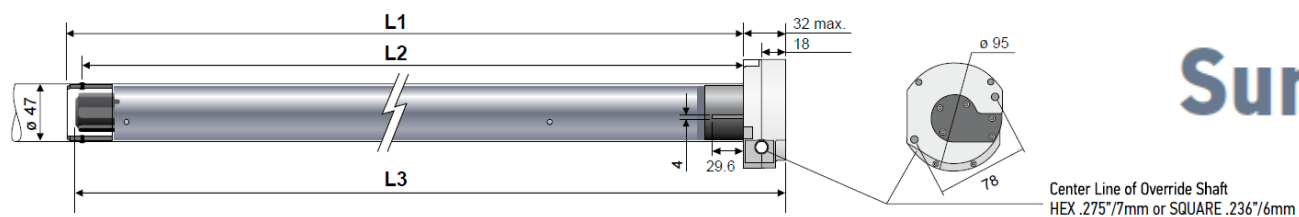
green = ground

**Hardwired motors with a wall switch**





## Dimensions



## Sunea® RTS CMO

### 525A2 CMO

25 Nm

120V / 60HZ

1.6A

20 rpm

### 535A2 CMO

35 Nm

120V / 60HZ

2.1A

20 rpm

### 550R2 CMO

50 Nm

120V / 60HZ

2.1A

14 rpm

### 660

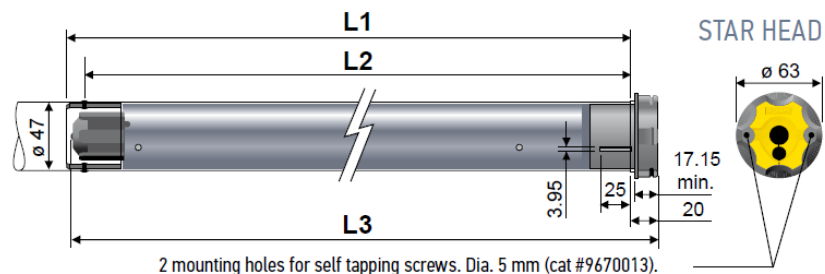
60 Nm (530 in. lbs.)

120V / 60Hz

2.5A

14 rpm

## Dimensions



## LT50 Altus® RTS

### 506

6 Nm

120V / 60HZ

1.1A

38 rpm

### 510

10 Nm

120V / 60HZ

1.3A

38 rpm

### 525

25 Nm

120V / 60HZ

1.6A

20 rpm

### 535

35 Nm

120V / 60HZ

2.1A

20 rpm

### 550

50 Nm

120V / 60HZ

2.1A

14 rpm

# ***MAESTRIA OSTACLE***

## ***DETECTION EXTERIOR EXTERIOR SCREEN MOTOR***

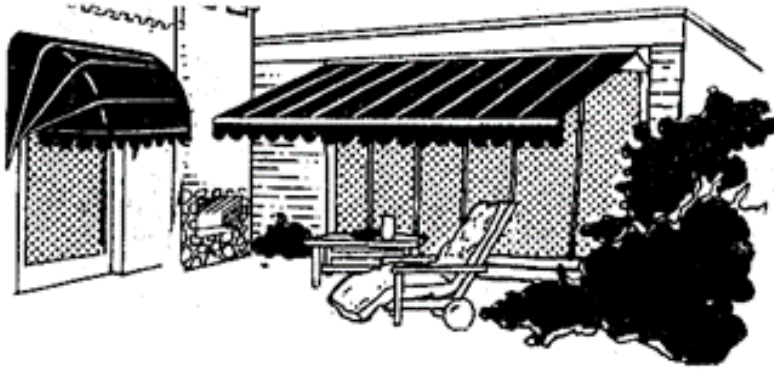


**The SOMFY Maestria obstacle detection motor is the recommended motor to be used for all zipper screens. These motors accurately detects obstacles, stopping after meeting an object traveling up or down. Protects carrier products and prevents fabric damage resulting from screen bunching and slipping from the guides. The motor senses and distinguishes between an actual obstacle and wind, even wind gusts, so it doesn't stop unnecessarily, resulting in fewer service calls and end user peace of mind.**



# Notes

**Note: Sunair® reserves the right to change engineering, specifications, and prices without notice.  
Images and Illustrations in the catalog may vary from digital and printed manuals.**



***SUNPROOFING AMERICA!***



#### **MARYLAND LOCATION**

Mailing: P.O. Box 1068  
Shipping: 7785 Rt. 175  
Jessup, MD 20794

Toll Free    800 - 548 - 0408  
Phone:       410 - 799 - 1145  
Fax:          410 - 799 - 5584

#### **ARIZONA LOCATION**

Mailing: Same as Jessup  
Shipping: 3807 West Thomas Rd.  
Phoenix, AZ 85017

Toll Free    877 - 272 - 3920  
Phone:       602 - 272 - 3920  
Fax:          602 - 272 - 3925

**[www.sunairawnings.com](http://www.sunairawnings.com)**

**[info@sunairawnings.com](mailto:info@sunairawnings.com)**