



# SC2000 MASTERSHADE®

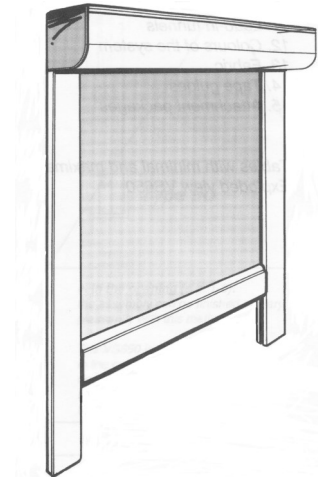
## Exterior Rolling Screen / small box

The SC2000 is our small box traditional exterior retractable vertical rolling screen system. The fabric runs inside vertical guide Tracks or Cable Guides by means of gravity. When the shade is retracted the fabric is stored in the built-in protective box. The weighted hem bar keeps the fabric taut. This Mastershade model is made of the highest quality extruded aluminum.

The SC2000 has a 4" x 4 1/4" Cassette box.

Type	Standard Frame Colors	Standard Widths	Standard Heights	Recommended Applications	Recommended Fabrics
Screen Exterior Retractable	9 standard Sunair colors	Through 14' 24' with split	Through 14' Depending on Fabric type	Residential & Commercial Windows,	Various Mesh & Acrylic Fabrics

- Small standard box or Waterfall configuration available.
- Capable of wider widths with fabric split.
- Gear or Motorized operation.
- Cabled or standard track available.
- Optional flange track available to cover fabric gap between track and fabric edge.



Revised : Dec 14, 2018

# BENEFITS OF SOLAR SCREENS



Screen fully lowered down



Screen partially lowered down

- **Reduces indoor temperatures and saves energy cooling your space.**
- **Cuts down on solar glare while retaining your view depending on mesh fabric type and openness factor.**
- **Cuts down on interior fading of floors, carpets and furniture.**
- **Can offer complete black out privacy blocking all light.**

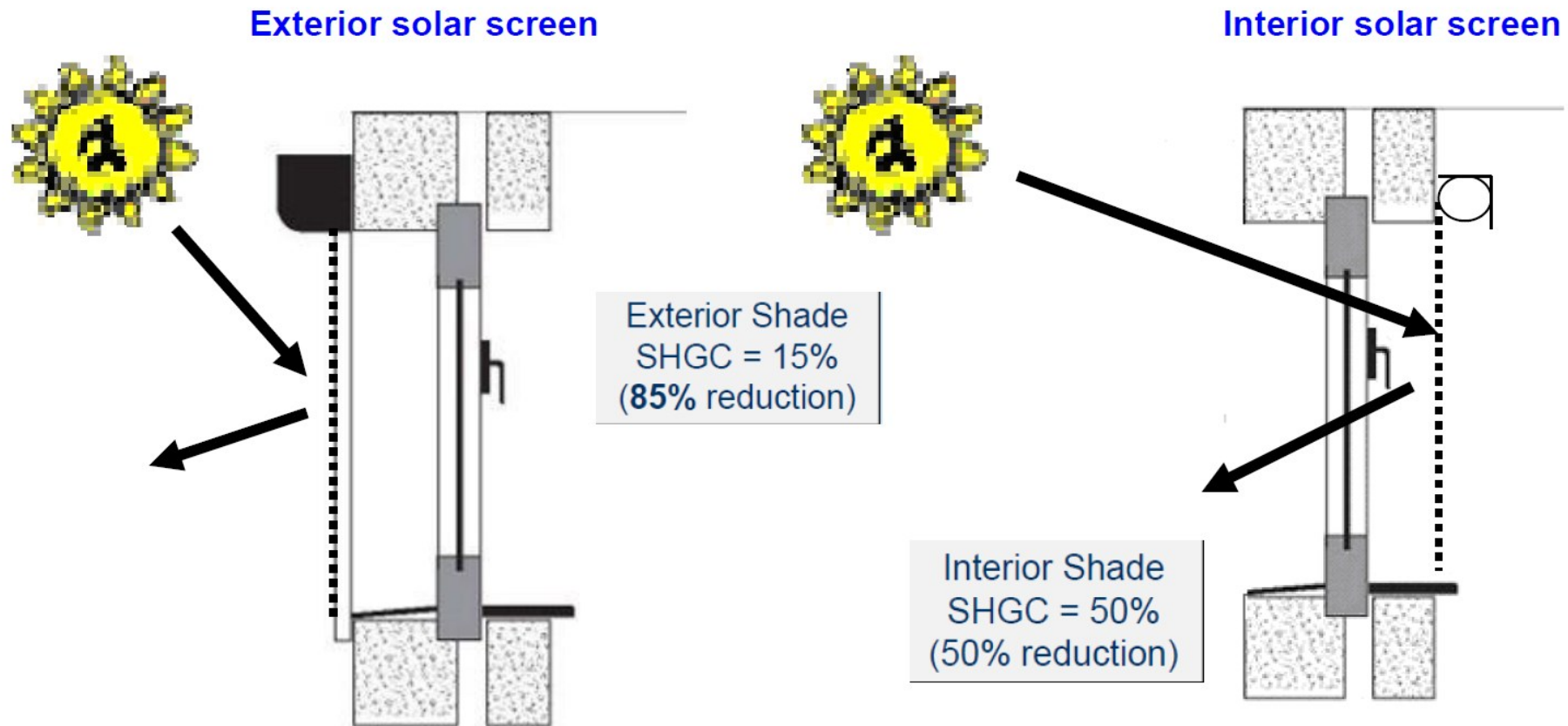


Screen partially down showing glare



Screen fully down and no glare

## BENEFITS OF SOLAR SCREENS cont:



Solar screens can be installed both on the exterior and interior applications of residential and commercial spaces. The benefit with exterior solar screens is that the fabric blocks the sun before it enters the home or space through the glass. Sometimes it is not feasible to install an exterior screen. In such a case, interior screens offer a good alternative. Interior screens are also more economical.

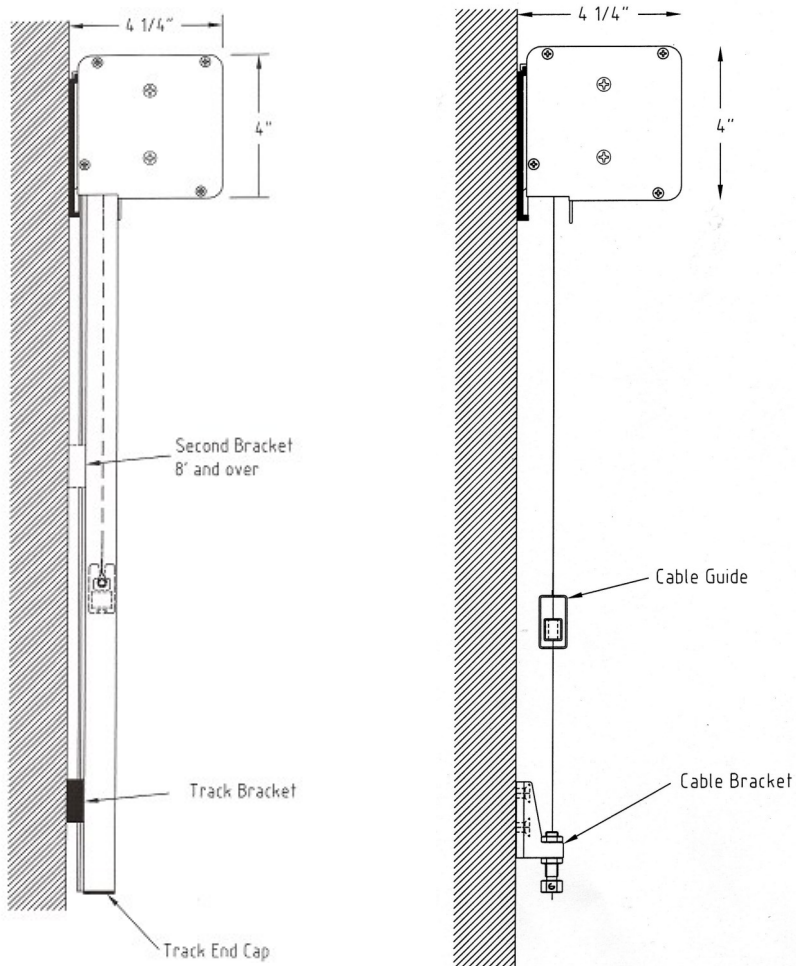


# SC2000 Mastershade® Installations



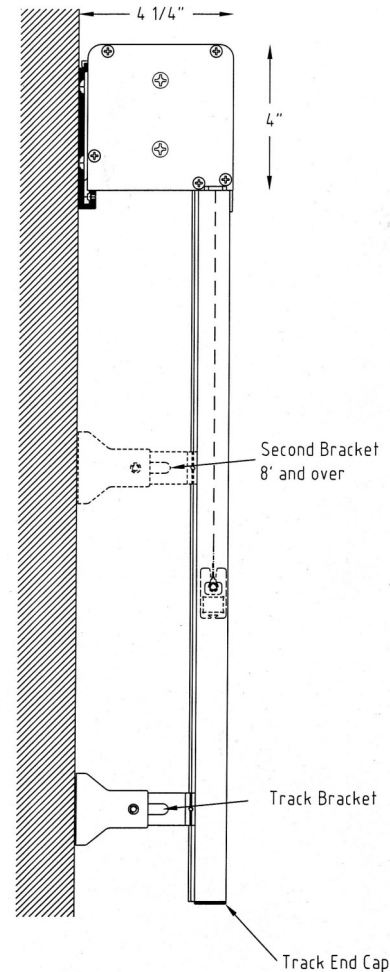
## SC2000 Standard Box

### With Standard Track and cable Guides



## SC2000 Waterfall Box

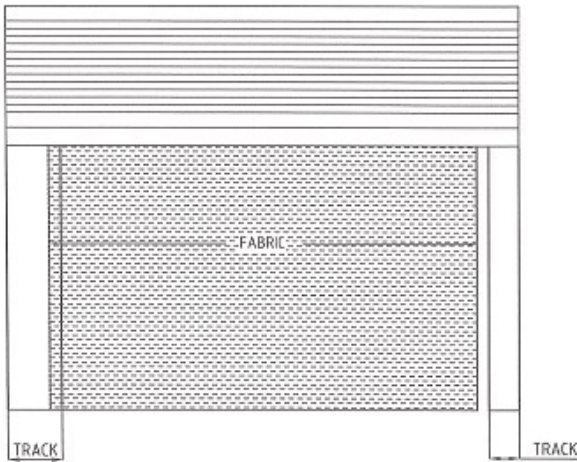
### With Standard Track



**STANDARD BOX** is available with both track and cable guides see above.

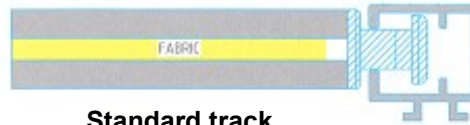
**WATERFALL BOX** is used on applications where there are door handles or a wall may not be flush like an uneven rock wall. Cable guides are not available. **NOTE:** Make sure you make the shade slightly wider for proper sun protection. The large gap between the fabric edge and glass area is much bigger than when using the standard box. Typically you will not use flange track with waterfall option.





**Flange Track**  
no/gap in fabric

**Standard Track**  
w/gap in fabric



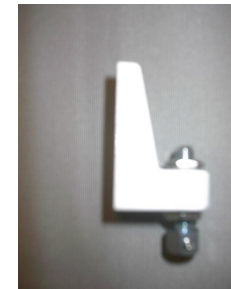
**Standard track**



**Flange track**



**Hem Bar**



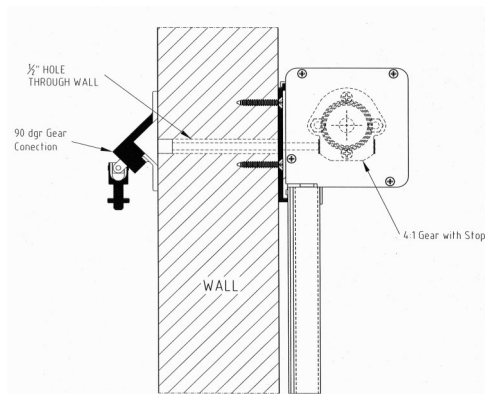
**Cable guide bracket**

## **SIZES FOR SC2000 Mastershade®**

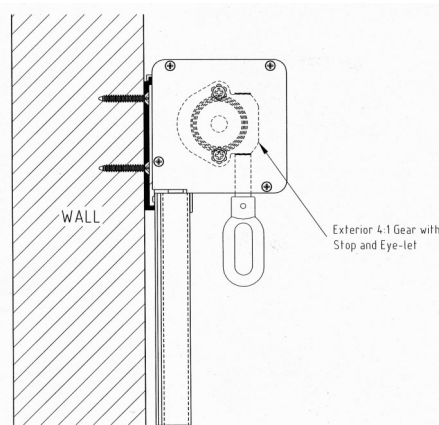
**Max width 14 ft. with single fabric**

**Max width 24 ft. with split fabric (2 ea. fabrics)**

**Max drop 9 & 14 ft. (Depending on fabric & size)**



**INSIDE  
GEAR  
STANDARD BOX**



**OUTSIDE  
GEAR  
STANDARD BOX**

### **GEAR OPERATION:**

Operate the shade with a standard hand crank (4:1 ratio gear) from the inside or outside.

### **MOTORIZED OPERATION:**

Use either a standard hardwire motor or RTS Altus remote motor.

**Minimum widths:** Standard motor 26"

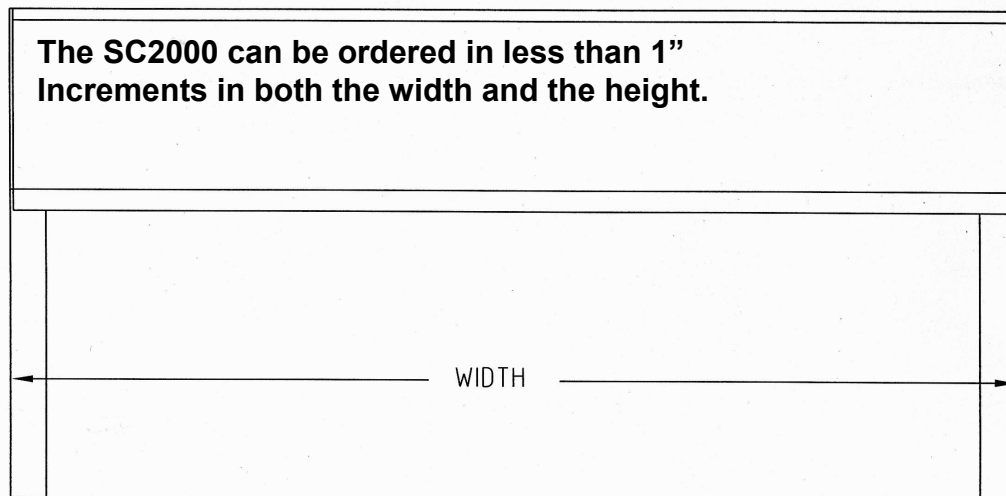
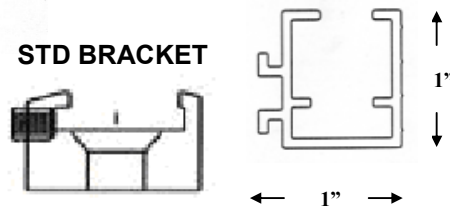
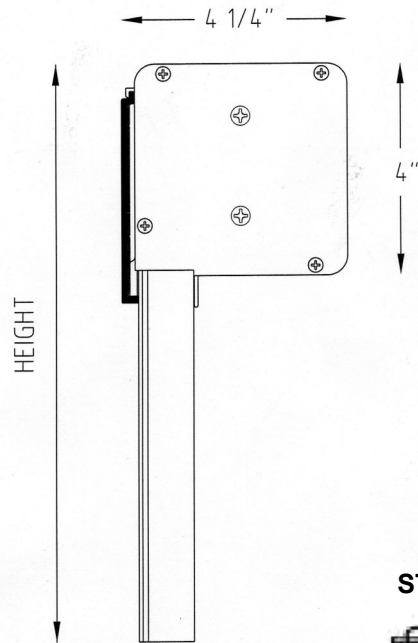
Altus motor 29"

**Note:** Manual CMO override is not available.

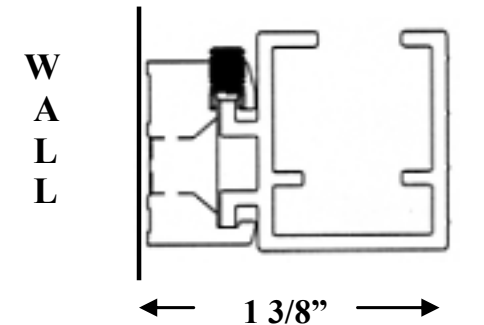
## MEASURING SC2000:

**Width:** Determine the desired width. The width you order must be the measurement outside of track to outside of track. If possible, add 1 1/2" on each side for proper window coverage by the fabric. There will be a small 3/8" gap between the fabric edge and the track on each side unless you use Flange track which overlaps the fabric gap. If using cable guides instead of track, allow roughly 1 1/2" less fabric on each side. Adjust the width of the cassette accordingly to cover the opening regardless if using track or cables.

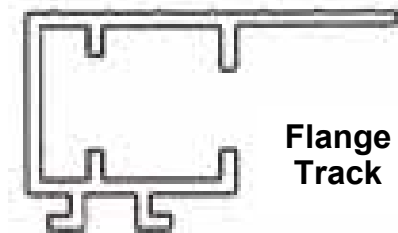
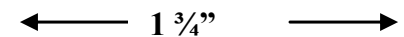
**Height:** Determine the height of the window or opening. The fabric or screen should cover the height of the window. The height of the delivered screen includes the cassette height of 4". To calculate the height of the shade, add the height of the cassette (4") and the hem bar (2") to the total height of the window measurement (See illustration to the Left). Note: Pay attention to casement windows that will interfere with the hem bar when the shade is retracted (In such a case, mount the top of the cassette 6" above the opening window edge). In addition, if the hem bar needs to go below the glass area as not to be seen through the glass when the shade is lowered, add another 2" to the height, for a total of 8" (Glass height plus 8").



STANDARD TRACK SC2000



Height with  
hem bar in  
retracted  
position

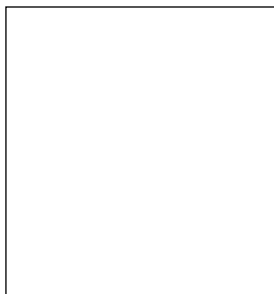


FLANGE Track SC2000

# FRAME COLORS ( STANDARD)

## *Awnings & Screens\**

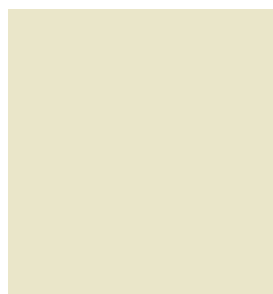
\*Note: See each model technical page for available frame colors.



**WHITE Gloss**  
Ral 9016



**MOCHA**  
Semi Gloss



**CREAM Gloss**  
Ral 1013



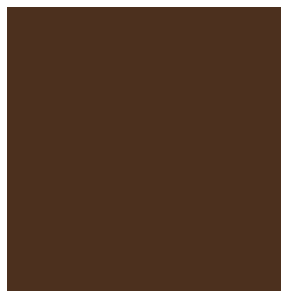
**BLACK Gloss**  
Ral 9005



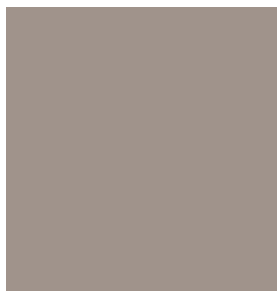
**BRONZE**  
Coarse



**GREY Gloss**  
Ral 7040



**BROWN Gloss**  
Ral 8019

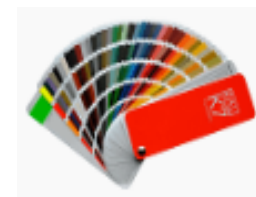


**TAUPE Gloss**  
Ral 7030



**GREEN Gloss**  
Ral 6005

### OPTIONAL



**FULL RAL COLOR  
RANGE / EXTRA COST**

**NOTE:** ACTUAL FRAME COLOR MAY VARY FROM DIGITAL IMAGES





RecScreen  
5000P

Exterior Screen Fabric



300 Charcoal / Charcoal

## Specifications

---

**Composition:** 15% Polyester, 85% Vinyl

**Syle:** Basket Weave

**Mesh Weight:** 14,75 (oz/yd<sup>2</sup>)

**Openness Factor:** 5.5 %

**Fabric Thickness (in):** .026

**Width:** 118"

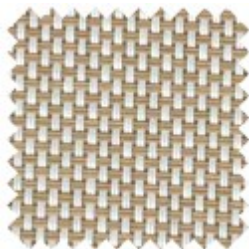
**Fire classification:** NFPA 701 Test 1, and CA Fire Marshall Title 19, Section 1237.1

**Warranty:** 5 years exterior

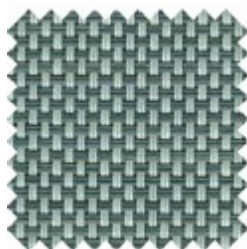
**Bacteria and Fungal Resistance:** AATCC Test Method 100-2004



001 White  
/ Linen



002 Blanco  
/ Sable



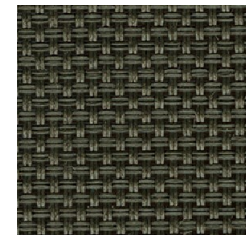
405 Pearl  
/ Dark Grey



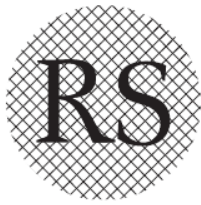
305 Charcoal  
/ Dark Grey



307 Charcoal  
/ Bronze



770 Bronze  
/ Bronze



RecScreen  
6000P

Exterior Screen Fabric



300 Charcoal / Charcoal

## Specifications

**Composition:** 18% Polyester, 82% Vinyl

**Style:** Twill

**Mesh Weight:** 17,8 (oz/yd<sup>2</sup>)

**Openness Factor:** 3 %

**Fabric Thickness (in):** .78 mm

**Width:** 118"

**Fire classification:** NFPA 701 Test 1, and CA Fire Marshall Title 19, Section 1237.1

**Warranty:** 10 Year Limited. Visit [www.recasensusa.com](http://www.recasensusa.com) for full warranty.

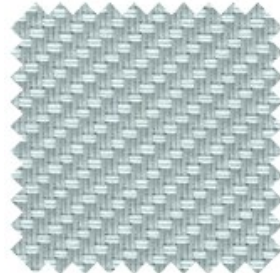
**Bacteria and Fungal Resistance:** AATCC Test Method 100-2004



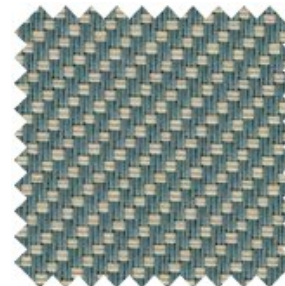
001 White  
/ Linen



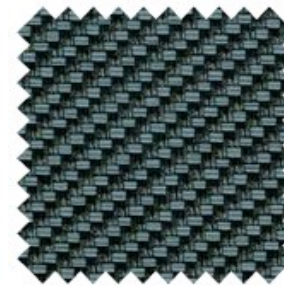
002 White  
/ Sable



004 White  
/ Pearl Grey



502 Dark  
Gray / Sable



503 Dark  
Gray / Charcoal



307 Charcoal  
/ Bronze

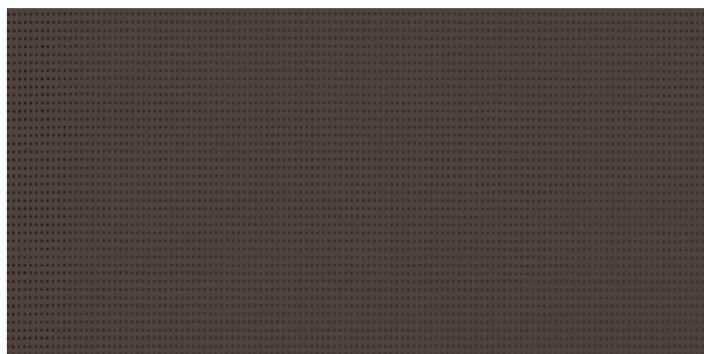


**Soltis**  
Horizon 86

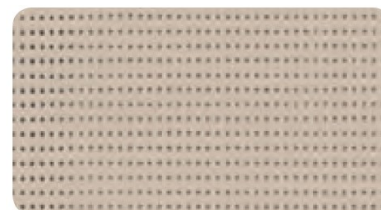
**Serge Ferrari**

14 % Open Screen Mesh

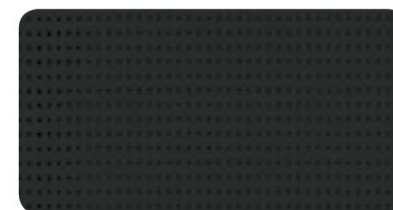
Exterior Screen Fabric



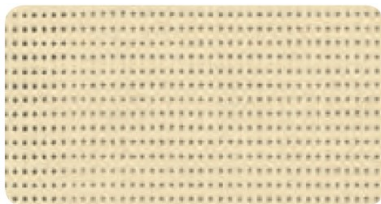
86-2043  
Bronze



86 – 2135  
Sandy Beige



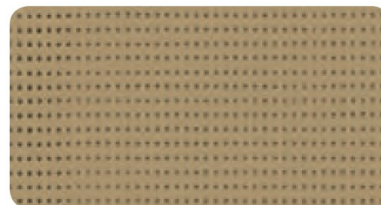
86 – 2053  
Black



86 – 2175  
Champagne



86 – 2044  
White



86 – 2012  
Pepper



86 – 2171  
Boulder

■ **Technical properties**

Openess factor	14%
Weight	380 g/m <sup>2</sup> — 11.2 oz/sqyd
Thickness	0.45 mm — 450 microns
Width	177 cm - 267 cm — 69.7 in. - 105.1 in.

Superior elongation and tear resistance

No deformation during processing and use

Superior aesthetic and mechanical durability

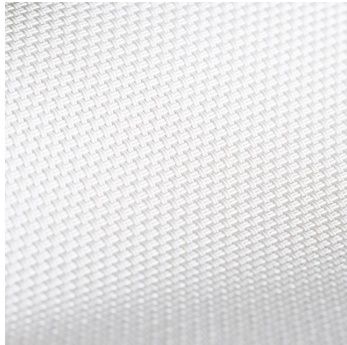
Smooth finish easy to clean, space saving, easy rolling



## Exterior Screen Fabric



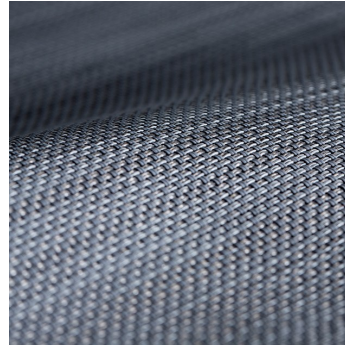
5 % Open Screen Mesh



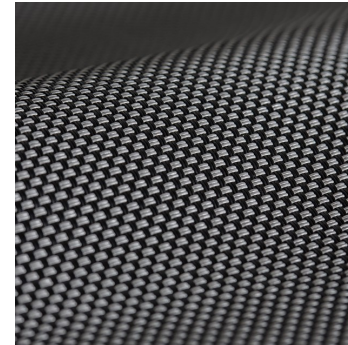
White



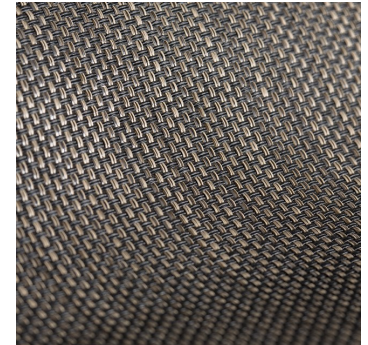
Stone Texture



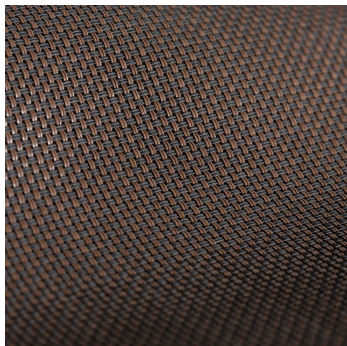
ShadowTexture



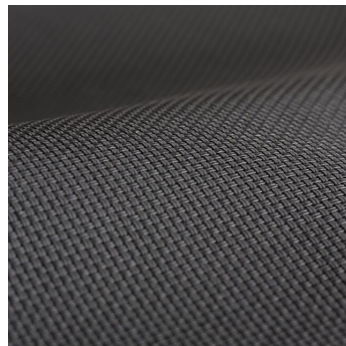
Granite



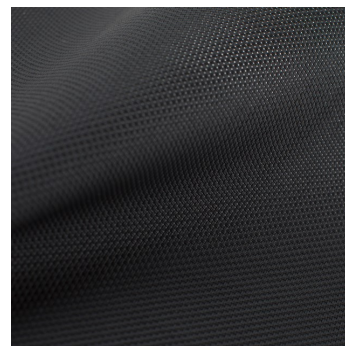
Expresso Texture



Tobacco



Charcoal



Flat Black



Bone

TEXTILENE® nano™ 95 is a durable, yet lightweight synthetic fabric. It is lighter and finer with the same technical qualities as the original TEXTILENE®. TEXTILENE® nano™95 is excellent for exterior use and can reduce energy costs while blocking up to 95% of the sun's harmful rays.







**TEMPOTEST®**  
ITALIAN PERFORMANCE FABRICS



**2018**

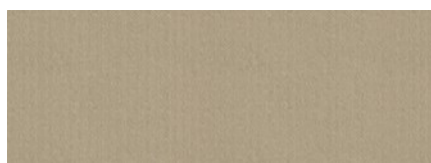
## ACRYLIC FABRIC COLLECTION



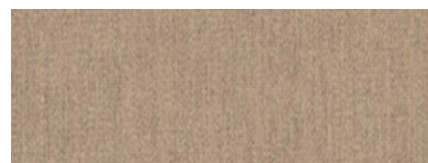
Fabric covers sewn with Tenara thread.



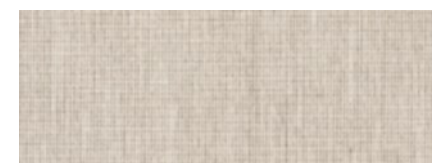
**101 Elite Toast**



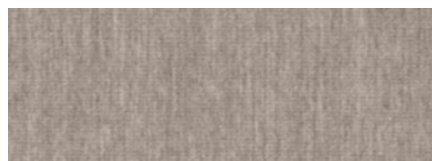
**102 Cappuccino**



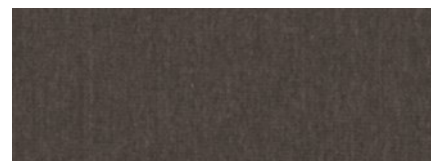
**106 Toffee**



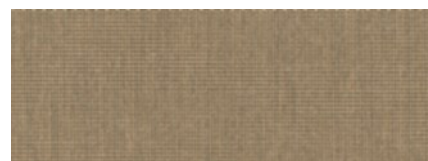
**986/15 Textured Lt. Grey**



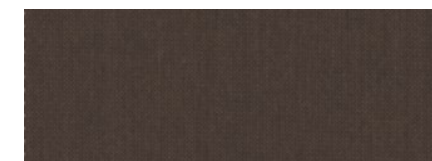
**727/15 Textured Med. Grey**



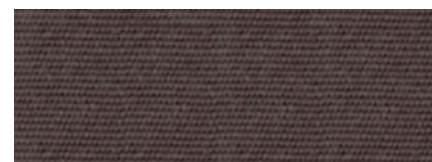
**107 Textured Dk. Grey**



**986/106 Textured Beige**



**873/2 Textured Cocoa**



**97/84 Plum**



**407/3 Green Classic Tweed**



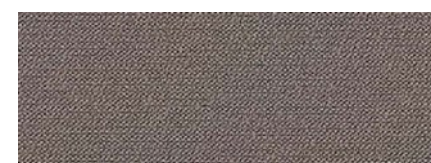
**407/16 Moss Classic Tweed**



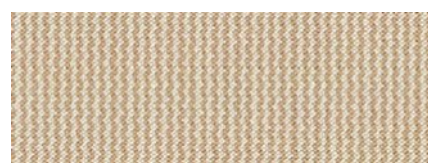
**407/14 Toast Classic Tweed**



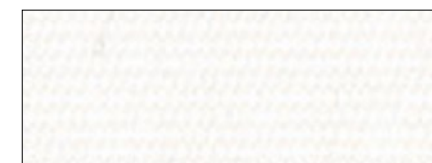
**407/926 Grey Classic Tweed**



**926 Taupe Classic Solid**

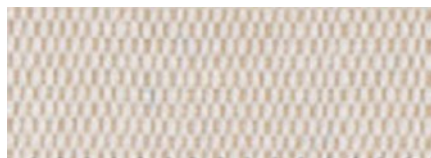


**782/14 Beige Classic Solid**



**15 White**

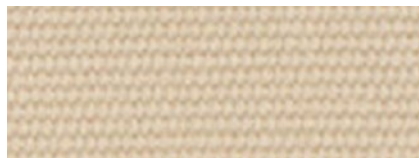




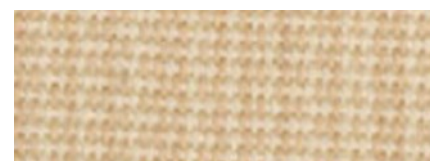
**15/14 Raw**



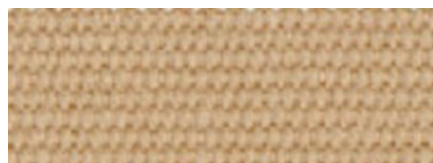
**4015/91 Raw Speckled**



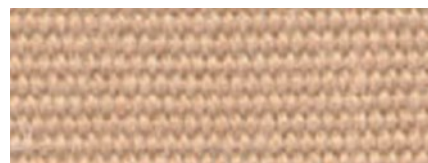
**15/1 Beige**



**4215/15 Textured Tan**



**52 Tan**



**14 Toast**



**12 Yellow**



**53 Pale Peach**



**1302 Sage Tweed**



**7 Moss Green**



**5 Forest Green**



**407/6 Green Tweed**



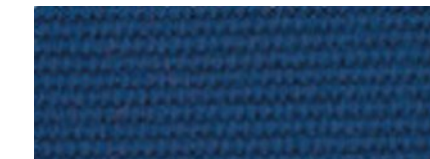
**8 Medium Green**



**13 Ocean Blue**



**407/13 Blue Tweed**



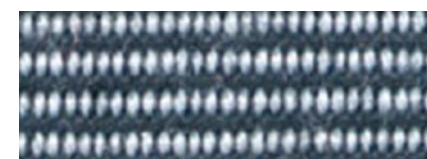
**75 Navy Blue**



**87 Fancy Blue**



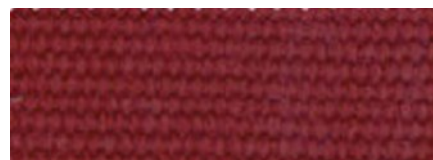
**79 Grey**



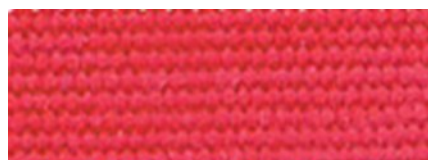
**407/79 Pepper Grey**



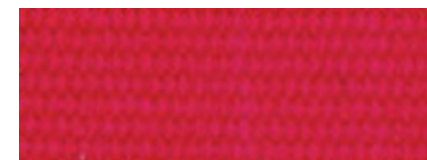
**15/79 Stone**



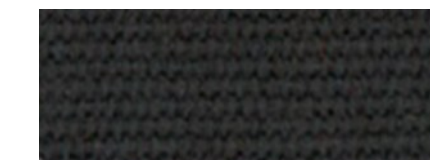
**84 Dark Terracotta**



**426 Terracotta**



**11 Red**



**81 True Brown**





**73 Burgundy**



**407/11 Burgundy Tweed**



**24 Black**



**5374 Smoke / Grey Stripe**



**5370 Beige / Grey**



**35 Red / White**



**33 Forest Green / White**



**37 Yellow / White**



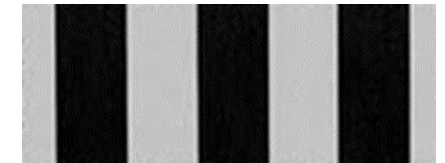
**47 Brown / Stone**



**969 Grey Fancy Stripe**



**242 Grey / White**



**68 Black / Grey**



**439 Dark Grey / White**



**809 Cream / Green**



**878 Beige / White Speckled**



**116/15 Medium Blue / White**



**931 Green / Cream Wide**



**5347/58 Grey Wheat Multi**



**5348/58 Beige / Wheat Multi**



**5349/930 Beige  
/ Brown Classic**



**636/14 Brown Elite Stripe**



**945/97 Beige Elite Stripe**



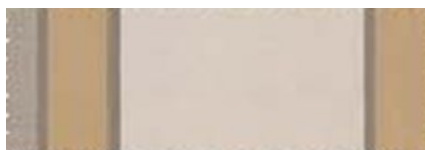
**946/58 Beige / Grey Classic**



**947/14 Pale / Beige Classic**



**949/91 Brown / Beige Classic**



**959/14 Beige / Toast Elite**



**959/84 Beige / Brick Elite**



**5001/73 Burg/Grey Graduated**



**1101 Beige / Stripe Fancy**



**636/84 Terracotta Graduated**



**639/99 Tan / Natural Fancy**



**1120 Brown/ Beige Fancy**



**5009/1 Beige / Tan Stripe**



**5009/14 Brown / Tan Stripe**



**5011/57 Tan / Brown Fancy**



**5072/86 Brown/Stone Fancy**



**5144/14 Pastel/Natural Fancy**



**635/11 Cranberry/Natural F.**



**5011/11 Brick/Natural Fancy**



**5167/11 Red / Grey Fancy**



**5304/15 Rose / Grey Fancy**



**5173/12 Yellow / Grey Stripe**



**636/12 Yellow Graduated**



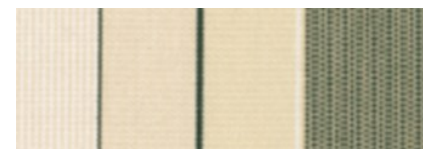
**5118/62 Yellow / White Fancy**



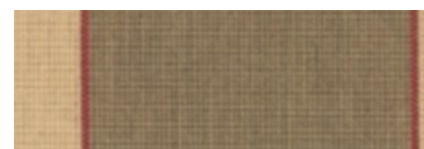
**5009/12 Gold / Tan Stripe**



**1150 Rust / Green Multi**



**5349/5 Natural/Green Classic**



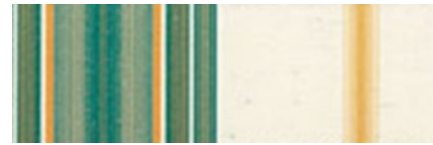
**5368/106 Toast/Grey / Rust**



**940/5 Green Elite Stripe**



**764/62 Green / Tweed Fancy**



**774/62 Green / Speckled Fancy**



**739/701 Sage / Beige Fancy**



**634/97 Green / Tan Fancy**



**635/8 Green / Stone Fancy**



**636/5 Green / Beige Fancy**



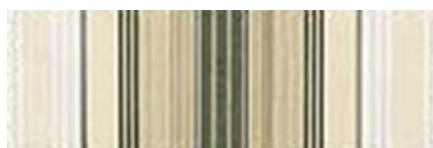
**638/5 Green Grey Fancy**



**5001/1 Green Graduated**



**5001/7 Moss Graduated**



**5011/7 Tan / Green Fancy**



**5071/7 Natural/Moss Graduated**



**5167/5 Green / Grey Fancy**



**484/3 Green / Yellow Fancy**



**948/21 Pale / Blue Classic**



**951/92 Grey / Navy Classic**



**769/75 Cream / Blue Fancy**



**5167/2 Blue / Grey Fancy**



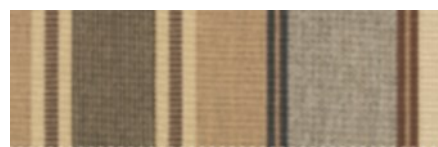
**636/10 Grey / Blue Graduated**



**641/10 Blue / Beige Fancy**



**5001/13 Blue Graduated**



**5348/14 Beige / Grey Multi**



**5348/79 Grey / Slate Multi**



**939/79 Yellow / Grey Elite**





**939/94 Grey Elite Stripe**



**950/24 Grey / Charcoal Classic**



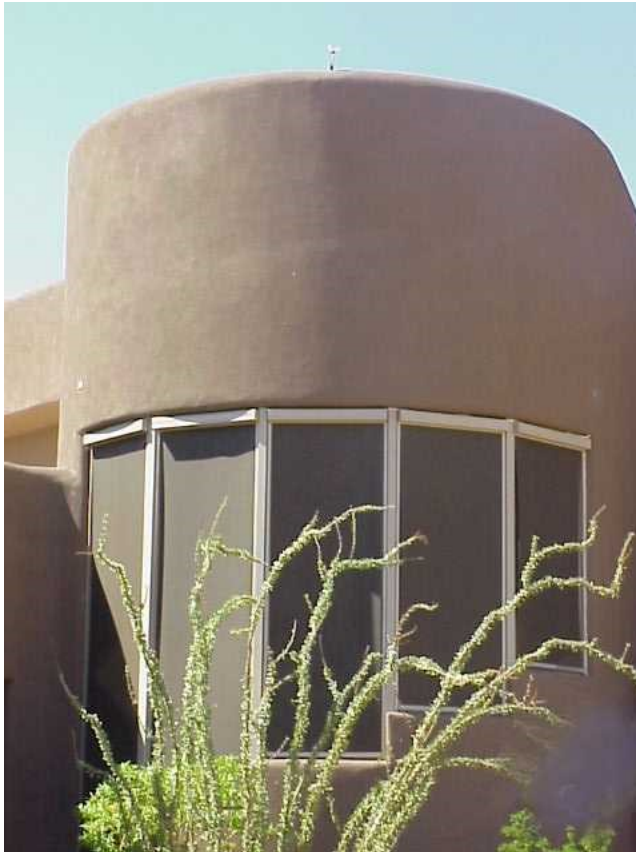
**967/926 Grey/Charcoal Elite**



**634/51 Grey / Natural Fancy**



**633/79 Grey/ Black Fancy**



# MOTORIZATION & AUTOMATION



Awnings



Exterior Screens



Pergolas



Roller/Solar Shades

Sunair is proud to offer the full line of Somfy motors and controls for our awnings and screens program SOMFY RTS features motors with an integrated radio receiver that allows you to operate the awning by remote control with a wall mounted or hand held remote or by smart phone device. With a simple click of a button on your remote, the shade will lower and retract automatically. The Altus motors is ideal for exterior screens.



ALTUS®



## AVAILABLE BATTERY OPERATED REMOTES



Telis 1 & 4 RTS  
Hand-held Remotes



Telis 16 RTS  
Hand-held Remote

**One (1) through (16) channel hand held or wall mounted remotes are available. Remotes are available in different colors to suit your style, please inquire.**

Telis hand-held remotes offer convenient and simple operation of every type of motorized application. Channels help organize the motorized products that are operated. Single channel remotes can operate one individual product or one group of motorized products. Multiple channel remotes can handle groups of motorized products.



Telis 1 Chronis  
RTS Timer



DecoFlex WireFree™ RTS  
Wall Switches



Telis 1 Patio for  
exterior use



Smoove® 1 RTS  
Surface Mount Wall Switch



# AVAILABLE SENSORS & CONTROLS



**EOLIS 3D WIREFREE™ RTS**

**Wind sensor for lateral  
Arm Awnings only**

The Eolis 3D WireFree™ RTS Wind Sensor is a wireless, battery powered wind sensor that will automatically retract an awning based on wind generated movements.



**SOLIRIS RTS 24V KIT**

**Sun & Wind Sensor**

The Soliris RTS Sun and Wind Sensor automatically controls your RTS motorized products based on current weather conditions.



**ONDEIS® WIREFREE**

**Sun & Rain Sensor**

The Rain Sensor is a solar-powered combined rain and sun sensor compatible with Radio Technology Somfy® motorized exterior products, including awnings and screens.

The Somfy myLink™ is a simple device that turns your smartphone or tablet into a sophisticated remote control for motorized products featuring Radio Technology Somfy®, allowing you to operate them whether you're home or not. Combine all the benefits of Somfy's RTS hand-held remotes and timers in a convenient app.



**Sunis & ThermoSunis  
Indoor WireFree™ RTS Sensors**



# SOMFY MOTOR WIRING



**Radio Technology Somfy**

Radio Technology Somfy® (RTS) allows wireless radio control of motorized applications via the RTS family of controls.

The three (3) wire Altus motor cords with RTS radio can be wired in parallel. The standard four (4) wire cords must be wired with a traditional toggle wall switch. Screens can not be ordered with molded plugs on the end.

## All Somfy Motors are UL and CSA Recognized

- All SOMFY motors are UL Recognized and can be found under the following file numbers:

E60495, E60888, E63714



## Type of power cable

**RTS**  
**120V AC / 60Hz**  
**3 conductor cable**



white = neutral  
black = hot  
green = ground

## Type of power cable

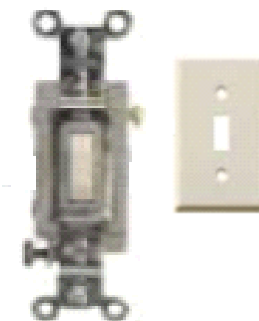
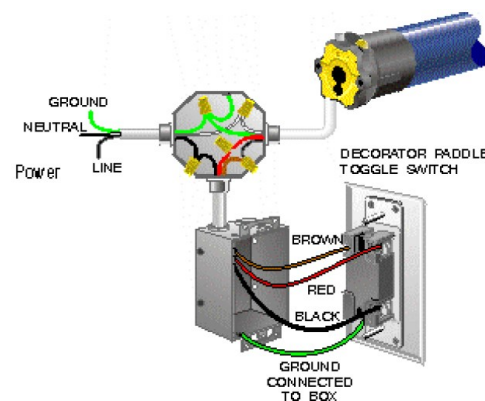
Hardwire motor cord

**Wired**  
**120V AC / 60Hz**  
**4 conductor cable**

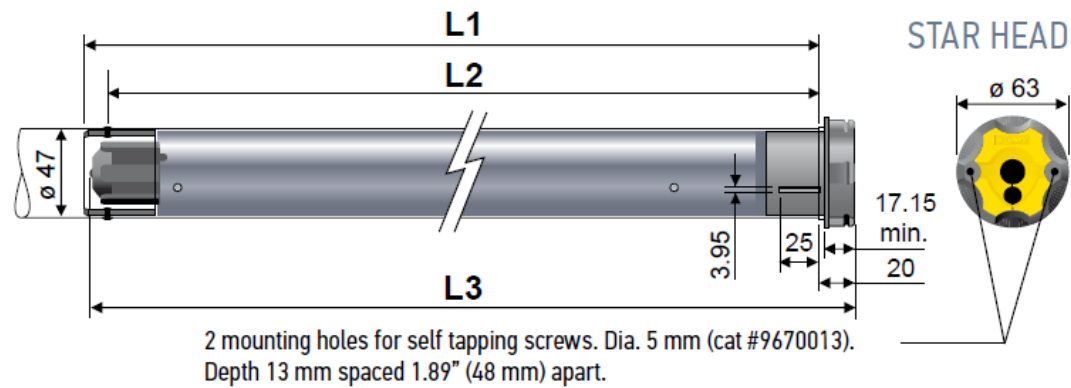


white = neutral  
red = direction 1  
black = direction 2  
green = ground

**Hardwired motors with a wall switch**



## Dimensions

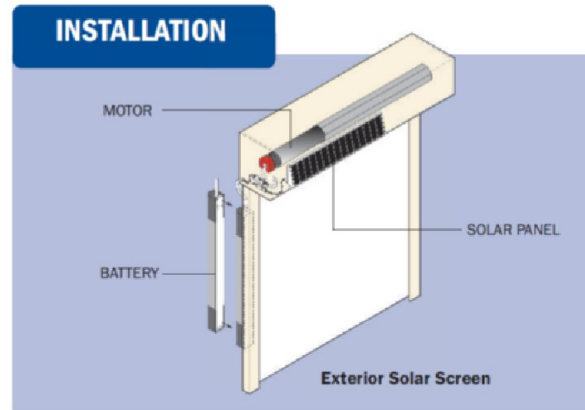


## LT50 Altus® RTS

506	510	525	535	550
6 Nm	10 Nm	25 Nm	35 Nm	50 Nm
120V / 60HZ	120V / 60HZ	120V / 60HZ	120V / 60HZ	120V / 60HZ
1.1A	1.3A	1.6A	2.1A	2.1A
38 rpm	38 rpm	20 rpm	20 rpm	14 rpm



# *Autosun solar powered motor for screens*



The Simu solar powered motor can be utilized with smaller sized exterior solar screens. The available screen models are the SC2000, SC3000, and SC4000 models with standard track or cables up to 14 ft. wide (Please see your Sunair dealer for options and limitations). This battery powered motor does not require a hardwiring or an electrician. The motor kit comes with a solar panel and can be ordered optional with a rechargeable battery pack. You must add a hand held remote to operate.

**A COMPLETE SOLAR POWERED SYSTEM**



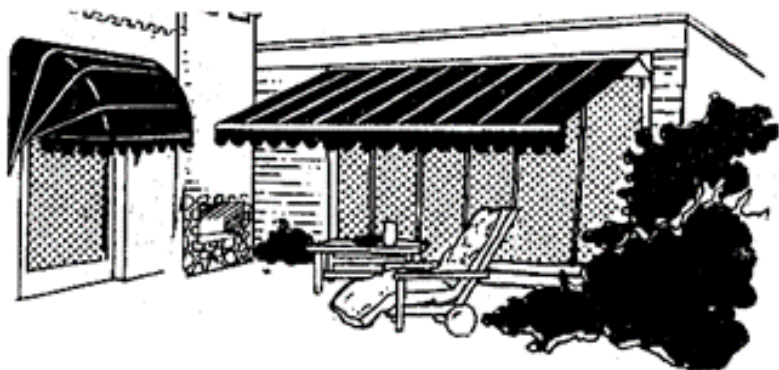
- AutoSun™ DC Hz motor**
  - AutoSun™ electric motor, dia. 40mm, 12V
  - Compatible with existing Hz transmitters
- AutoSun™ battery**
  - NiMH technology
  - Lead-free
  - Operating Temperature is -4° F to +158° F
  - Separate programming button
- AutoSun™ solar panel**
  - Amorphous Silicon technology
  - Works effectively even in overcast conditions

**SOLAR POWER**



# Notes

**Note: Sunair® reserves the right to change engineering, specifications, and prices without notice.  
Images and Illustrations in the catalog may vary from digital and printed manuals.**



***SUNPROOFING AMERICA!***



#### **MARYLAND LOCATION**

Mailing: P.O. Box 1068  
Shipping: 7785 Rt. 175  
Jessup, MD 20794

Toll Free    800 - 548 - 0408  
Phone:       410 - 799 - 1145  
Fax:          410 - 799 - 5584

#### **ARIZONA LOCATION**

Mailing: Same as Jessup  
Shipping: 3807 West Thomas Rd.  
Phoenix, AZ 85017

Toll Free    877 - 272 - 3920  
Phone:       602 - 272 - 3920  
Fax:          602 - 272 - 3925

**[www.sunairawnings.com](http://www.sunairawnings.com)**

**[info@sunairawnings.com](mailto:info@sunairawnings.com)**