



## ISC6000 Interior shades

The ISC6000 is a vertical rolling interior shade system. The 6000 shade is operated by a manual chain drive as standard with optional motorized operation. Motorized control is an option with either a ultra quiet Sonesse 30 battery operated radio controlled motor or 404 Sonesse RTS Altus motor. Available with an optional fascia covering of 3" & 4" depending on height of the screen.

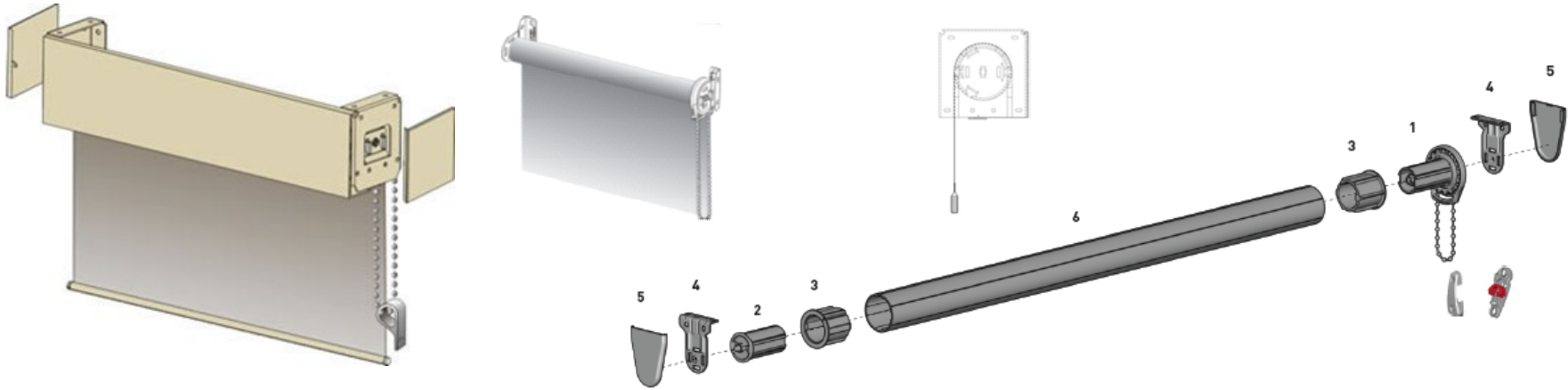
Type	Standard Frame Colors	Standard Widths	Standard Heights	Recommended Applications	Recommended Fabrics
ISC6000	White, Anodized Silver & Black, Bronze, Vanilla	Up to 11' 10' max chain	Up to 14' Dependent on fabric	Residential & Commercial Windows	Mermet E screen & Avila  Other fabrics special order

- The R screen is the original Rollease clutch system. With 3" or 4" straight fascia.
- Minimal light gaps.
- Ideal for both residential and commercial applications.
- Chain operated or optional motorized operation.
- Available with Sonesse 30 Ultra quiet RTS Battery motor operation or 404 Altus hardwire Motors.



# ISC6000 Interior screen

## STANDARD CHAIN OPERATED SHADE



### OPTIONAL FASCIA:

Max screen height 3" Fascia is 8 ft.  
Max screen height 4" Fascia is 14 ft.

### OPERATION:

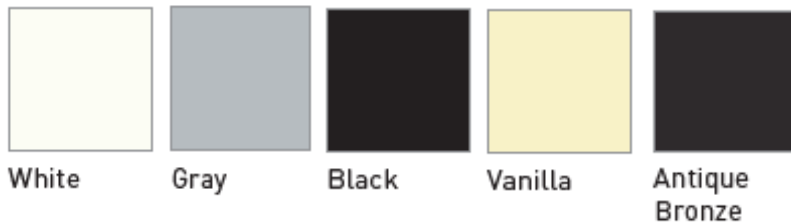
Standard chain operated.  
Optional: Somfy Altus 404 motor &  
Sonesse battery motor.

### CHAIN COLORS:

PLASTIC: Brown, White

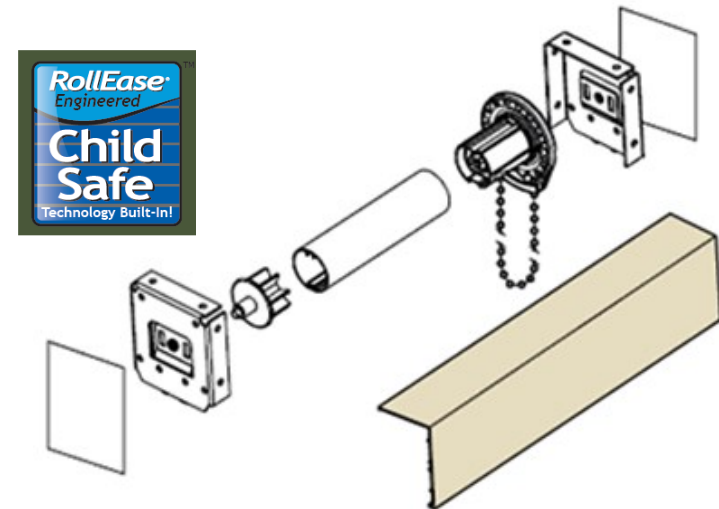
METAL: Nickel Plated Optional Stainless & Copper

### AVAILABLE FASCIA COLORS



Standard hem bar  
welded into fabric

## OPTIONAL SQUARE 3" & 4" FASCIA

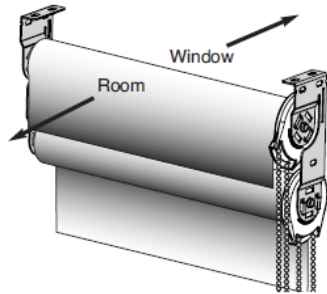


**SafetyHold3™**  
Bead Chain or Cord Loop Tension Device

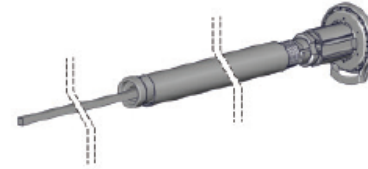
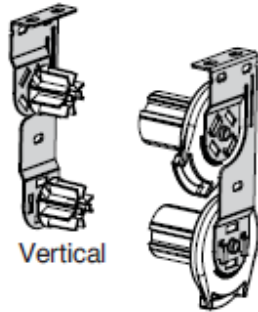
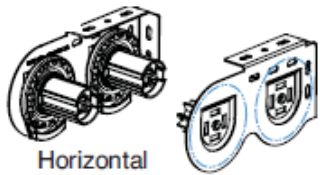


# OPTIONAL:

Please inquire with Sunair Office for a special quote.



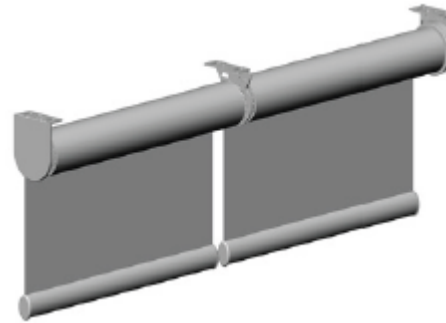
**DUO SHADE**



**SPRING ASSIST**



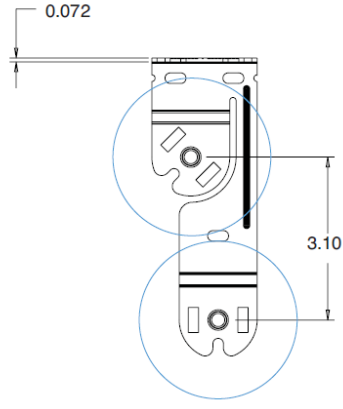
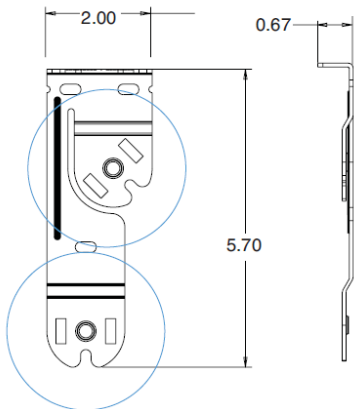
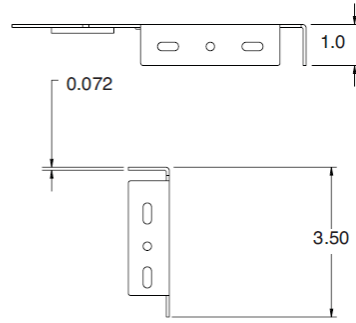
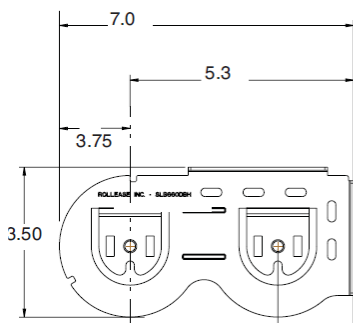
**BLACK OUT TRACKS**



**JOINED SHADES**



**ROUND COVER**





## ISC7000 Interior shades

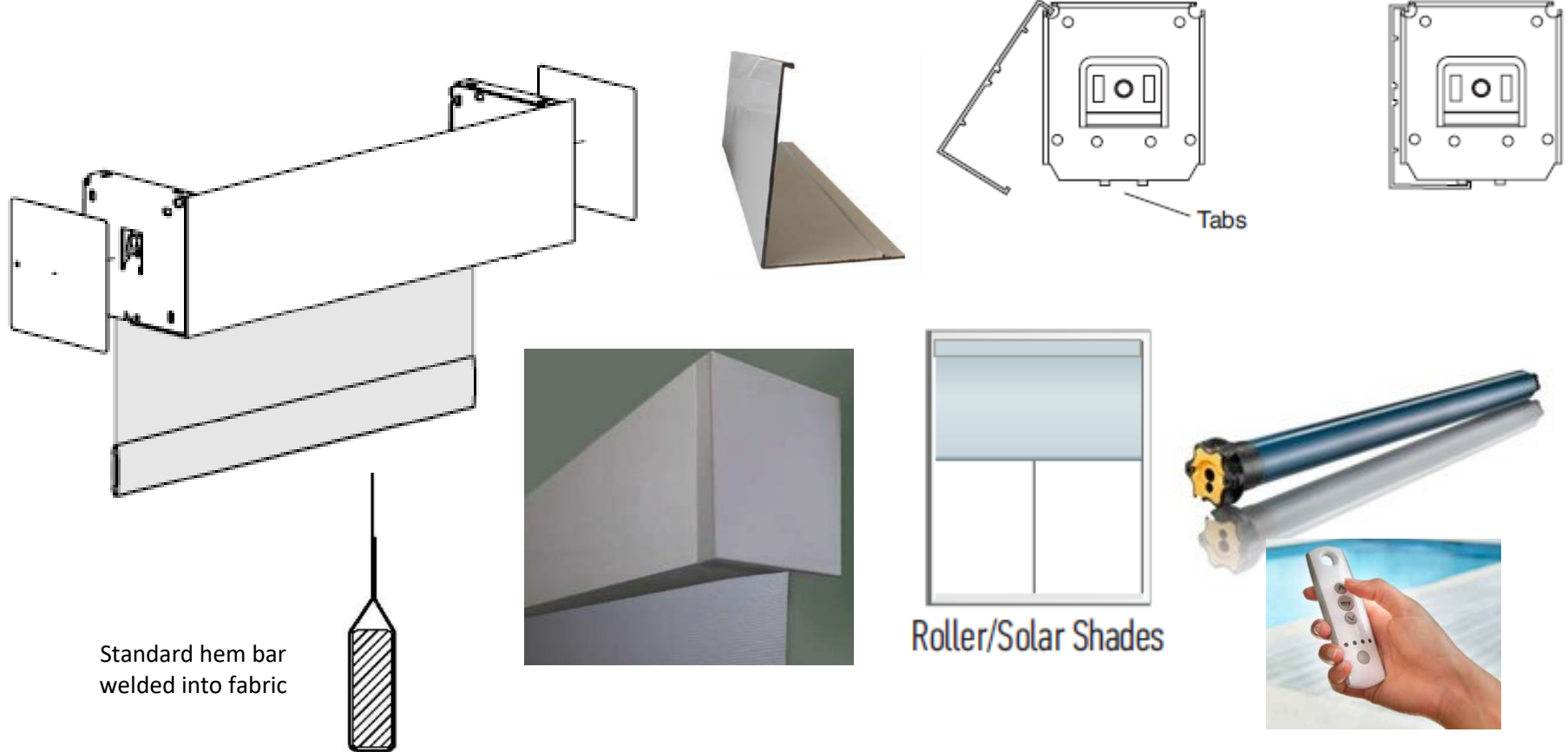
The ISC7000 is a vertical rolling interior shade system. The 7000 is standard with motorized operation. Available with an optional fascia covering of 4". Motorized units available with hard wired radio controlled 500 series RTS Altus motor.

Type	Standard Frame Colors	Standard Widths	Standard Heights	Recommended Applications	Recommended Fabrics
ISC7000	White, Anodized Silver & Bronze, Vanilla	Up to 14' 24' with split	Up to 14' Dependent on fabric	Residential & Commercial Windows	Mermet E screen & Avila Other fabrics special order

- The R screen is the original Rollease interior screen system.
- Minimal light gaps.
- Ideal for both residential and commercial applications.
- Available with motorized operation using Somfy 500 series LT50 RTS Altus hardwire Motors.
- Easy installation



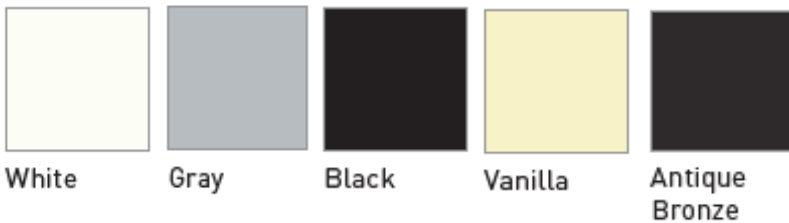
# ISC7000 Interior screen



Standard hem bar  
welded into fabric

Roller/Solar Shades

## AVAILABLE FASCIA COLORS



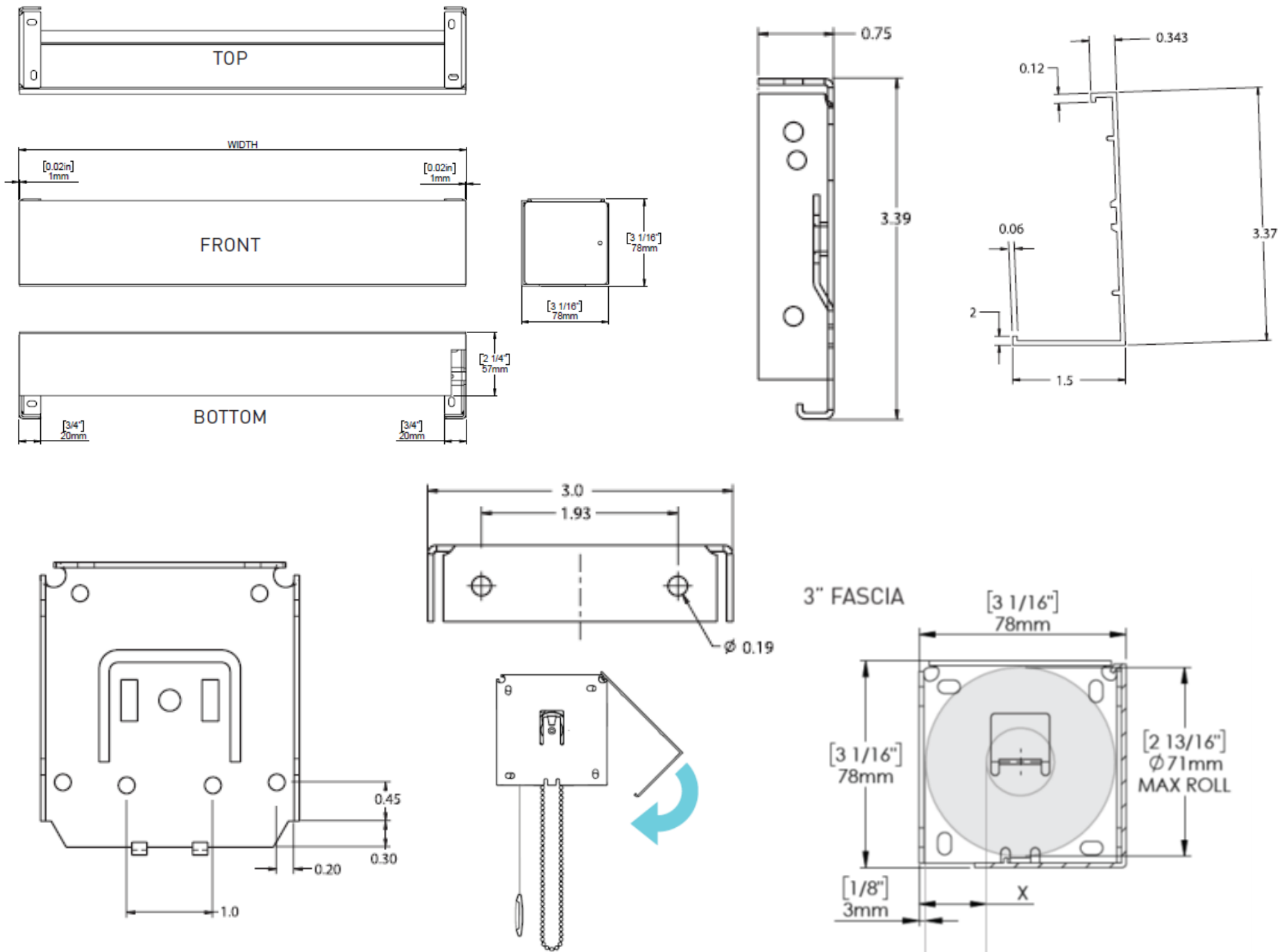
## OPTIONAL FASCIA:

Max screen height 4" Fascia is 14 ft.

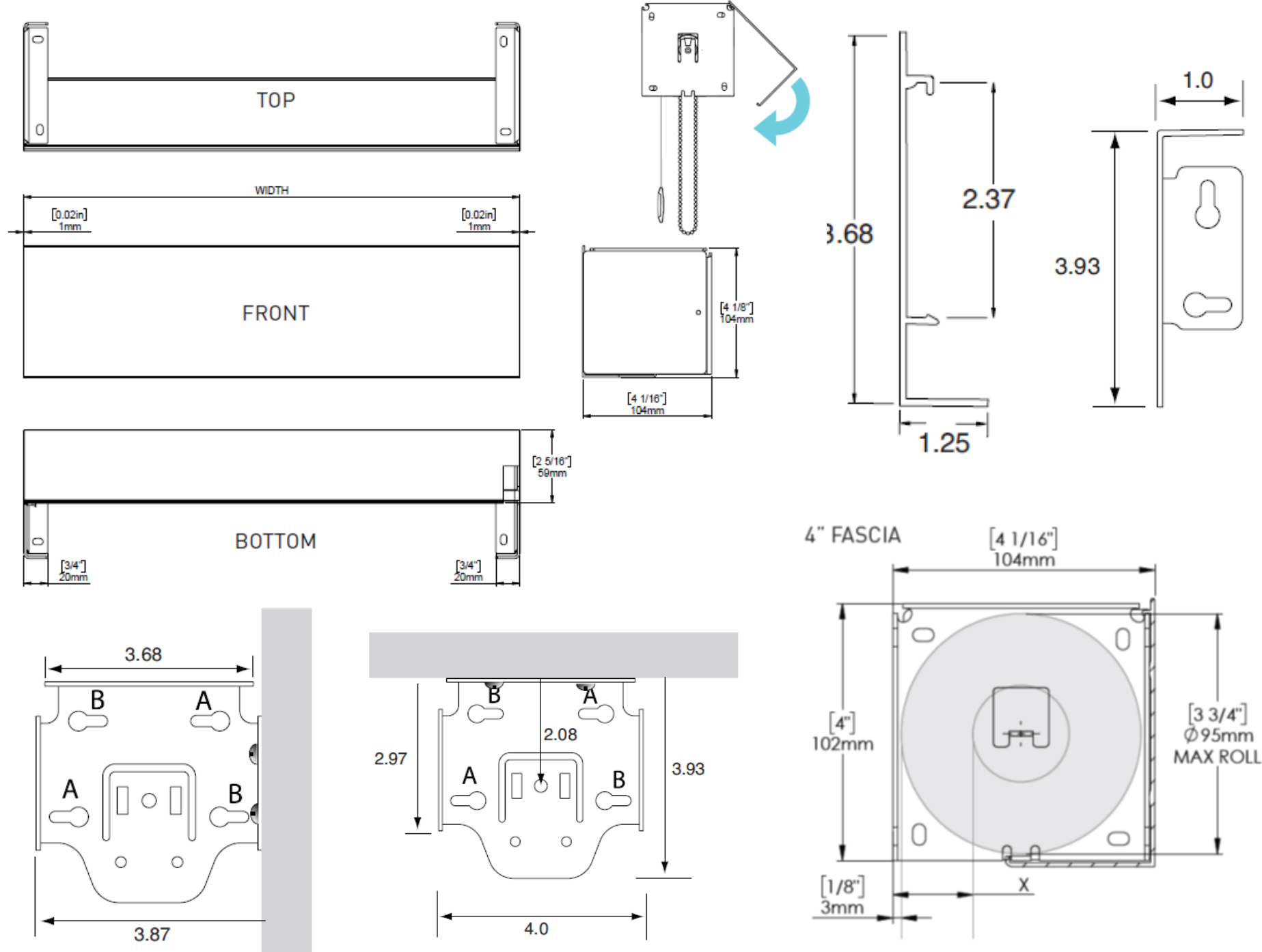
## OPERATION:

Standard motorized with Somfy LT50 Hardwire RTS Altus motor (Remote additional).

3" FASCIA

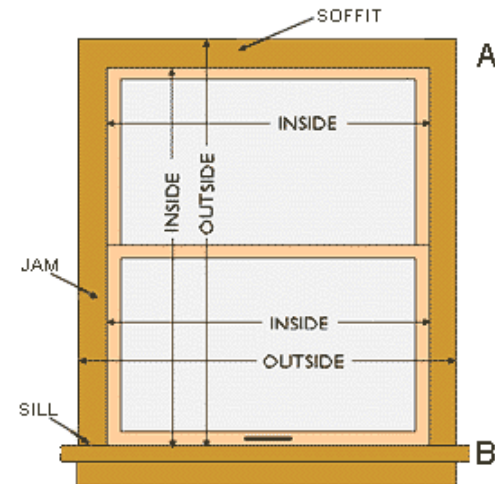
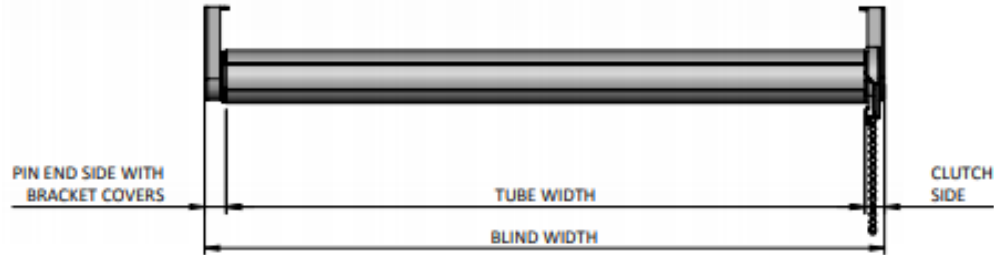


4" FASCIA



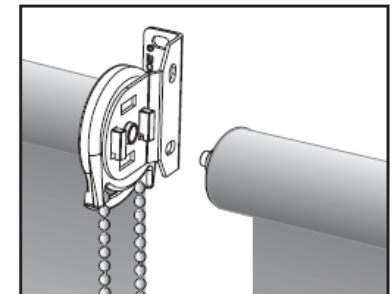
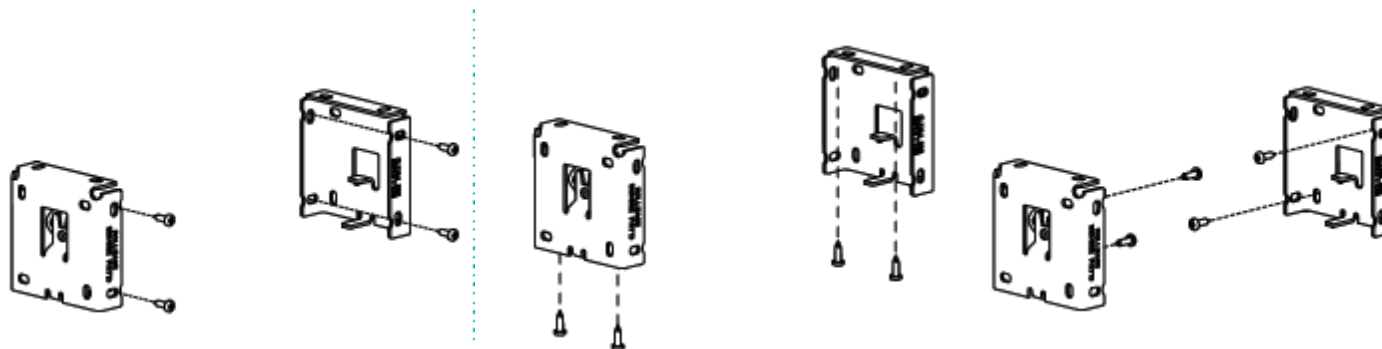


## MEASURING ISC6000 & 7000:



**Width:** All widths must be submitted to the factory as finished sizes. No factory deductions will be made. Shades are manufactured with measurements “outside of bracket” to “outside of bracket”. If fascia is ordered, the fascia will be cut the width of the brackets as well. The plastic end caps that are added on each for a finished look will add about 1/8” on each side to the width. If you are mounting between columns that protrude, the end caps are not needed. So, make sure you deduct enough on the width of the screen to accommodate the extra 1/8” on each side for the beauty cap if needed and used. The bracket you will receive will depend on if the shade has fascia or not, and what size fascia if ordered.

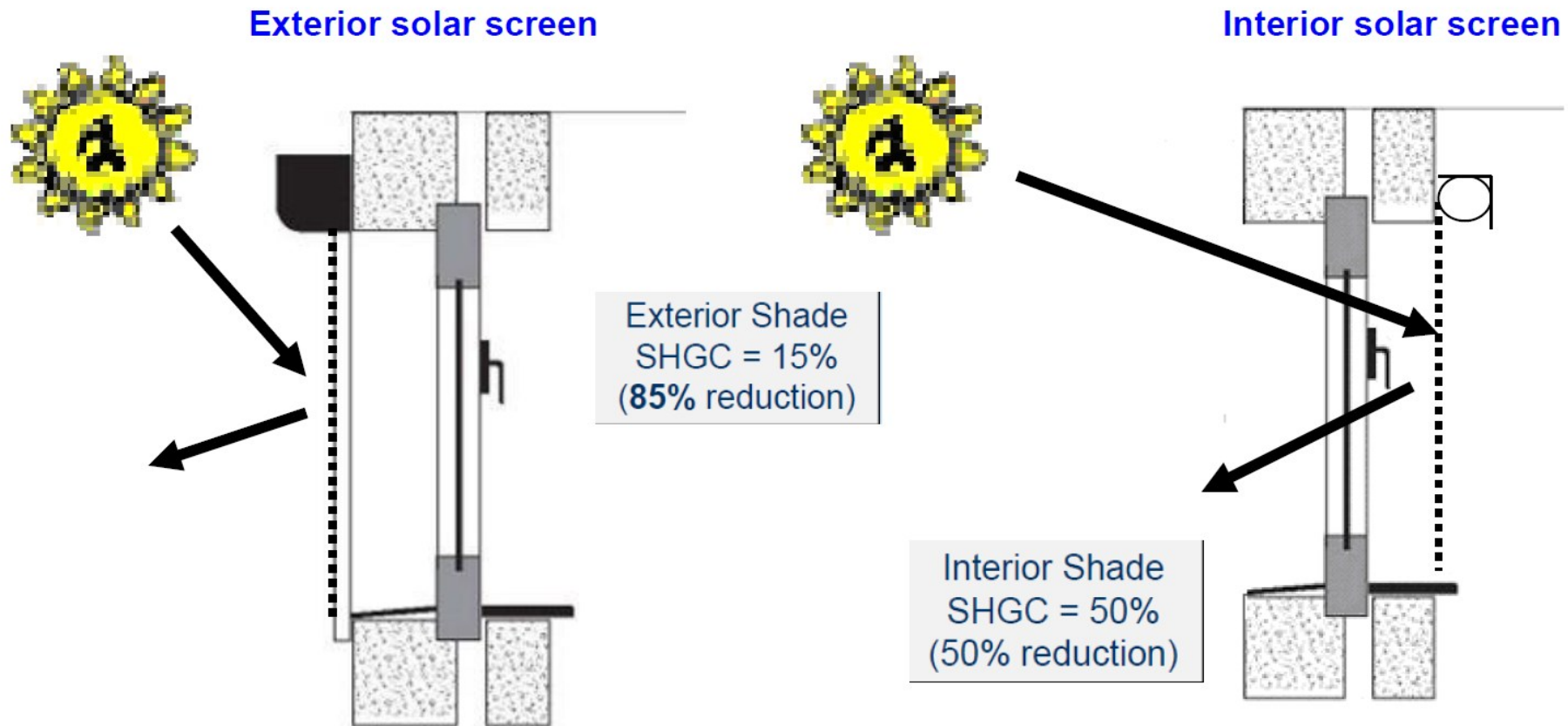
**Height:** The height of the screen you order will be from the top of the roller assembly to the bottom of the internal hem weight bar when the shade is lowered.



Note: If sharing a bracket between two shades, bracket can only be shared by a clutch and a pin end, not a clutch-to-clutch or pin end to pin end.



## BENEFITS OF SOLAR SCREENS cont:



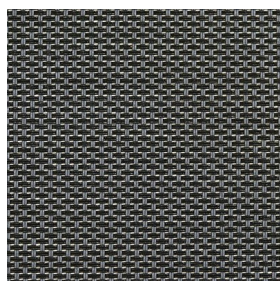
Solar screens can be installed both on the exterior and interior applications of residential and commercial spaces. The benefit with exterior solar screens is that the fabric blocks the sun before it enters the home or space through the glass. Sometimes it is not feasible to install an exterior screen. In such a case, interior screens offer a good alternative. Interior screens are also more economical.



# E Screen

Interior Screen Fabric

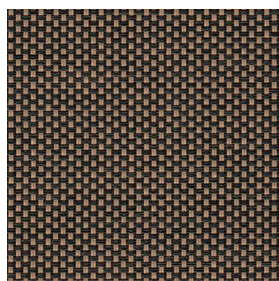
Conventional | 1% 3% 5% 10% openness



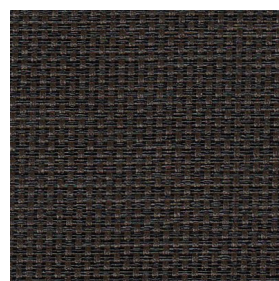
Charcoal / Grey



Charcoal / Charcoal



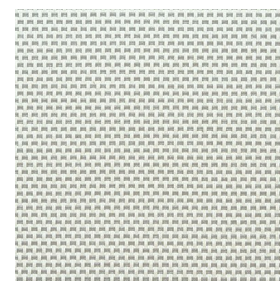
Charcoal / Apricot



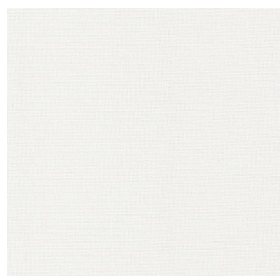
Charcoal / Cocoa



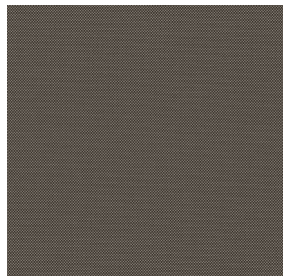
White / Linen



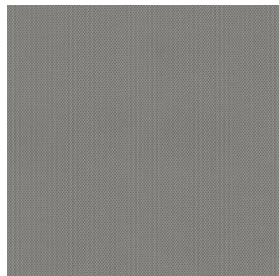
White / Pearl



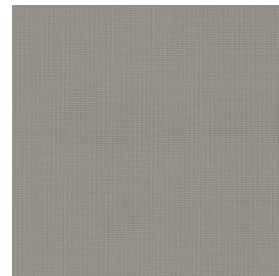
White / White



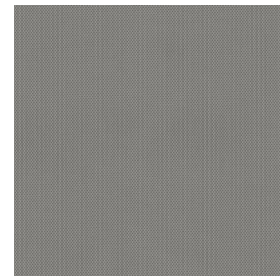
Charcoal Grey  
/ Stone



Pearl / Linen



Pearl / Pearl



Pearl / Grey

## Product Specifications Sheet



# AVILA Twilight



Interior Screen Fabric / 0% open

Privacy and Black out

Fire rated for residential applications

000060  
Black

000050  
Graphite

000001  
Pewter

000018  
Ash

000012  
Frost

000016  
Chalk

000020  
Linen

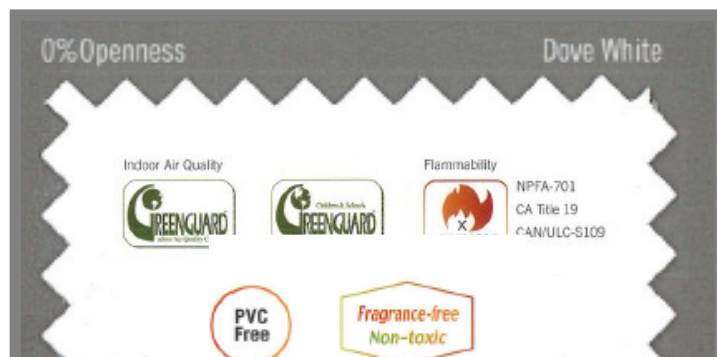
000017  
Canvas

000002  
White



# SierraSol

## SPECIAL ORDER FABRIC Blackout Fabric



### Mesa

Interior B/O Fabric

SPECIAL ORDER /  
QUOTE

#### FENESTRATION PROPERTIES

#### SHADING COEFFICIENT

Mesa	Ts	Rs	As	Tv	1/8" C/L	1/4" C/L	1/4" H.A.
Dove White	0	76	24	0	0.22	0.23	0.26

\*Similar fenestration data achieved for all other colors

#### SPECIFICATIONS

Series	SierraSol Mesa
Composition	100% Polyester with Acrylic Foam Backing (PVC-Free)
Openness Factor	Opaque
Weight	9.4 oz/yd <sup>2</sup> (320 g/m <sup>2</sup> ) +/-5%
Thickness	0.022 in (.55mm) +/-5%
Colorfastness	Grade 6-7
Standard width	98.4" (2.5m) and 118" (3m)
Standard length	27yd/roll (25m)



# MOTORIZATION

POWERED by  
**somfy**



Awnings



Exterior Screens



Pergolas



Roller/Solar Shades

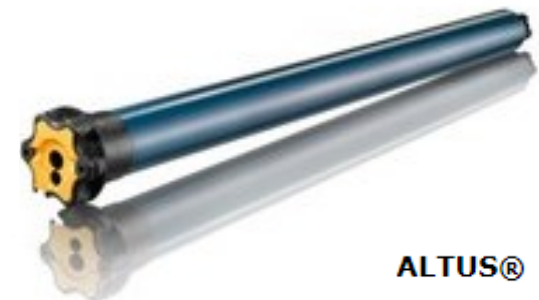
Sunair is proud to offer the full line of Somfy motors and controls for our awnings and screens program. SOMFY RTS features motors with an integrated radio receiver that allows you to operate the awning by remote control with a wall mounted or hand held remote or by smart phone device. With a simple click of your remote, the awning or shade will extend or retract automatically. The manual override Sunea motor is ideal for awnings and the Altus motors is ideal for exterior screens. Each motor can be configured with a cord & plug which can simply be plugged into your patio outlet. They are available in 1.4", 11', 17', & 23' lengths. Altus motor cords depend on motor model and is standard either 6' or 10' pigtail cords. Optional Altus plug in cords are available in 10', 18', and 24' lengths. Optional screen motor is Maestria with obstacle detection. Add Tahoma smart phone and table interface.



**SUNEA™ CMO**



**Sunea quick connect**



**ALTUS®**

# SOMFY REMOTES:



Situo 1 & 4 hand held remotes

One (1) through (16) channel hand held or wall mounted remotes are available. Remotes are available in different colors to suit your style, please inquire.



Situo hand-held remotes offer convenient and simple operation of every type of motorized application. Channels help organize the motorized products that are operated. Single channel remotes can operate one individual product or one group of motorized products. Multiple channel remotes can handle groups of motorized products.



Telis 1 Chronis  
RTS Timer



DecoFlex WireFree™ RTS  
Wall Switches



Telis 1 Patio for  
exterior use



Smooove® 1 RTS  
Surface Mount Wall Switch



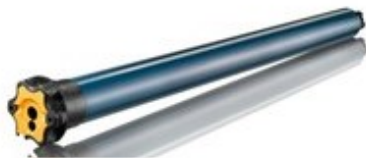
Telis 16 RTS  
Hand-held Remote

## AVAILABLE AUTOMATIC SENSORS & CONTROLS



Sunis & ThermoSunis  
Indoor WireFree™ RTS Sensors





# SOMFY HARDWIRE MOTOR WIRING



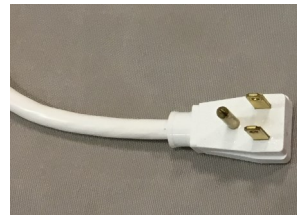
**Radio Technology Somfy**

Radio Technology Somfy® (RTS) allows wireless radio control of motorized applications via the RTS family of controls.



The three (3) wire cords can be wired in parallel and can be ordered with a molded plug to simply plug into an exterior UL approved GFI outlet. The standard four (4) wire cords must be hard wired with a traditional toggle wall switch. Screens can not be ordered with molded plugs on the end.

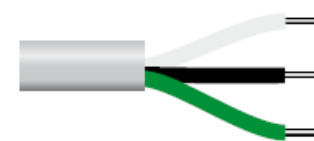
**Optional molded plug is available for "awning" motors only**



## Type of power cable

**RTS plug in capable motor cord**

**RTS**  
120V AC / 60Hz  
3 conductor cable



white = neutral  
black = hot  
green = ground

## All Somfy Motors are UL and CSA Recognized

- All SOMFY motors are UL Recognized and can be found under the following file numbers:  
E60495, E60888, E63714

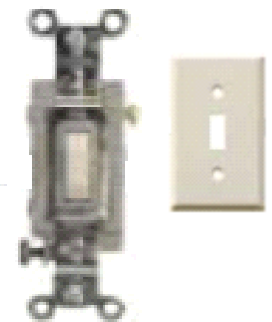
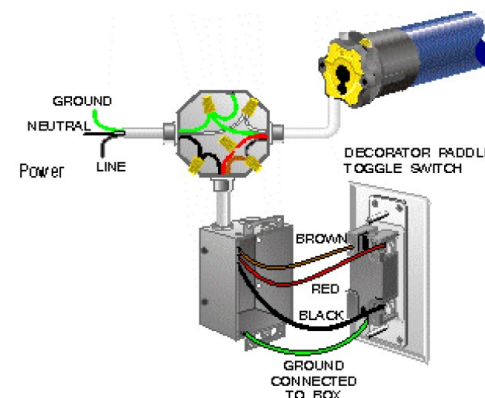


**Wired**  
120V AC / 60Hz  
4 conductor cable



white = neutral  
red = direction 1  
black = direction 2  
green = ground

**Hardwired motors with a wall switch**

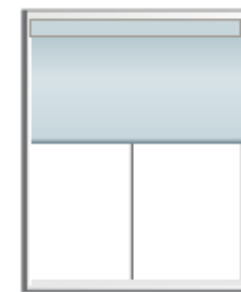


# SONESSE® 30 WIREFREE (LI-ION) RTS

POWERED by  
**somfy**



**SOMFY / Battery operated rechargeable motor  
for interior roller shades (Ultra Quiet).**



Roller/Solar Shades

## Interior Roller Shade Size:

**Max 10 ft. wide x 8 ft High**

**Minimum width 28" with motor**

## Specifications

Voltage	12V DC
Torque	2 Nm
Sound Level	44 dBA
Speed	10-28 rpm adjustable
Low Battery Indicator	LED
Radio Frequency for RTS	433.42 MHZ

- Designed to perform quietly to enhance end-user experience.
- Built-in rechargeable lithium-ion battery minimizes maintenance and need to install and replace batteries.
- Great for interior roller shade applications ranging from small to larger window treatments.
- Ideal for areas where wiring is a challenge.
- Flexible speed and tilt power adjustments for optimal customization.
- Compatible with all Somfy remotes, My link, and Alexa Integration.



Somfy  
DESIGNED FOR  
SILENCE



## Somfy TaHoma® RTS Smartphone and Tablet Interface

The Somfy TaHoma® gateway and smart phone app provides convenient and customized control of Somfy powered motorized shades, blinds, and other motorized solutions. Control up to 40 RTS (Radio Technology Somfy) channels using the TaHoma app. Multiple TaHoma devices can be joined for multi-zone control.



- North America app, you can remotely activate both Zigbee and RTS products Supports UP/DOWN/MY/STOP commands for motorized shades/blinds .
- Supports incremental control for Tilt motors and lighting ? Supports ON/OFF commands for control of lighting or other devices powered via the Zigbee Smart Plug Multiple users .
- Remote access Control4® Certified ? Integration with third-party systems over IP ? Compatible with Somfy Synergy™ API



TaHoma® RTS



## Bond Home / Smartphone and Tablet Interface

Bond Bridge and Bond Bridge Pro works as a bridge between Wi-Fi and your remotes recorded signal allowing you to operate your Sunair shades, awnings, pergolas, ceiling fans, fireplaces and more with the Bond app. Works with Somfy and other motor manufacturers.



### Remote control from anywhere

Be able to control everything even from outside your home.



### Bond Bridge

- Works with Alexa, Google Home, and SmartThings,
- Remote Control via Bond Home app
- Works with iPhone or Android
- No installation needed
- Smart home functionality without breaking the bank

### Bond Bridge Pro: **Added features...**

- Ethernet port & PoE technology
- Smart home integrations
- Ceiling and wall mount

### OPTIONAL:

- Sidekick for Shades: 5-channel Shade and awning

# BOND REMOTE SWITCH:

## Sidekick for Shades/Awnings: 5-channel Shade Keypad

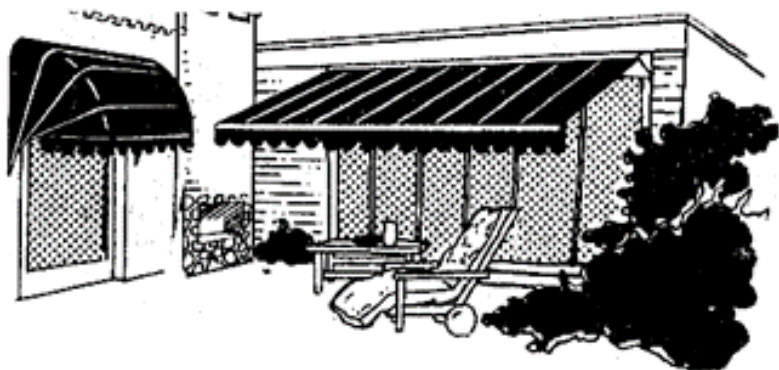


- Wireless flush mount shade remote.
- Communicates directly with the shade.
- 10-year battery life.
- Set up shade limits – no manufacturer remote required.
- This version of Sidekick does not support Scene Keypad functionality.
- 10-year battery life.
- Install with or without a workbox (flush mount).
- 5-channel control.
- Set up shade limits – no manufacturer remote required.



# Notes

**Note: Sunair® reserves the right to change engineering, specifications and prices without notice.  
Images and Illustrations in the catalog may vary from digital and printed manuals.**



***SUNPROOFING AMERICA!***



**MARYLAND LOCATION**

Mailing: P.O. Box 1068  
Shipping: 7785 Rt. 175  
Jessup, MD 20794

Toll Free    800 - 548 - 0408  
Phone:       410 - 799 - 1145  
Fax:          410 - 799 - 5584

**ARIZONA LOCATION**

Mailing: Same as Jessup  
Shipping: 3807 West Thomas Rd.  
Phoenix, AZ 85017

Toll Free    877 - 272 - 3920  
Phone:       602 - 272 - 3920  
Fax:          602 - 272 - 3925

**[www.sunairawnings.com](http://www.sunairawnings.com)**

**[info@sunairawnings.com](mailto:info@sunairawnings.com)**