

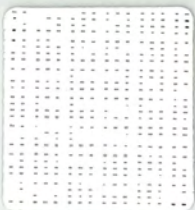
[ 4% Open ]

# SOLTIS

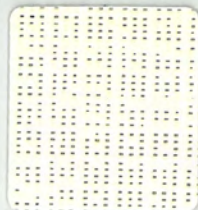
92



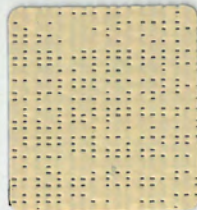
92-2043



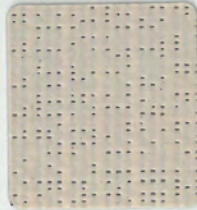
92-2044



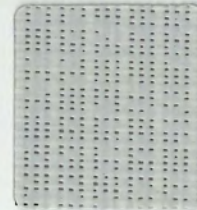
92-2175



92-50265



92-2135



92-2171



92-2053

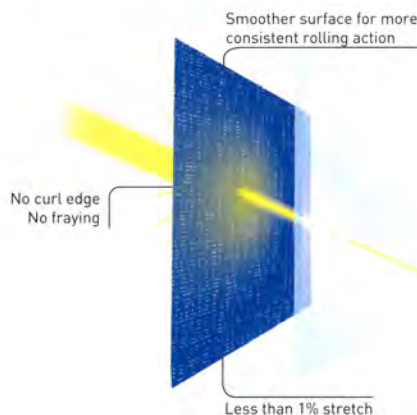
Additional colors are available on request

# SOLTIS

## 92

## Exclusive Précontraint Serge Ferrari® technology

Patented worldwide, Précontraint Serge Ferrari® technology involves keeping the composite under tension throughout the manufacturing cycle.



### Strength characteristics

- Exceptional dimensional stability
- Long-term strength
- Greater coating thickness at the top of the yarns
- Exceptional flatness

### Benefits

- **No material deformation during installation or usage**
- **No elongation, tear resistant**
- **Long-term strength and aesthetic quality**
- **Thinness**
- **Smooth finish, easy maintenance**
- **Compactness, easy rolling**

### TECHNICAL PROPERTIES

	Soltis 92	Standards
Openess factor	4 %	
Weight	12.4 oz/sqyd	EN ISO 2286-2
Roll width	69.7" 105.1"	Depending on the color
Roll lengths: 69.7" wide 105.1" wide	54.68 yds 43.74 yds	
Flame retardancy	<b>Method 1/NFPA 701 • CSFM T19 • Class A/ASTME84</b>	
Quality management system	ISO 9001	
Certifications, labels, guarantees, recycling		



### SOLAR AND LIGHT PROPERTIES (EN 14501)

References	TS	RS	AS	TV <sub>n-h</sub>	g <sub>tot</sub> <sup>e</sup>	g <sub>tot</sub> <sup>i</sup>
92-2043	2	12	86	2	0.06	0.52
92-2044	20	70	10	19	0.14	0.34
92-2053	3	6	91	3	0.07	0.54
92-2135	9	46	45	6	0.08	0.41
92-2171	8	43	49	6	0.08	0.42
92-2175	19	64	17	16	0.13	0.36
92-50265	9	49	42	6	0.08	0.40

TS: Solar Transmission [%]

RS: Solar Reflection [%]

AS: Solar Absorption [%]

TS + RS + AS = 100% of incident energy

TV n-h: Normal-hemispherical visible light transmission [%]

g<sub>tot</sub><sup>e</sup>: External solar factor

g<sub>tot</sub><sup>i</sup>: Internal Solar Factor

Type "C" glazing: insulating, slightly emissive double glazing in position 3 (4 + 16 + 4; argon-filled - g=0.59 - U=1.2.).

The technical data above are averaged values with a +/- 5% tolerance.

The buyer of our products is fully responsible for their application and their transformation with regard to any possible third party. The buyer of our products is responsible for their implementation and installation according to the standards, workmanship and safety regulations in force in destination countries. For information on our contractual warranty, please refer to the relevant terms and conditions.

The values quoted above represent results of tests performed in compliance with common design practices and are provided for information only to enable customers to make the best use of our products. Our products are subject to changes based on technical advances and we reserve the right to modify their characteristics at any time. The buyer of our products is responsible for checking the validity of the above data.

### → Contact

SERGE FERRARI NORTH AMERICA  
1460 SW 6th Court  
Pompano Beach, FL. 33069  
T: (954) 942-3600

### → TEXYLOOP®

- The Serge Ferrari operational recycling chain
- Secondary raw materials of high intrinsic value compatible with multiple processes
- A quantified response to combat depletion of natural resources

www.texyloop.com