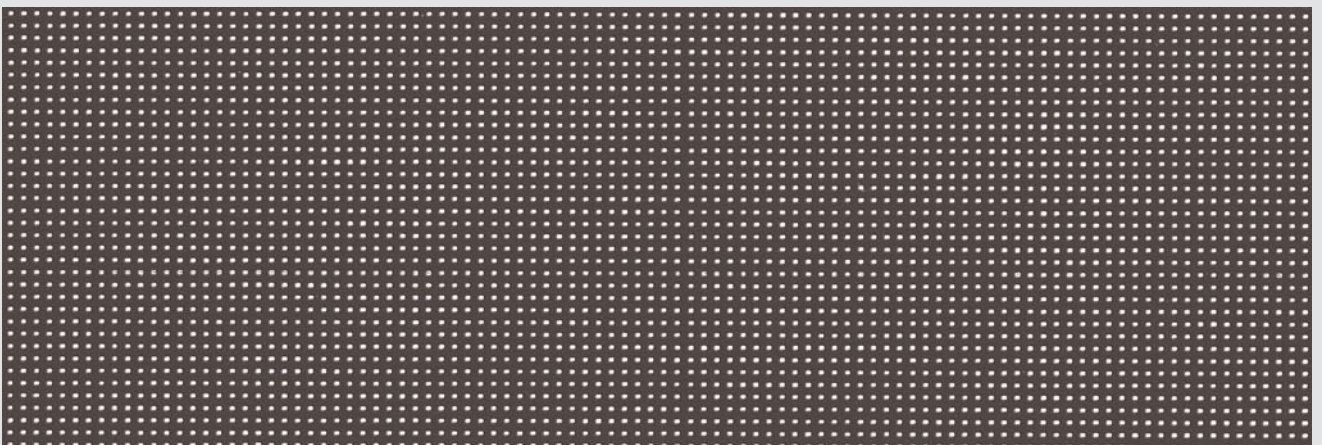


[ 8% Open ]

# SOLTIS

## 88



88-2043



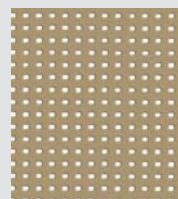
88-2044



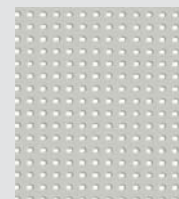
88-2175



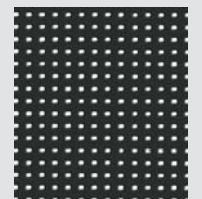
88-2135



88-2012



88-2171



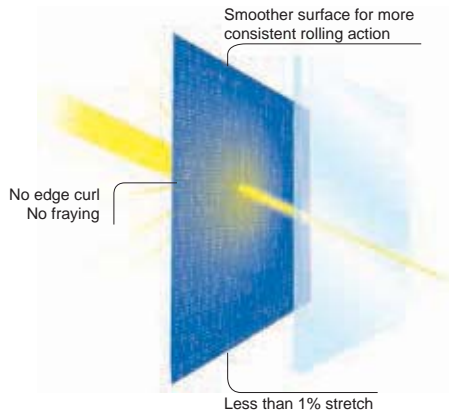
88-2053

*Additional colors are available on request.*

  
**Serge Ferrari**

## Exclusive Précontraint Serge Ferrari® technology

Patented worldwide, Précontraint Serge Ferrari® technology involves keeping the composite under tension throughout the manufacturing cycle.



### Strength characteristics

- Exceptional dimensional stability
- Long-term strength
- Greater coating thickness at the top of the yarns
- Exceptional flatness

### Benefits

- **No material deformation during installation or usage**
- **No elongation, tear resistant**
- **Long-term strength and aesthetic quality**
- **Thinness**
- **Smooth finish, easy maintenance**
- **Compactness, easy rolling**

### TECHNICAL PROPERTIES

	Soltis 88	Standards
Openness factor	8 %	
Weight	10.61 oz/sqyd	EN ISO 2286-2
Roll width	69.7" 105.1"	Depending on the color
Roll lengths: 69.7" wide	54.68 yds	
105.1" wide	43.74 yds	
Flame retardancy	<b>Method 1 &amp; 2/NFPA 701 • CSFM T19 • Class A/ASTM E84</b>	
Quality management system	ISO 9001	
Certifications, labels, guarantees, recycling		



### SOLAR AND LIGHT PROPERTIES (EN 14501)

	References	TS	RS	AS	TV <sub>n-h</sub>	g <sub>tot</sub> <sup>e</sup>	g <sub>tot</sub> <sup>i</sup>
	88-2012	12	29	59	10	0.13	0.48
	88-2043	9	12	79	8	0.13	0.53
	88-2044	24	67	9	22	0.17	0.35
	88-2053	8	6	86	8	0.13	0.55
	88-2135	14	42	44	11	0.13	0.43
	88-2171	13	38	49	11	0.13	0.45
	88-2175	24	62	14	21	0.17	0.37

**TS:** Solar Transmission (%)  
**RS:** Solar Reflection (%)  
**AS:** Solar Absorption (%)  
**TS+RS+AS=** 100% of incident energy  
**TV n-h:** Normal-hemispherical visible light transmission (%)  
**g<sub>tot</sub><sup>e</sup>:** External Solar Factor  
**g<sub>tot</sub><sup>i</sup>:** Internal Solar Factor  
 Type "C" glazing: insulating, slightly emissive double glazing in position 3 (4 + 16 + 4; argon-filled - g=0.59 - U=1.2.).

The technical data above are averaged values with a +/- 5% tolerance.

The buyer of our products is fully responsible for their application and their transformation with regard to any possible third party. The buyer of our products is responsible for their implementation and installation according to the standards, workmanship and safety regulations in force in destination countries. For information on our contractual warranty, please refer to the relevant terms and conditions.

The values quoted above represent results of tests performed in compliance with common design practices and are provided for information only to enable customers to make the best use of our products. Our products are subject to changes based on technical advances and we reserve the right to modify their characteristics at any time. The buyer of our products is responsible for checking the validity of the above data.

#### → Contact

SERGE FERRARI NORTH AMERICA  
 1460 SW 6th Court  
 Pompano Beach, FL. 33069  
 T: (954) 942-3600  
 marketing.us@sergeferrari.com

#### → TEXYLOOP®

- The Serge Ferrari operational recycling chain
- Secondary raw materials of high intrinsic value compatible with multiple processes
- A quantified response to combat depletion of natural resources

www.texyloop.com