



# SOLHARO®

**For glass Conservatories and for Sun Rooms**

**The Solharo® is the ideal solar protection solution for sunrooms and conservatories. With a standard motor, the shade will automatically extend to shade and lower the temperature in the room. The system is designed for solar control and can be used in rain if configured with mesh fabric.**

Type	Standard Frame Colors	Standard Widths	Standard Projections	Recommended Applications	Recommended Fabrics
<b>Tensioned Track System Conservatory Shade</b>	<b>9 standard Sunair colors</b>	<b>Through 27' Split multiple bays See price list</b>	<b>5' through 19' 8" See Price list</b>	<b>Conservatory rooms and wood structures Retractable</b>	<b>Soltis 86 &amp; 92 Mesh Sunbrella / Para</b>

- **Protects against the sun and lowers the temperature in the sun room, significantly lowering cooling costs.**
- **Used for sun protection and solar control only ( Not for rain protection unless mounted on a 45 degree slope).**
- **The fabric blocks the sun before it hits the glass for more effective solar control.**
- **Prevents fading of your furniture, carpets, curtains, and wallpaper.**
- **Can cover small to large sun rooms & wood structures.**
- **Great for residential and commercial applications.**
- **Easy motorized operation standard.**
- **Hundreds of fabric or mesh colors to choose from.**

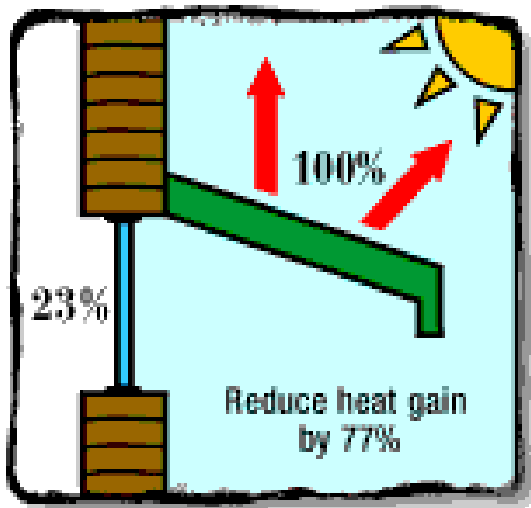


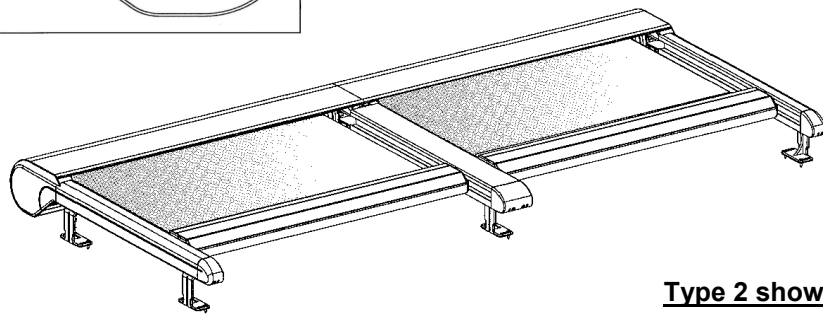
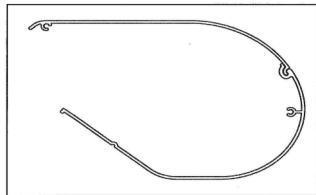
*Revised : Dec 14, 2018*

# BENEFITS OF AWNINGS

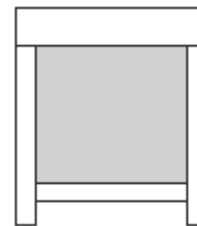


- Reduces indoor temperatures and energy costs while keeping you cool on your deck or patio.
- Reduce heat gain inside by as much as 77% and reduce sunlight and glare through your window by as much as 94% (see Minnesota energy study).
- A Sunair awning keeps you cool on your patio or deck, but it also minimizes your exposure to the sun's harmful rays.
- A Sunair® retractable awning will increase your outdoor living area comfortably and efficiently at a fraction of the cost of a permanent addition

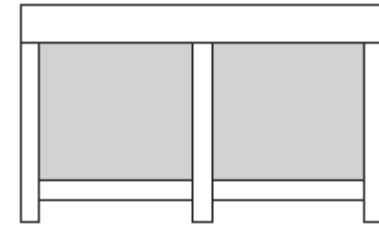




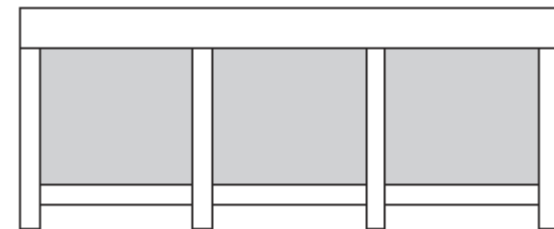
**Type 2 shown**



**Type 1**



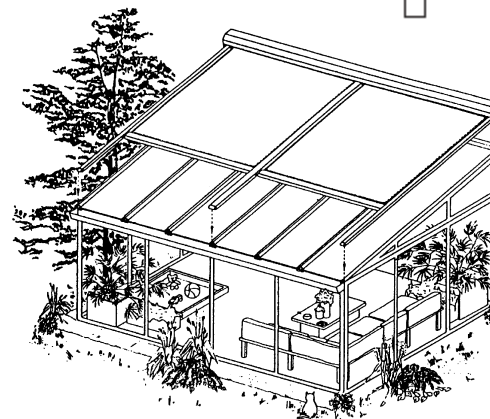
**Type 2**



**Type 3**

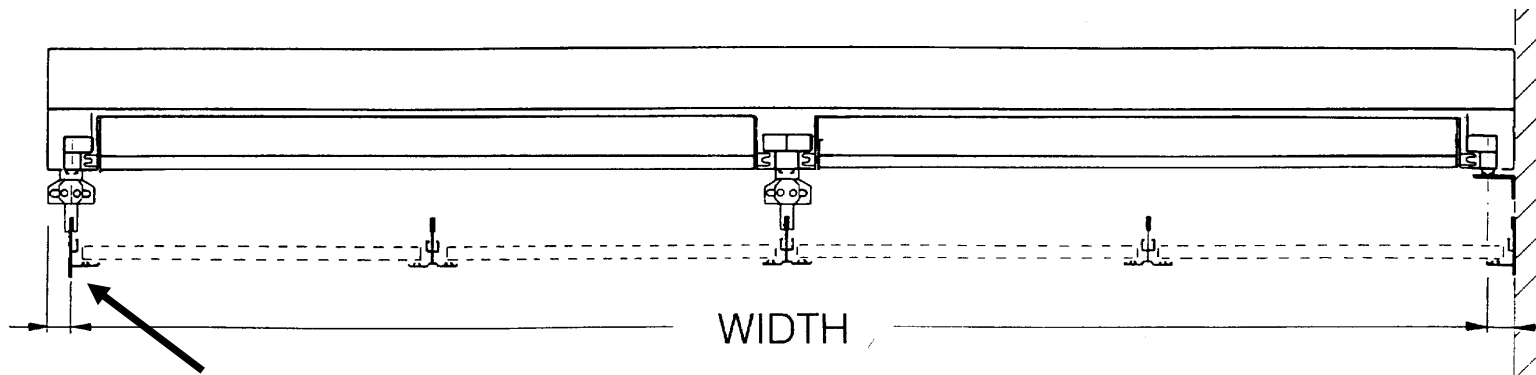


**Shown with  
extension brackets**





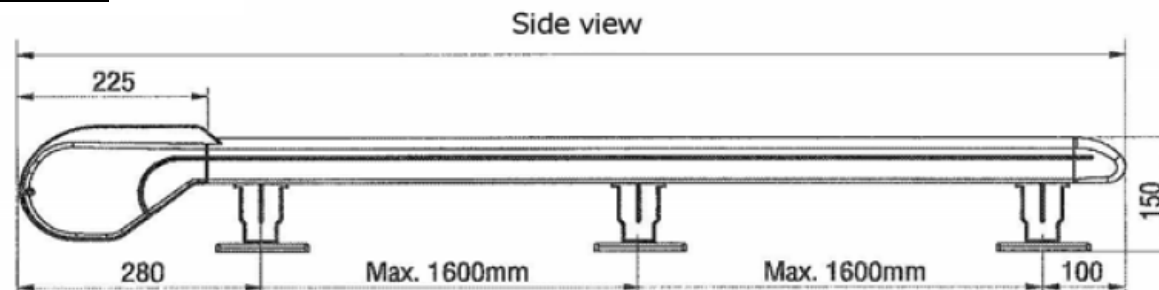
## MEASURING SOLHARO



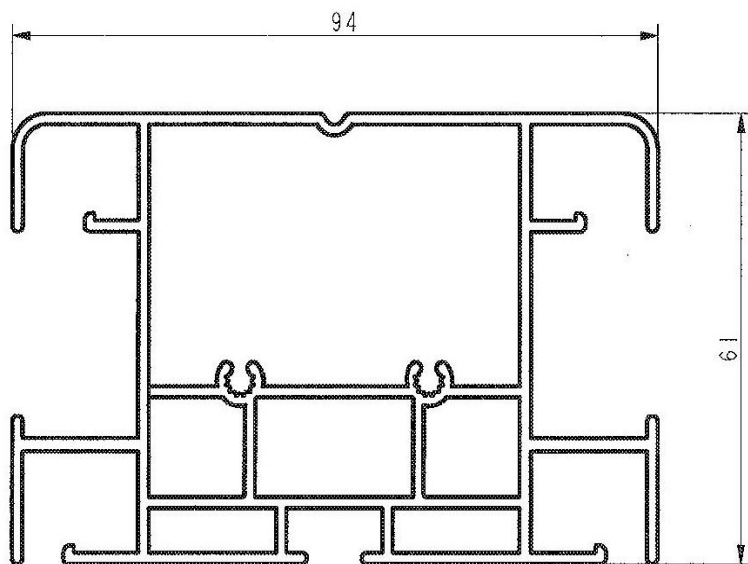
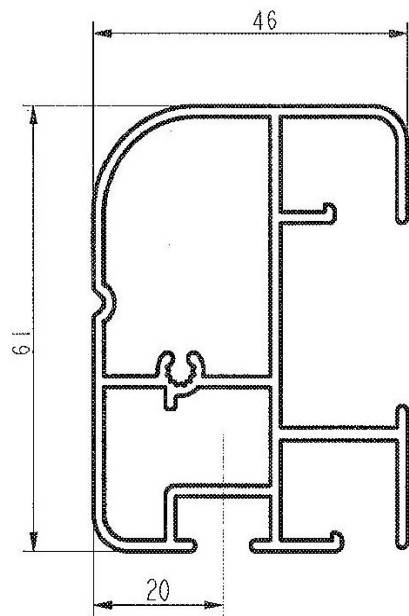
The cassette or end Tracks extends 1" beyond the center measurement of each track

The most important measurement is the measurement center to center of each beam of the structure. All orders must be submitted with the Solharo work sheet showing dimensions. The Solharo will then be manufactured with the guides or tracks running center of the beams. From the center of the outside lateral guides, the system extends 1" on each side (see illustration above). If multiple bays are required indicate where the center of each track needs to be. The bays can vary in size and it is not necessary to have each bay the same size. Consult the office if a bay is less than 6'7". The system can not extend down and around the curve. For best coverage you can extend the track 12" straight beyond the curve of the sunroom.

**Note: Dimensions in metric mm**

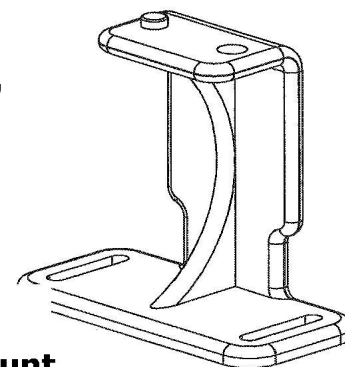


The aluminum housing containing the roller system is 6 ½" inches high or 165 mm high with the brackets. Different mounting situations can be accommodated (See further technical documents).



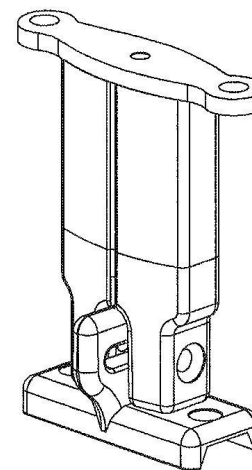
**Note: Dimensions in metric mm**

**Standard  
brackets 3"**



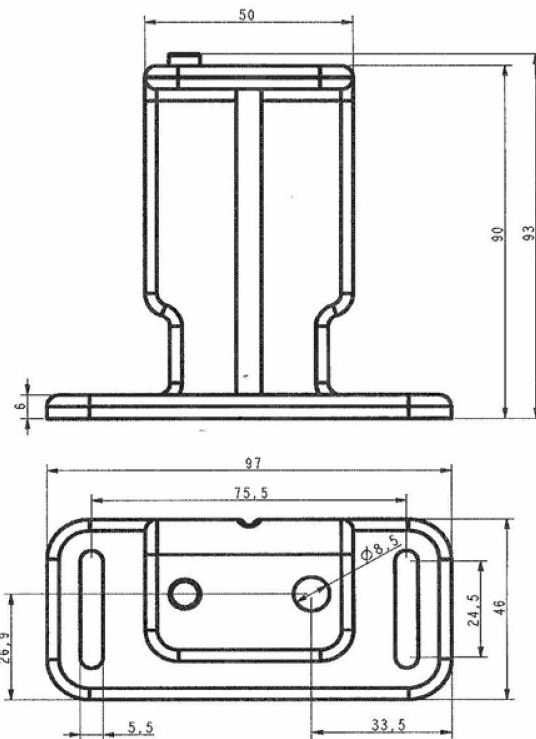
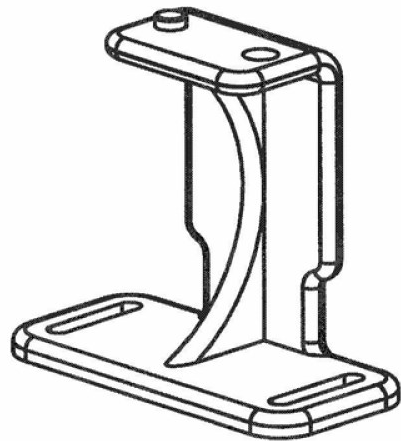
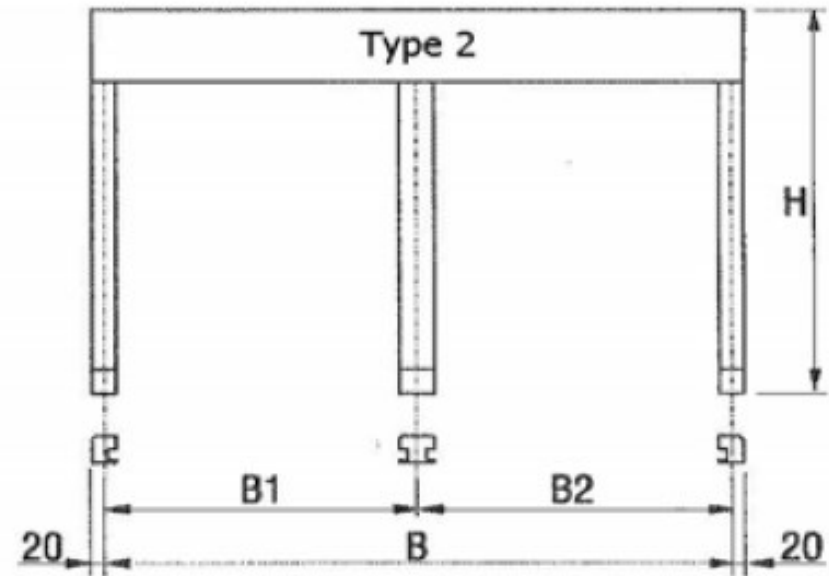
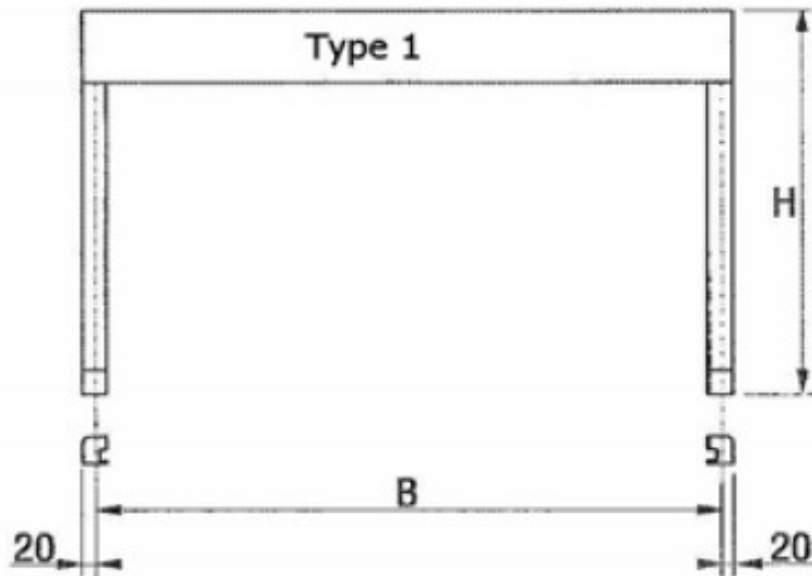
**Standard Mount**

**OPTIONAL  
Extension  
brackets 5"**



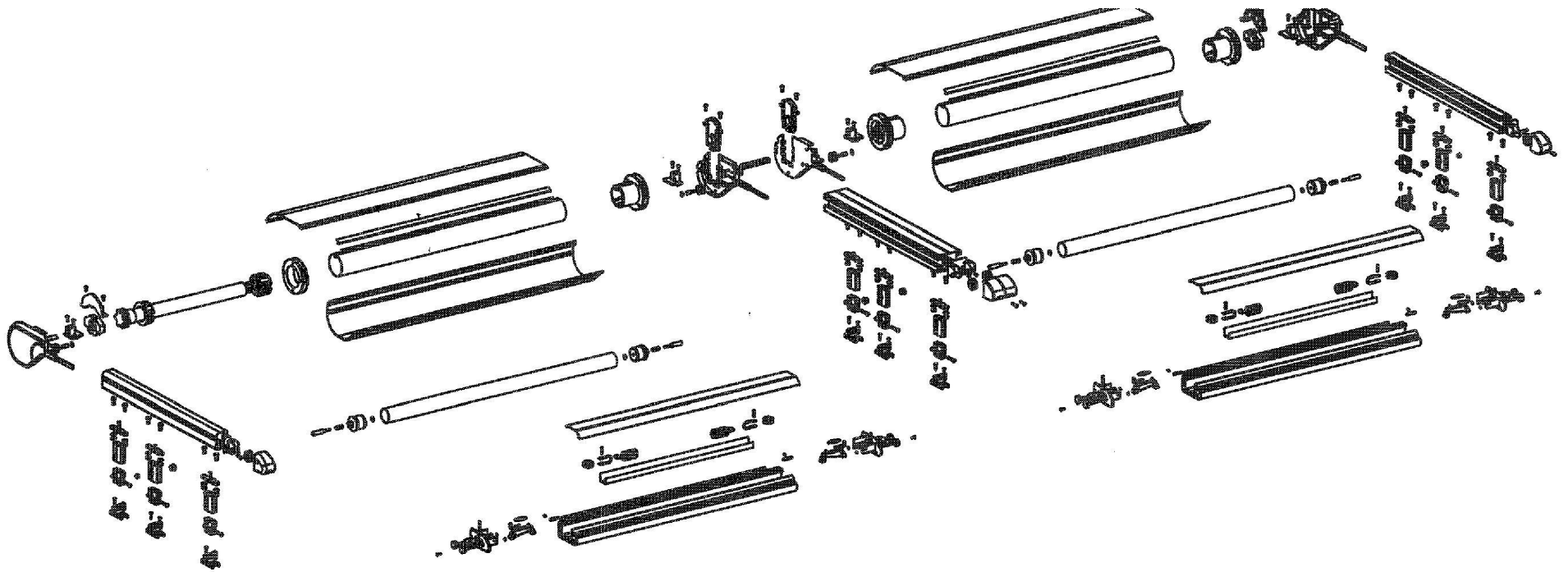
## **TECHNICAL DATA**

- Minimum width per section: 2,00m ( 6'7" )
- Maximum width per section: 4,50m (14'9")
- Maximum projection: 6,00m ( 19'8" )
- Maximum area per fabric: ca20m<sup>2</sup>



**Note: Dimensions in metric mm**

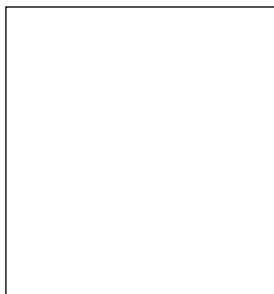
# SOLHARO® EXPLODED VIEW



# FRAME COLORS ( STANDARD)

## *Awnings & Screens\**

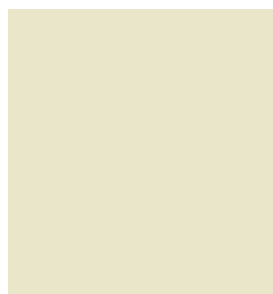
\*Note: See each model technical page for available frame colors.



**WHITE Gloss**  
Ral 9016



**MOCHA**  
Semi Gloss



**CREAM Gloss**  
Ral 1013



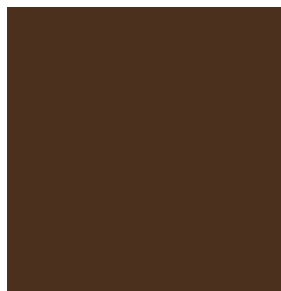
**BLACK Gloss**  
Ral 9005



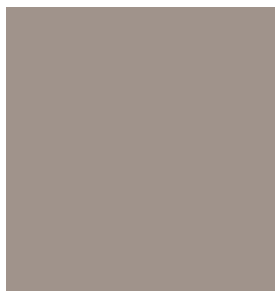
**BRONZE**  
Coarse



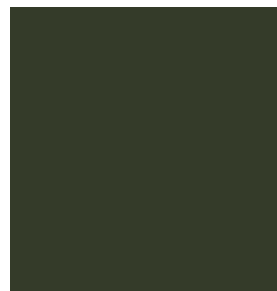
**GREY Gloss**  
Ral 7040



**BROWN Gloss**  
Ral 8019



**TAUPE Gloss**  
Ral 7030



**GREEN Gloss**  
Ral 6005

### OPTIONAL



**FULL RAL COLOR  
RANGE / EXTRA COST**

**NOTE:** ACTUAL FRAME COLOR MAY VARY FROM DIGITAL IMAGES





**TEMPOTEST®**  
ITALIAN PERFORMANCE FABRICS



**2018**

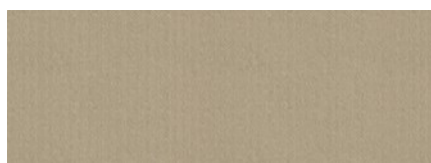
## ACRYLIC FABRIC COLLECTION



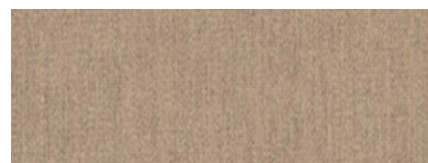
Fabric covers sewn with Tenara thread.



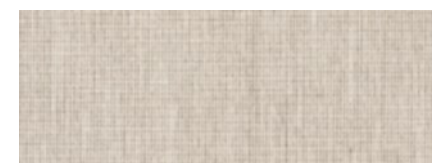
**101 Elite Toast**



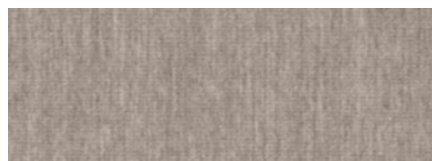
**102 Cappuccino**



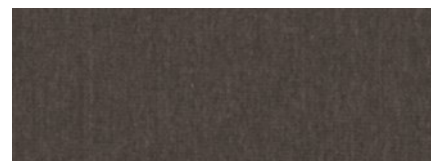
**106 Toffee**



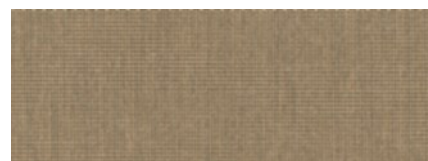
**986/15 Textured Lt. Grey**



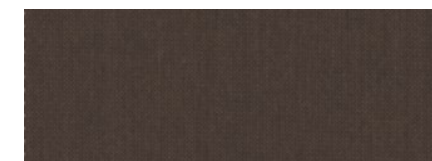
**727/15 Textured Med. Grey**



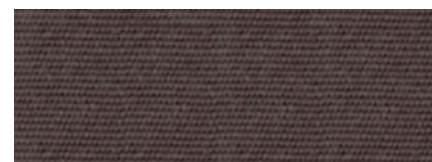
**107 Textured Dk. Grey**



**986/106 Textured Beige**



**873/2 Textured Cocoa**



**97/84 Plum**



**407/3 Green Classic Tweed**



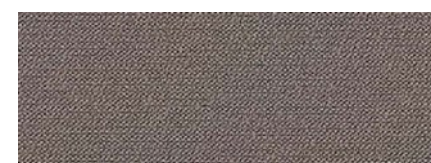
**407/16 Moss Classic Tweed**



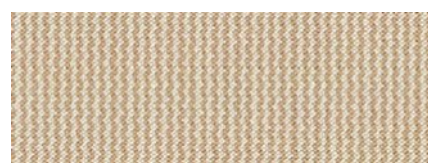
**407/14 Toast Classic Tweed**



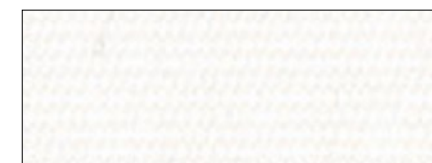
**407/926 Grey Classic Tweed**



**926 Taupe Classic Solid**

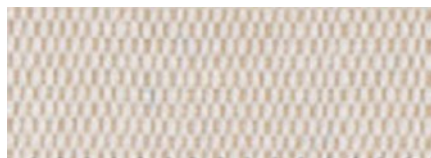


**782/14 Beige Classic Solid**



**15 White**

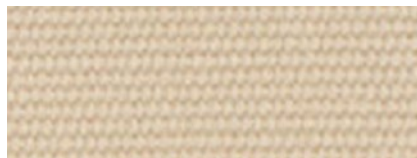




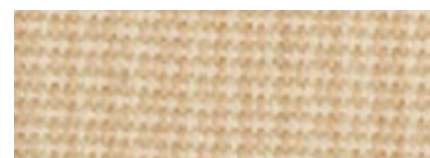
**15/14 Raw**



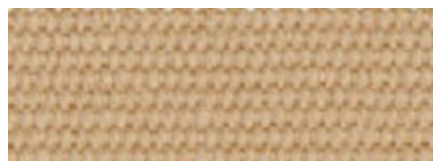
**4015/91 Raw Speckled**



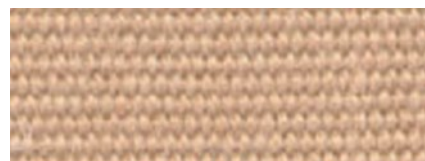
**15/1 Beige**



**4215/15 Textured Tan**



**52 Tan**



**14 Toast**



**12 Yellow**



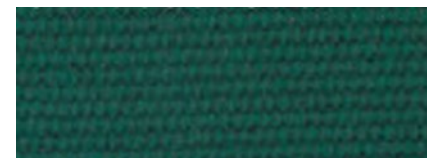
**53 Pale Peach**



**1302 Sage Tweed**



**7 Moss Green**



**5 Forest Green**



**407/6 Green Tweed**



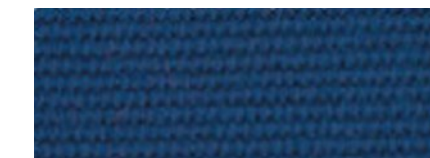
**8 Medium Green**



**13 Ocean Blue**



**407/13 Blue Tweed**



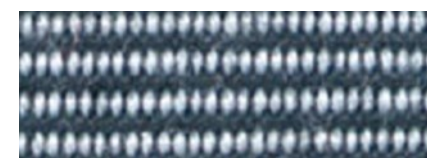
**75 Navy Blue**



**87 Fancy Blue**



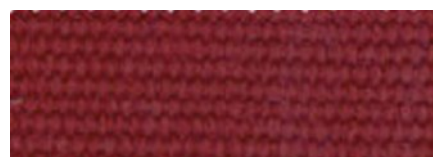
**79 Grey**



**407/79 Pepper Grey**



**15/79 Stone**



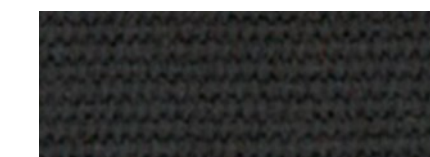
**84 Dark Terracotta**



**426 Terracotta**



**11 Red**



**81 True Brown**



**73 Burgundy**



**407/11 Burgundy Tweed**



**24 Black**



**5374 Smoke / Grey Stripe**



**5370 Beige / Grey**



**35 Red / White**



**33 Forest Green / White**



**37 Yellow / White**



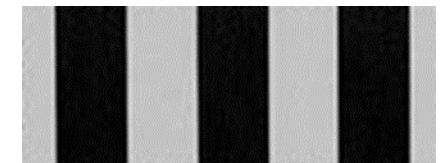
**47 Brown / Stone**



**969 Grey Fancy Stripe**



**242 Grey / White**



**68 Black / Grey**



**439 Dark Grey / White**



**809 Cream / Green**



**878 Beige / White Speckled**



**116/15 Medium Blue / White**



**931 Green / Cream Wide**



**5347/58 Grey Wheat Multi**



**5348/58 Beige / Wheat Multi**



**5349/930 Beige  
/ Brown Classic**



**636/14 Brown Elite Stripe**



**945/97 Beige Elite Stripe**



**946/58 Beige / Grey Classic**

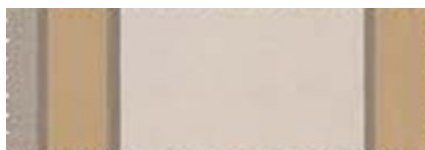


**947/14 Pale / Beige Classic**





**949/91 Brown / Beige Classic**



**959/14 Beige / Toast Elite**



**959/84 Beige / Brick Elite**



**5001/73 Burg/Grey Graduated**



**1101 Beige / Stripe Fancy**



**636/84 Terracotta Graduated**



**639/99 Tan / Natural Fancy**



**1120 Brown/ Beige Fancy**



**5009/1 Beige / Tan Stripe**



**5009/14 Brown / Tan Stripe**



**5011/57 Tan / Brown Fancy**



**5072/86 Brown/Stone Fancy**



**5144/14 Pastel/Natural Fancy**



**635/11 Cranberry/Natural F.**



**5011/11 Brick/Natural Fancy**



**5167/11 Red / Grey Fancy**



**5304/15 Rose / Grey Fancy**



**5173/12 Yellow / Grey Stripe**



**636/12 Yellow Graduated**



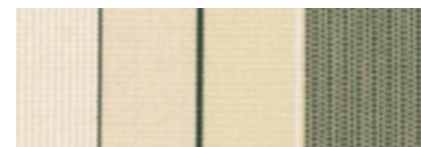
**5118/62 Yellow / White Fancy**



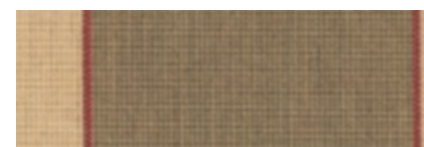
**5009/12 Gold / Tan Stripe**



**1150 Rust / Green Multi**



**5349/5 Natural/Green Classic**



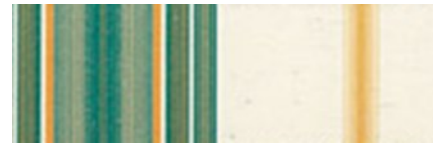
**5368/106 Toast/Grey / Rust**



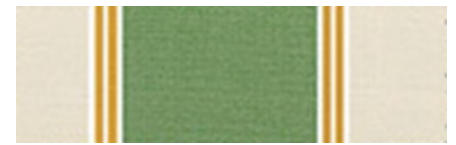
**940/5 Green Elite Stripe**



**764/62 Green / Tweed Fancy**



**774/62 Green / Speckled Fancy**



**739/701 Sage / Beige Fancy**



**634/97 Green / Tan Fancy**



**635/8 Green / Stone Fancy**



**636/5 Green / Beige Fancy**



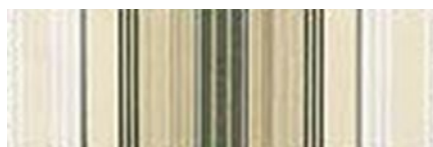
**638/5 Green Grey Fancy**



**5001/1 Green Graduated**



**5001/7 Moss Graduated**



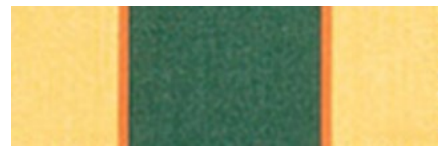
**5011/7 Tan / Green Fancy**



**5071/7 Natural/Moss Graduated**



**5167/5 Green / Grey Fancy**



**484/3 Green / Yellow Fancy**



**948/21 Pale / Blue Classic**



**951/92 Grey / Navy Classic**



**769/75 Cream / Blue Fancy**



**5167/2 Blue / Grey Fancy**



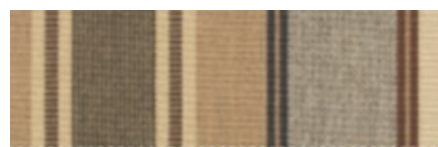
**636/10 Grey / Blue Graduated**



**641/10 Blue / Beige Fancy**



**5001/13 Blue Graduated**



**5348/14 Beige / Grey Multi**



**5348/79 Grey / Slate Multi**



**939/79 Yellow / Grey Elite**





**939/94 Grey Elite Stripe**



**950/24 Grey / Charcoal Classic**



**967/926 Grey/Charcoal Elite**



**634/51 Grey / Natural Fancy**



**633/79 Grey/ Black Fancy**



# Index Para / Tempotest Sunair Fabric collection

**SOLIDS • TWEEDS • BLOCK STRIPES • FANCY STRIPES • GRADUATED STRIPES**

Pattern	Description	Pattern	Description	Pattern	Description
101	Elite Toast	407/11	Burgundy Tweed	5118/62	Yellow/White Fancy
102	Cappuccino	24	Black	5009/12	Gold/Tan Stripe
106	Toffee	5374	Smoke / Grey Stripe	1150	Rust / Green Multi
986/15	Textured Lt. Grey	5370	Beige / Grey	5349/5	Natural / Green Classic
727/15	Textured Med. Grey	35	Red / White	5368/106	Toast / Grey / Rust
107	Textured Dk. Grey	33	Forest Green / White	940/5	Green Elite Stripe
986/106	Textured Beige	37	Yellow / White	764/62	Green /Tweed Fancy
873/2	Textured Cocoa	47	Brown / Stone	774/62	Green / Speckled Fancy
97/84	Plum	969	Grey Fancy Stripe	739/701	Sage / Beige Fancy
407/3	Green Classic Tweed	242	Grey / White	634/97	Green / Tan Fancy
407/16	Moss Classic Tweed	68	Black / Grey	635/8	Green / Stone Fancy
407/14	Toast Classic Tweed	439	Dark Grey / White	636/5	Green/ Beige Fancy
407/926	Grey Classic Tweed	809	Cream / Green	638/5	Green / Grey Fancy
926	Taupe Classic Solid	878	Beige / White Speckled	5001/1	Green Graduated
782/14	Beige Classic Solid	116/15	Medium Blue / White	5001/7	Moss Graduated
15	White	931	Green / Cream Wide	5011/7	Tan / Green Fancy
15/14	Raw	5347/58	Grey / Wheat Multi	5071/7	Natural / Moss Graduated
4015/91	Raw Speckled	5348/58	Beige / Wheat Multi	5167/5	Green / Grey Fancy
15/1	Beige	5349/930	Beige / Brown Classic	484/3	Green / Yellow Fancy
4215/15	Textured Tan	636/14	Brown Elite Stripe	948/21	Pale / Blue Classic
52	Tan	945/97	Beige Elite Stripe	951/92	Grey / Navy Classic
14	Toast	946/58	Beige / Grey Classic	769/75	Cream / Blue Fancy
12	Yellow	947/14	Pale / Beige Classic	5167/2	Blue / Grey Fancy
53	Pale Peach	949/91	Brown / Beige Classic	636/10	Grey / Blue Graduated
1302	Sage Tweed	959/14	Beige / Toast Elite	641/10	Blue / Beige Fancy
7	Moss Green	959/84	Beige / Brick Elite	5001/13	Blue Graduated
5	Forrest Green	5001/73	Burgundy / Grey Graduated	5348/14	Beige / Grey Multi
407/6	Green Tweed	1101	Beige / Stripe Fancy	5348/79	Grey / Slate Multi
8	Medium Green	636/84	Terracotta Graduated	939/79	Yellow / Grey Elite
13	Ocean Blue	639/99	Tan / Natural Fancy	939/94	Grey Elite Stripe
407/13	Blue Tweed	1120	Brown / Beige Fancy	950/24	Grey / Charcoal Classic
75	Navy Blue	5009/1	Beige / Tan Stripe	967/926	Grey / Charcoal Elite
87	Fancy Blue	5009/14	Brown / Tan Stripe	634/51	Grey / Natural Fancy
79	Grey	5011/57	Tan / Brown Fancy	633/79	Grey / Black Fancy
407/79	Pepper Grey	5072/86	Brown / Stone Fancy		
15/79	Stone	5144/14	Pastel / Natural Fancy		
84	Dark Terracotta	635/11	Cranberry / Natural Fancy		
426	Terracotta	5011/11	Brick / Natural Fancy		
11	Red	5167/11	Red / Grey Fancy		
81	True Brown	5304/15	Rose / Grey Fancy		
73	Burgundy	5173/12	Yellow / Grey Stripe		
		636/12	Yellow Graduated		

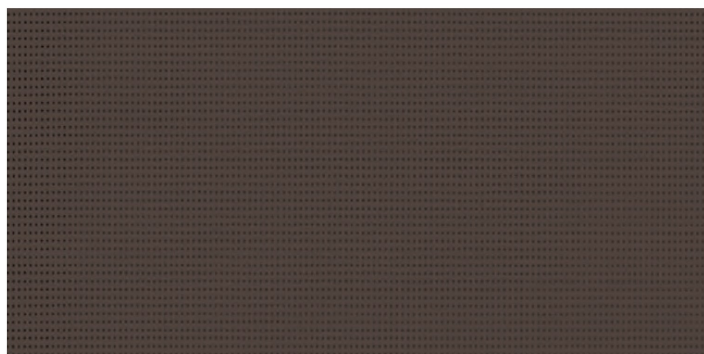


**Soltis**  
Horizon 86

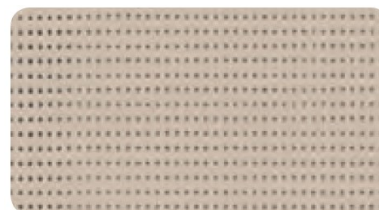
**Serge Ferrari**

14 % Open Screen Mesh

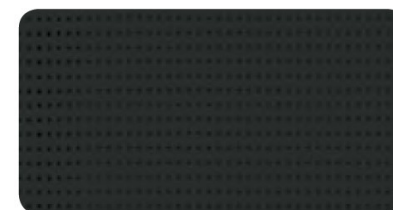
Exterior Screen Fabric



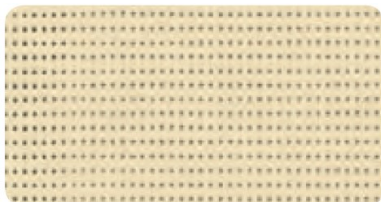
86-2043  
Bronze



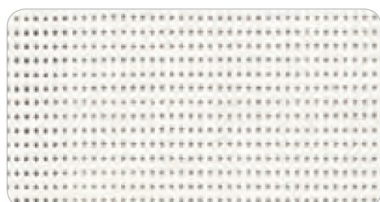
86 – 2135  
Sandy Beige



86 – 2053  
Black



86 – 2175  
Champagne



86 – 2044  
White



86 – 2012  
Pepper



86 – 2171  
Boulder

■ **Technical properties**

Openess factor	14%
Weight	380 g/m <sup>2</sup> — 11.2 oz/sqyd
Thickness	0.45 mm — 450 microns
Width	177 cm - 267 cm — 69.7 in. - 105.1 in.

Superior elongation and tear resistance

No deformation during processing and use

Superior aesthetic and mechanical durability

Smooth finish easy to clean, space saving, easy rolling



# MOTORIZATION & AUTOMATION



Awnings



Exterior Screens



Pergolas



Roller/Solar Shades

Sunair is proud to offer the full line of Somfy motors and controls for our awnings and screens program SOMFY RTS features motors with an integrated radio receiver that allows you to operate the awning by remote control with a wall mounted or hand held remote or by smart phone device. With a simple click of a button on your remote, the awning or shade will extend or retract automatically. The Altus motors is ideal for the Solharo system.



ALTUS®



## AVAILABLE BATTERY OPERATED REMOTES



Telis 1 & 4 RTS  
Hand-held Remotes



Telis 16 RTS  
Hand-held Remote

**One (1) through (16) channel hand held or wall mounted remotes are available. Remotes are available in different colors to suit your style, please inquire.**

Telis hand-held remotes offer convenient and simple operation of every type of motorized application. Channels help organize the motorized products that are operated. Single channel remotes can operate one individual product or one group of motorized products. Multiple channel remotes can handle groups of motorized products.



Telis 1 Chronis  
RTS Timer



DecoFlex WireFree™ RTS  
Wall Switches



Telis 1 Patio for  
exterior use



Smoove® 1 RTS  
Surface Mount Wall Switch



# AVAILABLE SENSORS & CONTROLS



## **EOLIS 3D WIREFREE™ RTS**

### **Wind sensor for lateral Arm Awnings only**

The Eolis 3D WireFree™ RTS Wind Sensor is a wireless, battery powered wind sensor that will automatically retract an awning based on wind generated movements.



## **SOLIRIS RTS 24V KIT**

### **Sun & Wind Sensor**

The Soliris RTS Sun and Wind Sensor automatically controls your RTS motorized products based on current weather conditions.



## **ONDEIS® WIREFREE**

### **Sun & Rain Sensor**

The Rain Sensor is a solar-powered combined rain and sun sensor compatible with Radio Technology Somfy® motorized exterior products, including awnings and screens.

The Somfy myLink™ is a simple device that turns your smartphone or tablet into a sophisticated remote control for motorized products featuring Radio Technology Somfy®, allowing you to operate them whether you're home or not. Combine all the benefits of Somfy's RTS hand-held remotes and timers in a convenient app.



### **Sunis & ThermoSunis Indoor WireFree™ RTS Sensors**



**Radio Technology Somfy**

Radio Technology Somfy® (RTS) allows wireless radio control of motorized applications via the RTS family of controls.

# SOMFY MOTOR WIRING

The three (3) wire cords can be wired in parallel . If a hard-wire motor is ordered, the standard four (4) wire cords must be wired with a traditional toggle wall switch. Solharo **can** not be ordered with molded plugs on the end.

## All Somfy Motors are UL and CSA Recognized

- All SOMFY motors are UL Recognized and can be found under the following file numbers:

E60495, E60888, E63714



## Type of power cable

RTS plug in capable motor cord

**RTS**  
120V AC / 60Hz  
**3 conductor cable**



white = neutral  
black = hot  
green = ground

## Type of power cable

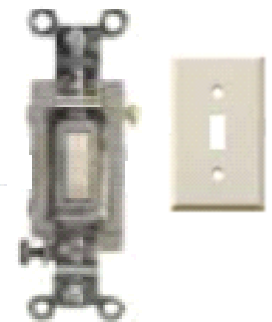
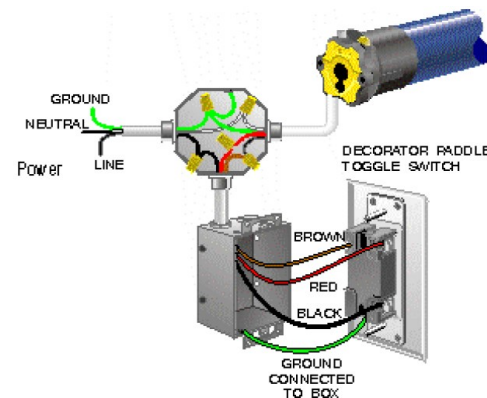
Hardwire motor cord

**Wired**  
120V AC / 60Hz  
**4 conductor cable**

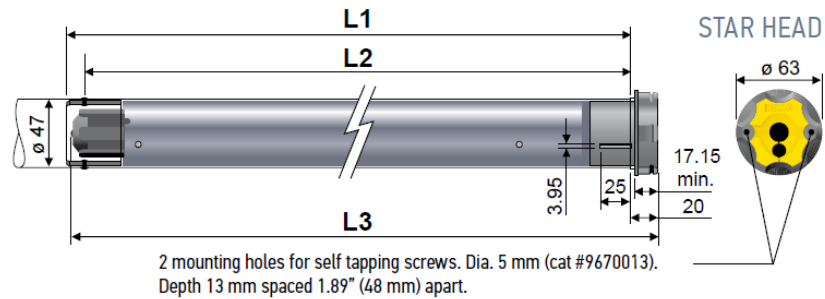


white = neutral  
red = direction 1  
black = direction 2  
green = ground

**Hardwired motors with a wall switch**



## Dimensions

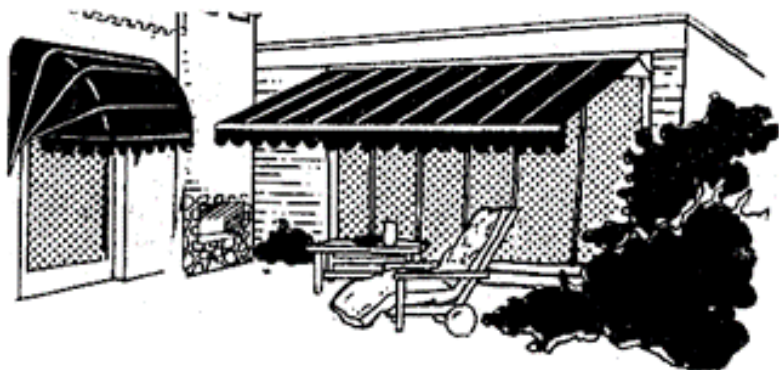


## LT50 Altus® RTS

506	510	525	535	550
6 Nm	10 Nm	25 Nm	35 Nm	50 Nm
120V / 60HZ	120V / 60HZ	120V / 60HZ	120V / 60HZ	120V / 60HZ
1.1A	1.3A	1.6A	2.1A	2.1A
38 rpm	38 rpm	20 rpm	20 rpm	14 rpm

# Notes

**Note: Sunair® reserves the right to change engineering, specifications, and prices without notice.  
Images and Illustrations in the catalog may vary from digital and printed manuals.**



***SUNPROOFING AMERICA!***



**MARYLAND LOCATION**

Mailing: P.O. Box 1068  
Shipping: 7785 Rt. 175  
Jessup, MD 20794

Toll Free    800 - 548 - 0408  
Phone:       410 - 799 - 1145  
Fax:          410 - 799 - 5584

**ARIZONA LOCATION**

Mailing: Same as Jessup  
Shipping: 3807 West Thomas Rd.  
Phoenix, AZ 85017

Toll Free    877 - 272 - 3920  
Phone:       602 - 272 - 3920  
Fax:          602 - 272 - 3925

**[www.sunairawnings.com](http://www.sunairawnings.com)**

**[info@sunairawnings.com](mailto:info@sunairawnings.com)**