



ISC6000 Interior shades

The ISC6000 is a vertical rolling interior shade system. The 6000 shade is operated by a manual chain drive as standard with optional motorized operation. Motorized control is an option with either a ultra quiet Sonesse 30 battery operated radio controlled motor or 404 Sonesse RTS Altus motor. Available with an optional fascia covering of 3" & 4" depending on height of the screen.

| Type | Standard Frame Colors | Standard Widths | Standard Heights | Recommended Applications | Recommended Fabrics |
|---------|--|----------------------------|-------------------------------------|--|--|
| ISC6000 | White, Anodized Silver & Black, Bronze, Vanilla | Up to 11' 10' max chain | Up to 14' Dependent on fabric | Residential & Commercial Windows | Mermet E screen & Avila Other fabrics special order |

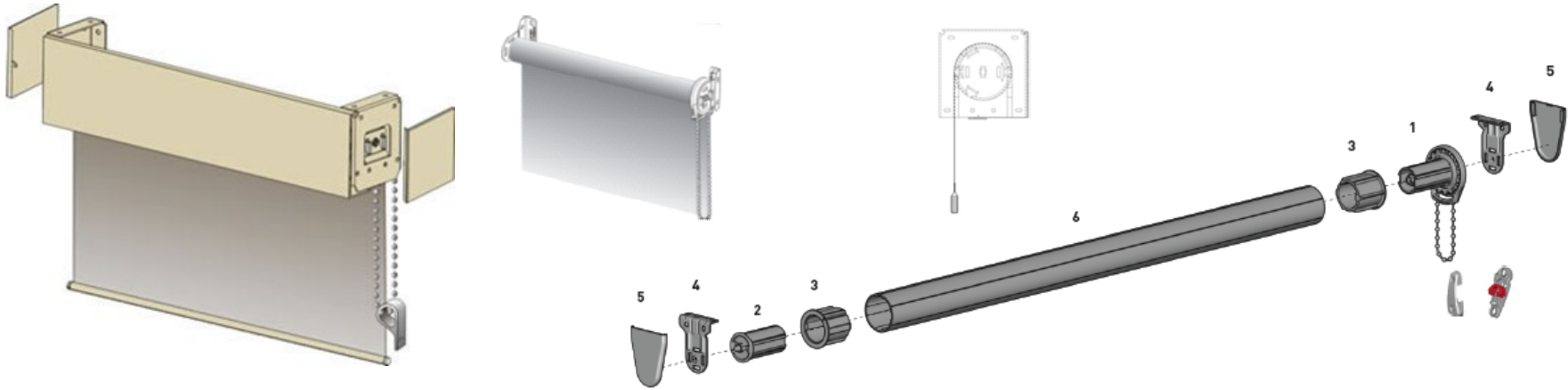
- The R screen is the original Rollease clutch system. With 3" or 4" straight fascia.
- Minimal light gaps.
- Ideal for both residential and commercial applications.
- Chain operated or optional motorized operation.
- Available with Sonesse 30 Ultra quiet RTS Battery motor operation or 404 Altus hardwire Motors.



REVISED 02/15/2023

ISC6000 Interior screen

STANDARD CHAIN OPERATED SHADE



OPTIONAL FASCIA:

Max screen height 3" Fascia is 8 ft.
Max screen height 4" Fascia is 14 ft.

OPERATION:

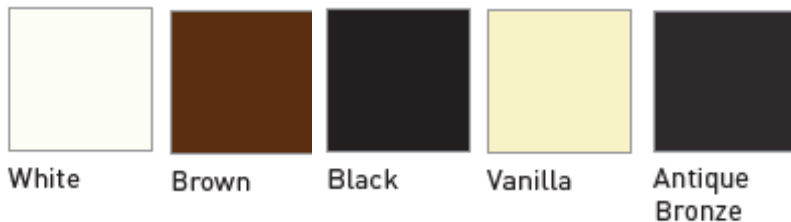
Standard chain operated.
Optional: Somfy Altus 404 motor &
Sonesse battery motor.

CHAIN COLORS:

PLASTIC: Brown, White

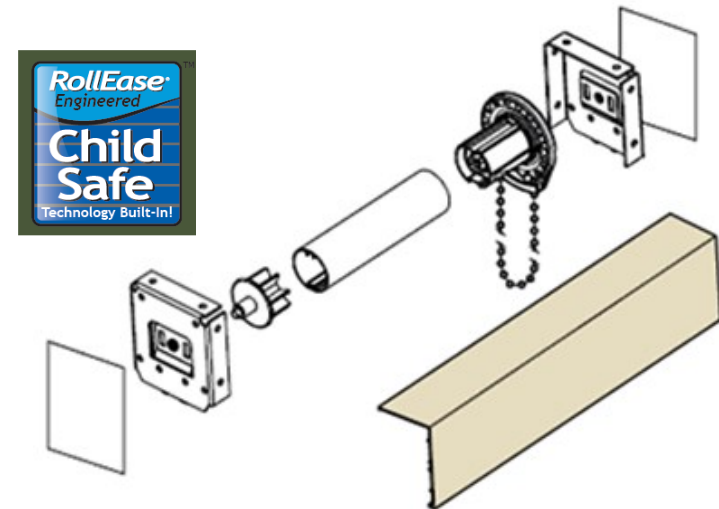
METAL: Nickel Plated Optional Stainless & Copper

AVAILABLE FASCIA & FRAME COLORS



Standard hem bar
welded into fabric

OPTIONAL SQUARE 3" & 4" FASCIA

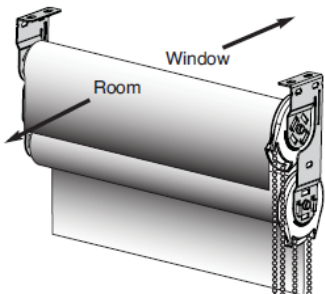


SafetyHold3™
Bead Chain or Cord Loop Tension Device

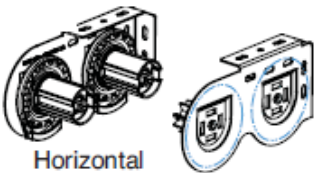


OPTIONAL:

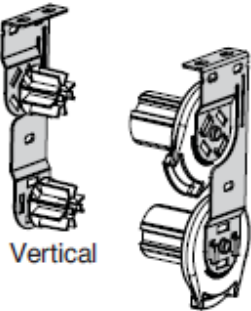
Please inquire with Sunair Office for a special quote.



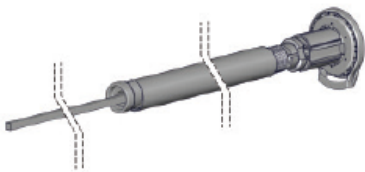
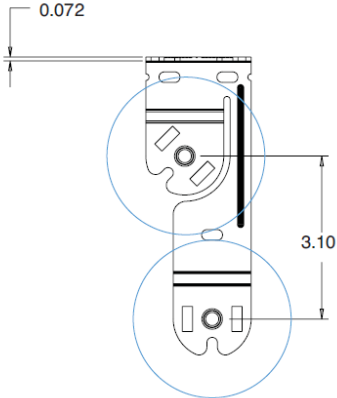
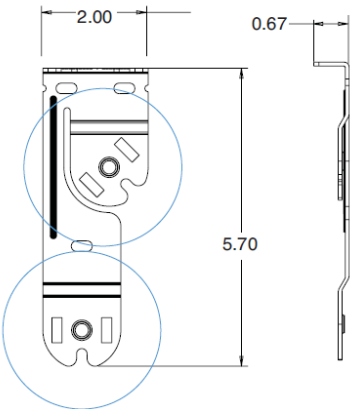
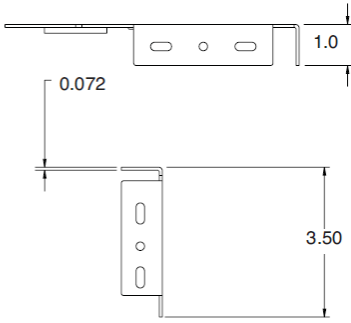
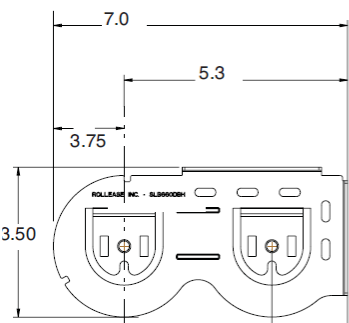
DUO SHADE



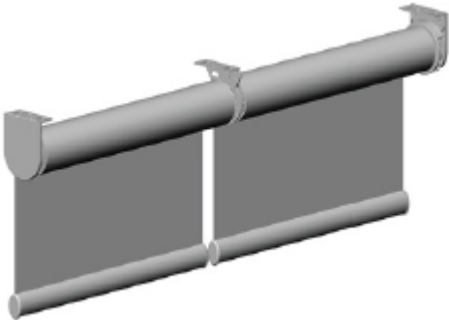
Horizontal



Vertical



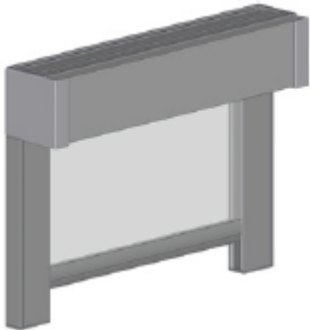
SPRING ASSIST



JOINED SHADES



ROUND COVER



BLACK OUT TRACKS



ISC7000 Interior shades

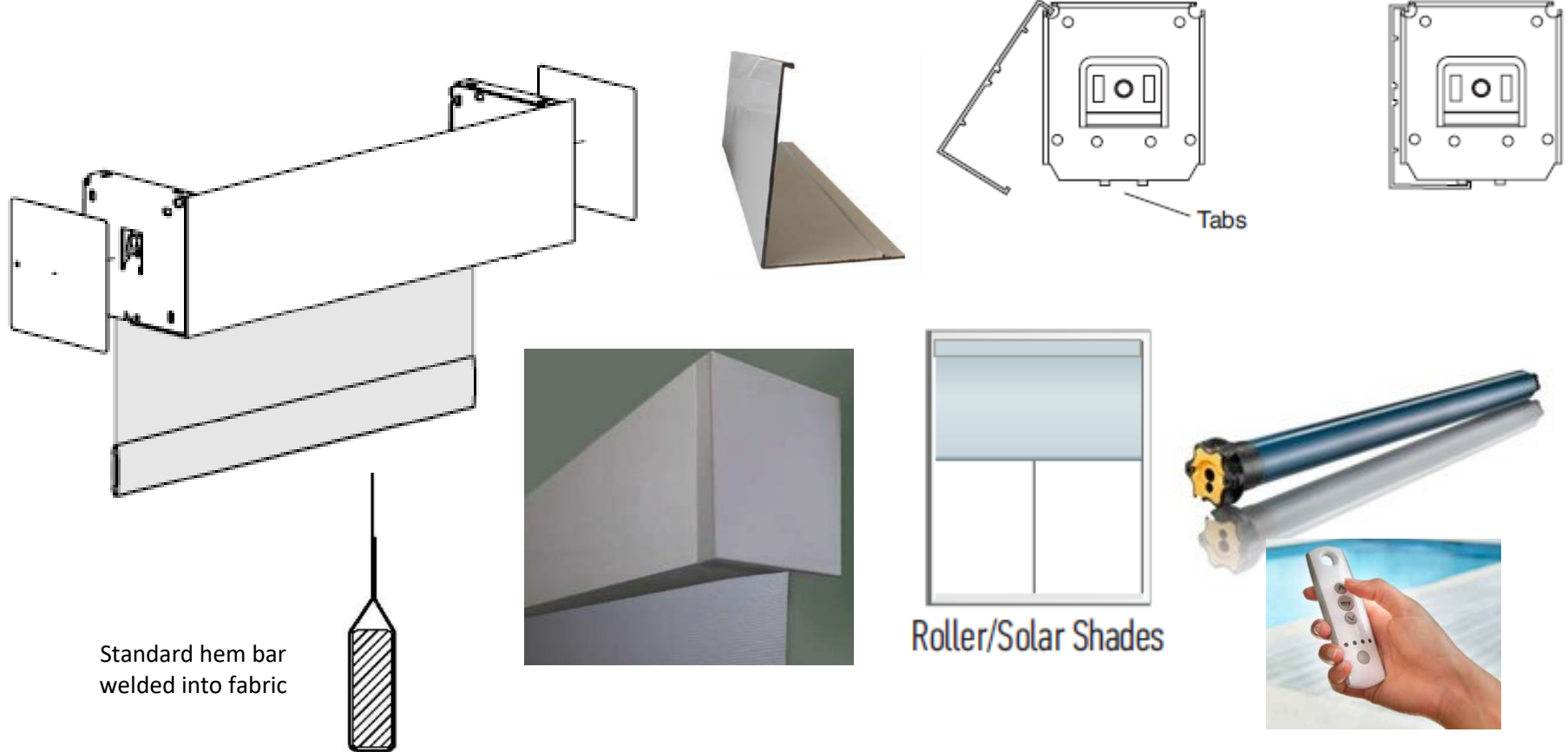
The ISC7000 is a vertical rolling interior shade system. The 7000 is standard with motorized operation. Available with an optional fascia covering of 4". Motorized units available with hard wired radio controlled 500 series RTS Altus motor.

| Type | Standard Frame Colors | Standard Widths | Standard Heights | Recommended Applications | Recommended Fabrics |
|---------|--|-----------------------------|----------------------------------|--|---|
| ISC7000 | White, Anodized Silver & Bronze, Vanilla | Up to 14' 24' with split | Up to 14' Dependent on fabric | Residential & Commercial Windows | Mermet E screen & Avila Other fabrics special order |

- The R screen is the original Rollease interior screen system.
- Minimal light gaps.
- Ideal for both residential and commercial applications.
- Available with motorized operation using Somfy 500 series LT50 RTS Altus hardwire Motors.
- Easy installation



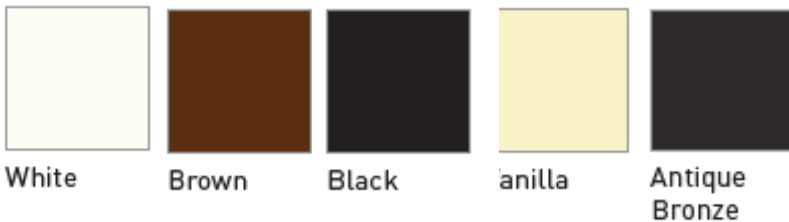
ISC7000 Interior screen



Standard hem bar
welded into fabric

Roller/Solar Shades

AVAILABLE FASCIA COLORS



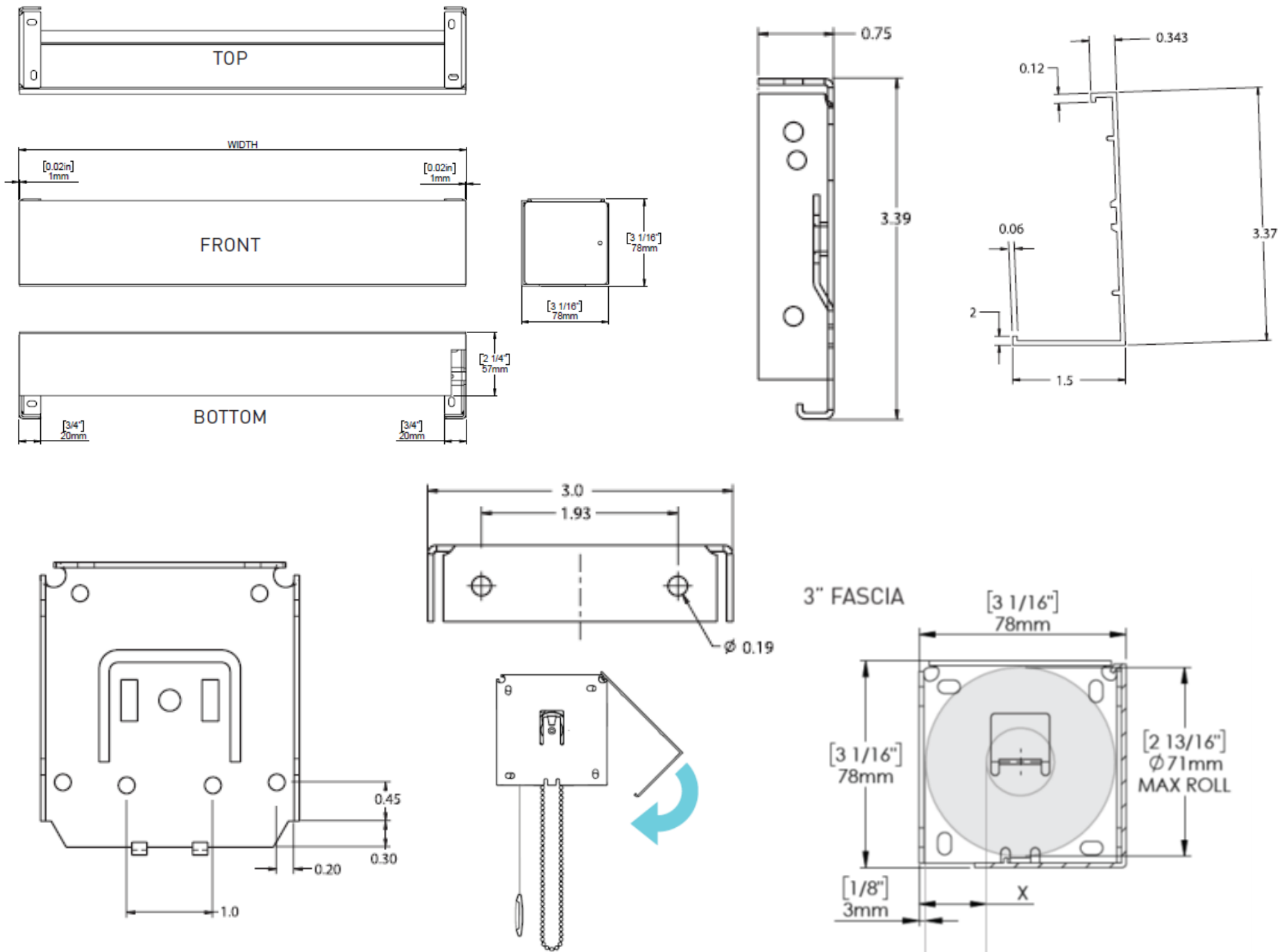
OPTIONAL FASCIA:

Max screen height 4" Fascia is 14 ft.

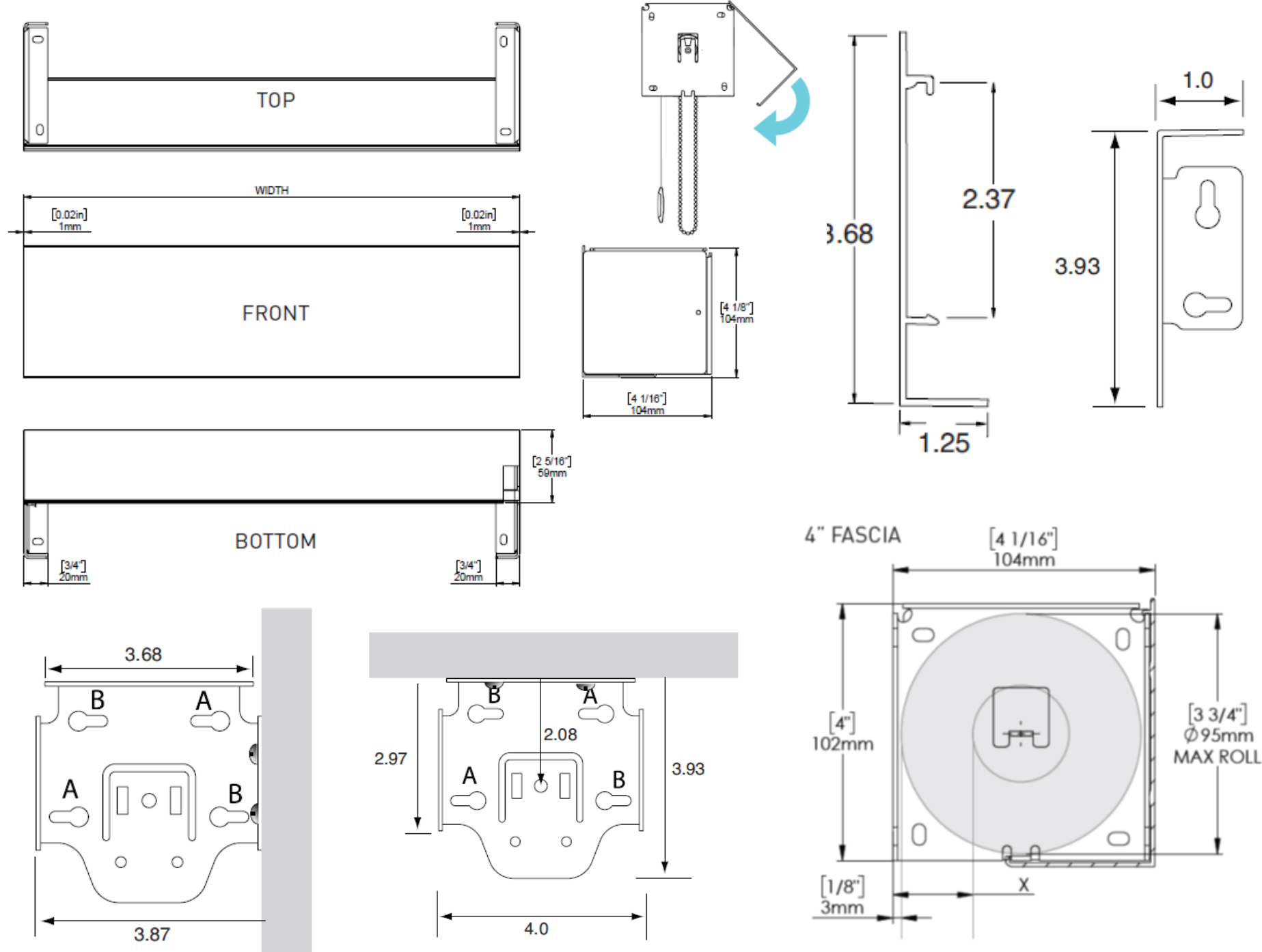
OPERATION:

Standard motorized with Somfy LT50 Hardwire RTS Altus motor (Remote additional).

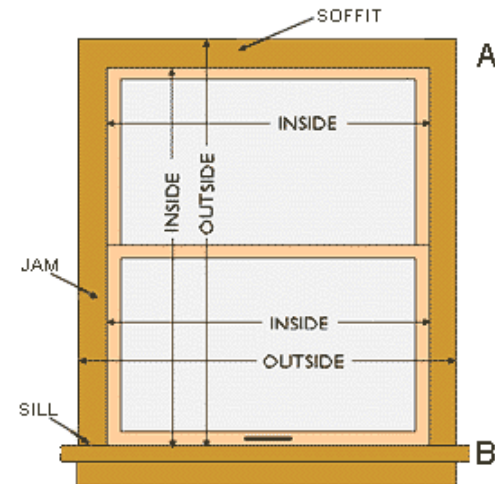
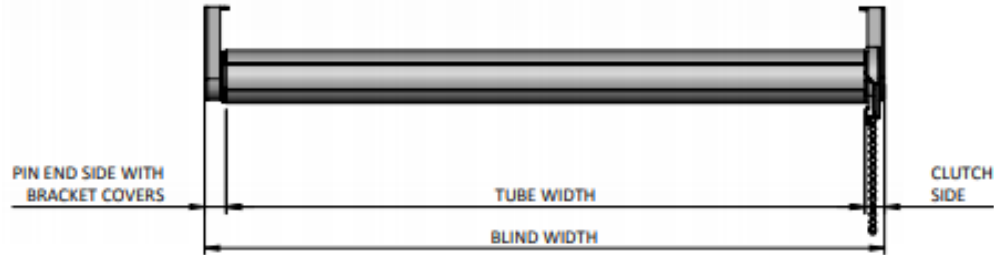
3" FASCIA



4" FASCIA

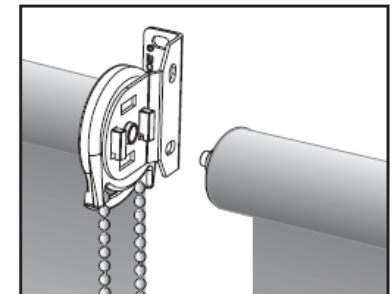
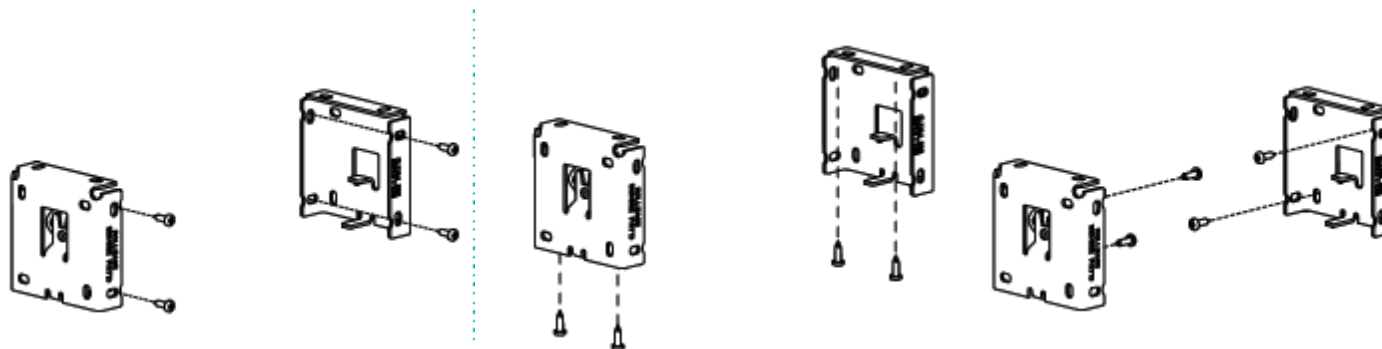


MEASURING ISC6000 & 7000:



Width: All widths must be submitted to the factory as finished sizes. No factory deductions will be made. Shades are manufactured with measurements “outside of bracket” to “outside of bracket”. If fascia is ordered, the fascia will be cut the width of the brackets as well. The plastic end caps that are added on each for a finished look will add about 1/8” on each side to the width. If you are mounting between columns that protrude, the end caps are not needed. So, make sure you deduct enough on the width of the screen to accommodate the extra 1/8” on each side for the beauty cap if needed and used. The bracket you will receive will depend on if the shade has fascia or not, and what size fascia if ordered.

Height: The height of the screen you order will be from the top of the roller assembly to the bottom of the internal hem weight bar when the shade is lowered.



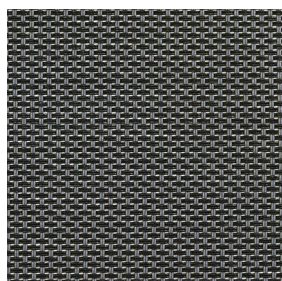
Note: If sharing a bracket between two shades, bracket can only be shared by a clutch and a pin end, not a clutch-to-clutch or pin end to pin end.



E Screen

Interior Screen Fabric

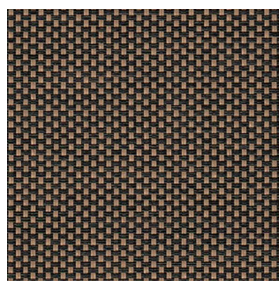
Conventional | 1% 3% 5% 10% openness



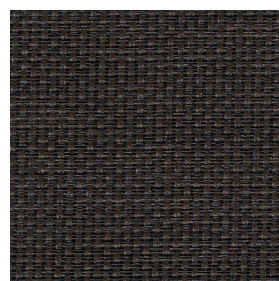
Charcoal / Grey



Charcoal / Charcoal



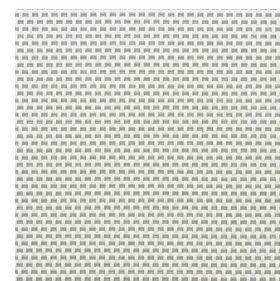
Charcoal / Apricot



Charcoal / Cocoa



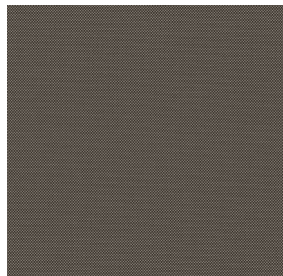
White / Linen



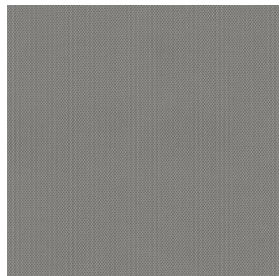
White / Pearl



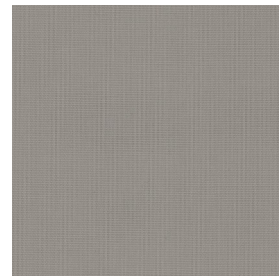
White / White



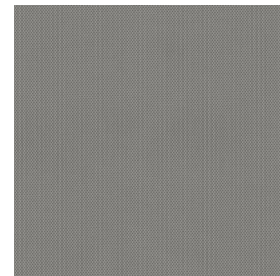
Charcoal Grey
/ Stone



Pearl / Linen



Pearl / Pearl



Pearl / Grey

Product Specifications Sheet



AVILA Twilight



Interior Screen Fabric / 0% open

Privacy and Black out

Fire rated for residential applications

000060
Black

000050
Graphite

000001
Pewter

000018
Ash

000012
Frost

000016
Chalk

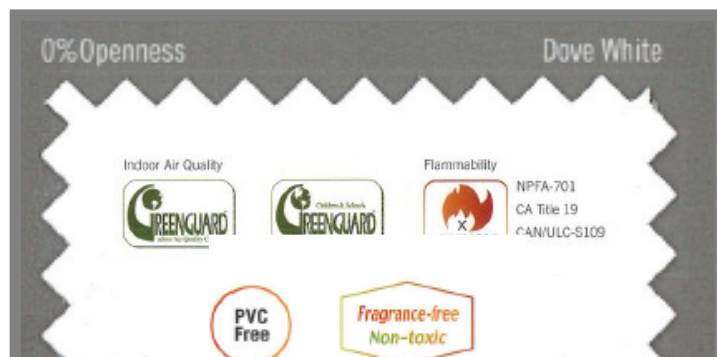
000020
Linen

000017
Canvas

000002
White

SierraSol

SPECIAL ORDER FABRIC Blackout Fabric



Mesa

Interior B/O Fabric

SPECIAL ORDER /
QUOTE

FENESTRATION PROPERTIES

SHADING COEFFICIENT

| Mesa | Ts | Rs | As | Tv | 1/8" C/L | 1/4" C/L | 1/4" H.A. |
|------------|----|----|----|----|----------|----------|-----------|
| Dove White | 0 | 76 | 24 | 0 | 0.22 | 0.23 | 0.26 |

*Similar fenestration data achieved for all other colors

SPECIFICATIONS

| | |
|-----------------|--|
| Series | SierraSol Mesa |
| Composition | 100% Polyester with Acrylic Foam Backing (PVC-Free) |
| Openness Factor | Opaque |
| Weight | 9.4 oz/yd ² (320 g/m ²) +/-5% |
| Thickness | 0.022 in (.55mm) +/-5% |
| Colorfastness | Grade 6-7 |
| Standard width | 98.4" (2.5m) and 118" (3m) |
| Standard length | 27yd/roll (25m) |





SOMFY HARDWIRE MOTOR WIRING



Radio Technology Somfy

Radio Technology Somfy® (RTS) allows wireless radio control of motorized applications via the RTS family of controls.



All Somfy Motors are UL and CSA Recognized

- All SOMFY motors are UL Recognized and can be found under the following file numbers:

E60495, E60888, E63714



The three (3) wire cords can be wired in parallel and can be ordered with a molded plug to simply plug into an exterior UL approved GFI outlet. The standard four (4) wire cords must be hard wired with a traditional toggle wall switch. Screens can not be ordered with molded plugs on the end.

Type of power cable **RTS plug in capable motor cord**

RTS
120V AC / 60Hz
3 conductor cable



white = neutral
black = hot
green = ground

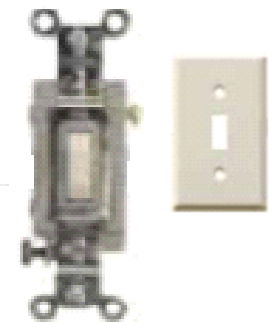
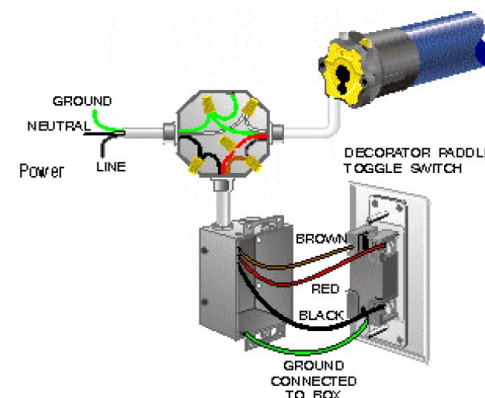
Type of power cable **STANDARD Hardwire motor cord**

Wired
120V AC / 60Hz
4 conductor cable



white = neutral
red = direction 1
black = direction 2
green = ground

Hardwired motors with a wall switch

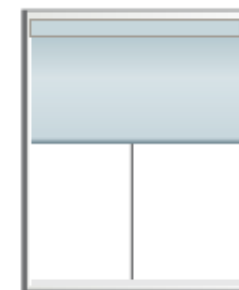


SONESSE® 30 WIREFREE (LI-ION) RTS

POWERED by
somfy



**SOMFY / Battery operated rechargeable motor
for interior roller shades (Ultra Quiet).**



Roller/Solar Shades

Interior Roller Shade Size:

Max 10 ft. wide x 8 ft High

Minimum width 28" with motor

Specifications

| | |
|-------------------------|----------------------|
| Voltage | 12V DC |
| Torque | 2 Nm |
| Sound Level | 44 dBA |
| Speed | 10-28 rpm adjustable |
| Low Battery Indicator | LED |
| Radio Frequency for RTS | 433.42 MHZ |

- Designed to perform quietly to enhance end-user experience.
- Built-in rechargeable lithium-ion battery minimizes maintenance and need to install and replace batteries.
- Great for interior roller shade applications ranging from small to larger window treatments.
- Ideal for areas where wiring is a challenge.
- Flexible speed and tilt power adjustments for optimal customization.
- Compatible with all Somfy remotes, My link, and Alexa Integration.



Somfy
DESIGNED FOR
SILENCE



SOMFY REMOTES:



Telis 1 & 4 RTS
Hand-held Remotes



Situo 1 & 4 hand
held remotes

One (1) through (16) channel hand held or wall mounted remotes are available. Remotes are available in different colors to suit your style, please inquire.



Telis hand-held remotes offer convenient and simple operation of every type of motorized application. Channels help organize the motorized products that are operated. Single channel remotes can operate one individual product or one group of motorized products. Multiple channel remotes can handle groups of motorized products.



Telis 1 Chronis
RTS Timer



DecoFlex WireFree™ RTS
Wall Switches



Telis 1 Patio for
exterior use



Smoove® 1 RTS
Surface Mount Wall Switch



Telis 16 RTS
Hand-held Remote

AVAILABLE AUTOMATIC SENSORS & CONTROLS



Sunis & ThermoSunis
Indoor WireFree™ RTS Sensors

Somfy TaHoma® RTS Smartphone and Tablet Interface

The Somfy TaHoma® gateway and smart phone app provides convenient and customized control of Somfy powered motorized shades, blinds, and other motorized solutions. Control up to 40 RTS (Radio Technology Somfy) channels using the TaHoma app. Multiple TaHoma devices can be joined for multi-zone control.



- North America app, you can remotely activate both Zigbee and RTS products Supports UP/DOWN/MY/STOP commands for motorized shades/blinds .
- Supports incremental control for Tilt motors and lighting ? Supports ON/OFF commands for control of lighting or other devices powered via the Zigbee Smart Plug Multiple users .
- Remote access Control4® Certified ? Integration with third-party systems over IP ? Compatible with Somfy Synergy™ API



TaHoma® RTS



Bond Home / Smartphone and Tablet Interface

Bond Bridge and Bond Bridge Pro works as a bridge between Wi-Fi and your remotes recorded signal allowing you to operate your Sunair shades, awnings, pergolas, ceiling fans, fireplaces and more with the Bond app. Works with Somfy and other motor manufacturers.



Remote control from anywhere

Be able to control everything
even from outside your home.



Bond Bridge

- Works with Alexa, Google Home, and SmartThings,
- Remote Control via Bond Home app
- Works with iPhone or Android
- No installation needed
- Smart home functionality without breaking the bank

Bond Bridge Pro: **Added features...**

- Ethernet port & PoE technology
- Smart home integrations
- Ceiling and wall mount

OPTIONAL:

- Sidekick for Shades: 5-channel Shade and awning

BOND REMOTE SWITCH:

Sidekick for Shades/Awnings: 5-channel Shade Keypad

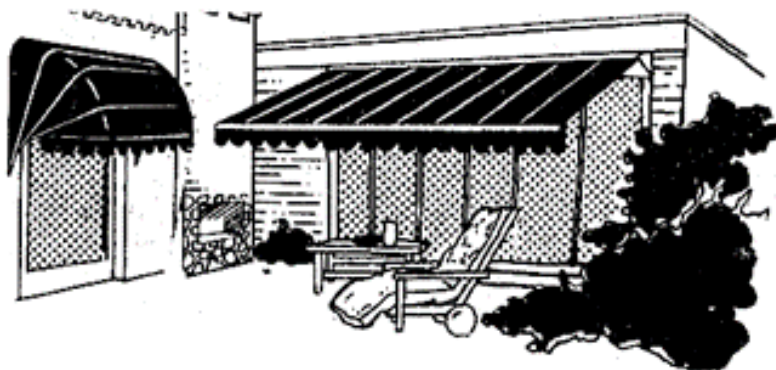


- Wireless flush mount shade remote.
- Communicates directly with the shade.
- 10-year battery life.
- Set up shade limits – no manufacturer remote required.
- This version of Sidekick does not support Scene Keypad functionality.
- 10-year battery life.
- Install with or without a workbox (flush mount).
- 5-channel control.
- Set up shade limits – no manufacturer remote required.



Notes

**Note: Sunair® reserves the right to change engineering, specifications and prices without notice.
Images and Illustrations in the catalog may vary from digital and printed manuals.**



SUNPROOFING AMERICA!



MARYLAND LOCATION

Mailing: P.O. Box 1068
Shipping: 7785 Rt. 175
Jessup, MD 20794

Toll Free 800 - 548 - 0408
Phone: 410 - 799 - 1145
Fax: 410 - 799 - 5584

ARIZONA LOCATION

Mailing: Same as Jessup
Shipping: 3807 West Thomas Rd.
Phoenix, AZ 85017

Toll Free 877 - 272 - 3920
Phone: 602 - 272 - 3920
Fax: 602 - 272 - 3925

www.sunairawnings.com

info@sunairawnings.com