

# PERGOLA® FRAME COLORS

Revised 03/14/19

The following pages are the available standard frame colors for each model Pergola Awning. The colors on the first page are the available standard frame colors for all Pergola models. The colors on the second page are additional colors available for the following Four (4) models including **Level, Mito, Tecnic & Tecnic One**. The wood stain colors on the third page are for the **Wood and Wood Plus models** for the wood elements. You will also need to pick a metal color for the aluminum components for

**Awnings Unlimited Inc.**

**7785 RT 175 Jessup, MD 20794**

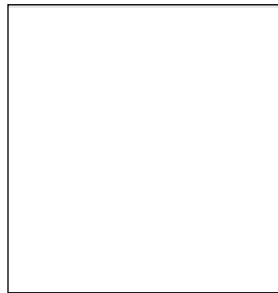
**800-548-0408**

[www.sunairawnings.com](http://www.sunairawnings.com)

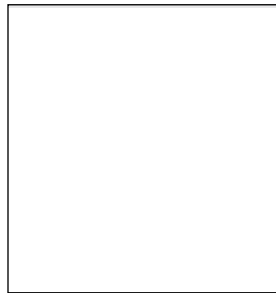


# STANDARD FRAME COLORS FOR ALL PERGOLA MODELS:

*NOTE: Optional for OPERA & VISION is to have Structure and louvers in two different colors.*



**WHITE Gloss**  
Ral 9010



**WHITE SAND**  
Coarse Ral 9016



**IVORY SAND**  
Ral 1013 Coarse



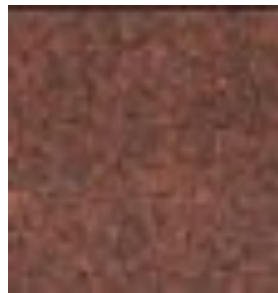
**IVORY / SEMI**  
Gloss Ral 1013



**GREY SAND**  
Gloss Ral 9006



**BRIGHT ALUM**  
Matt Ral 9006

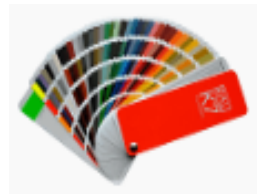


**CORTEN**  
Coarse

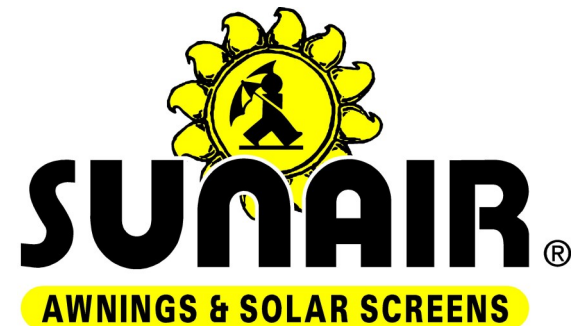


**IRON GREY**  
Coarse

**OPTIONAL**



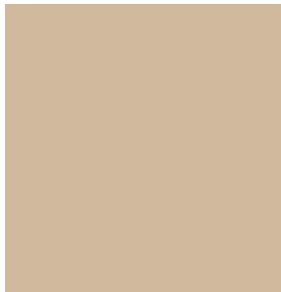
**FULL RAL COLOR**  
RANGE / EXTRA  
COST



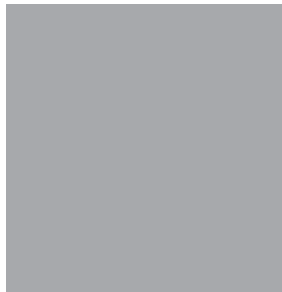
**NOTE:** ACTUAL FRAME COLOR MAY VARY FROM DIGITAL IMAGES

# OPTIONAL FRAME COLORS FOR THESE PERGOLA MODELS:

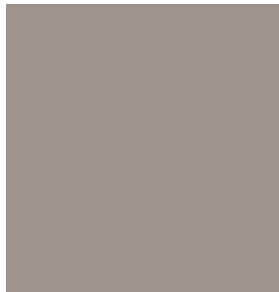
Four Models: *Level, Mito, Tecnic & Tecnic One*



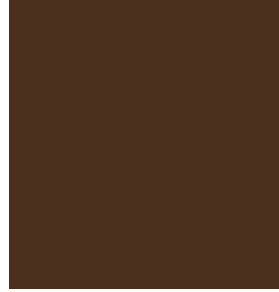
**MOCHA**  
Semi Gloss



**GREY Gloss**  
Ral 7040



**TAUPE Gloss**  
Ral 7030



**BROWN Gloss**  
Ral 8019



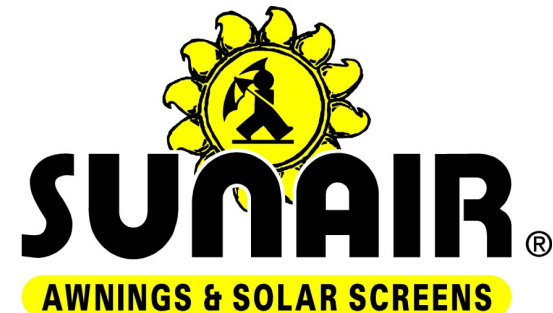
**BRONZE**  
Coarse



**BLACK Gloss**  
Ral 9005



**GREEN Gloss**  
Ral 6005



**NOTE:** ACTUAL FRAME COLOR MAY VARY FROM DIGITAL IMAGES

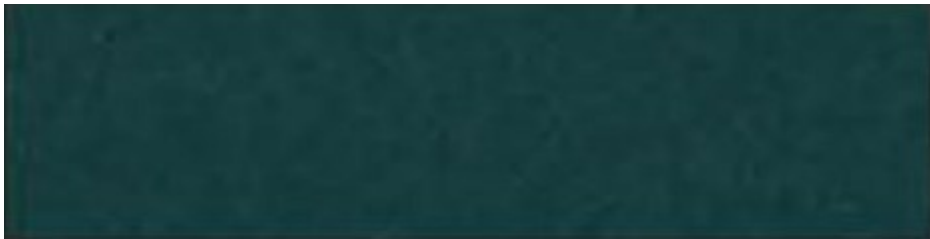
## WOOD PERGOLA COLORS / Wood portion



**MAHOGANY / STANDARD**



**BRENNERO WALNUT /  
OPTIONAL NON STANDARD**



**GREEN /  
OPTIONAL NON STANDARD**

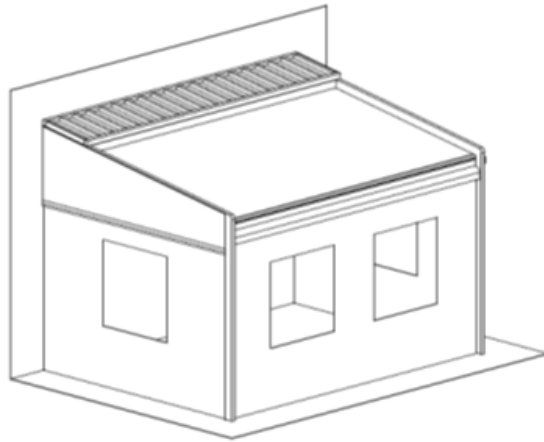


**IMPREGNATION /  
OPTIONAL NON STANDARD**

**NOTE: Wood & Wood Plus Pergola models also have metal parts which require a metal color finish as well.**



**Note: Sunair® reserves the right to change engineering, specifications and prices without notice. Images and Illustrations in the catalog may vary from digital and printed manuals. Sunair® is not responsible for printed inaccuracies in this manual.**



***SUNPROOFING AMERICA!***



### **MARYLAND LOCATION**

**Mailing: P.O. Box 1068**

**Shipping: 7785 Rt. 175**

**Jessup, MD 20794**

**Toll Free 800 - 548 - 0408**

**Phone: 410 - 799 - 1145**

**Fax: 410 - 799 - 5584**

### **ARIZONA LOCATION**

**Mailing: Same as Jessup**

**Shipping: 3807 West Thomas Rd.**

**Phoenix, AZ 85017**

**Toll Free 877 - 272 - 3920**

**Phone: 602 - 272 - 3920**

**Fax: 602 - 272 - 3925**

**[www.sunairawnings.com](http://www.sunairawnings.com)**

**[info@sunairawnings.com](mailto:info@sunairawnings.com)**