

Maxi & Combi Window Awning

Retractable drop arm window awning systems



A Maxi or Combi retractable window awning from Sunair® is the ideal solution for complete solar control and privacy in your home. The awnings can be lowered to any position to provide as little or as much sunlight as you want. With traditional awning flair, this modern mechanism is easy to operate, and eliminates seasonal removal and storage. When not in use, the fabric is rolled up and protected by an optional hood or cassette.

FEATURES:

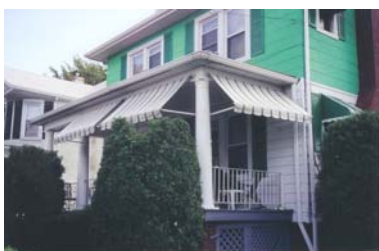
- Reduced Cooling costs.
- Filter or block sunlight & glare through window
- Fully retractable, eliminating seasonal storage of awnings.
- Can be lowered like a shade to create privacy
- Manual or motorized with remote control available
- Hundreds of fabric colors to choose from.
- Seven standard frame colors
- Custom frame colors available



**Awnings in normal
down position**



**Awnings lowered
160° for privacy**



COMBI & MINI

Sun protection for small windows. This spring loaded drop arm awning can be extended to any position down to 160 degrees. The Combi awning has a standard hood that protects the fabric. The mini does not come with a hood. Standard operation for both is with a pull-tape, and a motor or manual gear operation is optional.



Awning Style	Type	Standard Frame Colors	Standard Widths	Standard Projections	Recommend Application	Recommend Fabrics to Use
	Combi Small Window Awning	White, Ivory, Mocha, Brown, Bronze Grey, Taupe, Black Forest Green	Through 12'	2'4", 2'8", 3'0", 3'4"	Small Residential Windows	Para, Sunbrella, Sattler Dickson
	Mini Small Window Awning	White, Ivory, Mocha, Brown, Bronze Grey, Taupe, Black Forest Green	Through 10'	2'4", 2'8", 3'0", 3'4"	Small Residential Windows	Para, Sunbrella, Sattler Dickson

MEASURING:

The recommended width of the Combi/Mini is the window plus 6 – 8" on each side for proper coverage. The recommended projection is half the height of the window. The cassette housing is 3 ¼" high. The awnings can easily be mounted on to any type of wall or window casing. If mounting the awning on the casing or right above the window, make sure the window does not interfere with the awning when the window is opened. The Combi comes standard with pull tape, but can be operated with an optional hand crank or motor. Minimum width for standard motor is 2'3", and 3' minimum width for Altus RTS motor. The tape or standard pull string is most commonly mounted outside the wall, but can be mounted through the wall for inside operation. Check the wall to see if it is possible to drill through the wall (see sketch on back).

