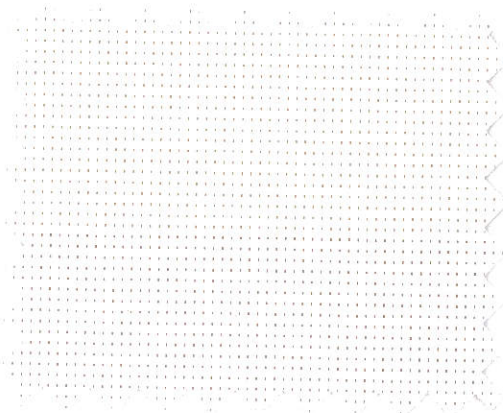


## 4000 NET

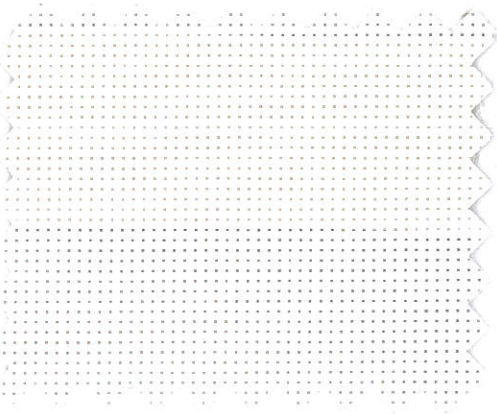
3% Openness

N001 White/White



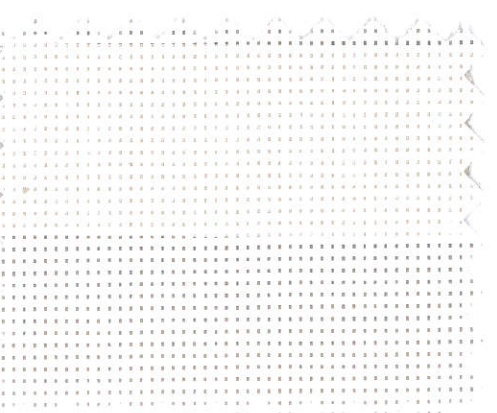
5% Openness

N001 White/White



10% Openness

N001 White/White



NPE1 Dove/Dove

N002 White/Beige

NPE2 Dove/Sand

N003 White/Gray

N091 Cream/Cream

N201 Beige/Beige

N202 Beige/Sable

N203 Beige/Gray

N301 Gray/Gray

N302 Gray/Dark Gray

N303 Gray/Blue Gray

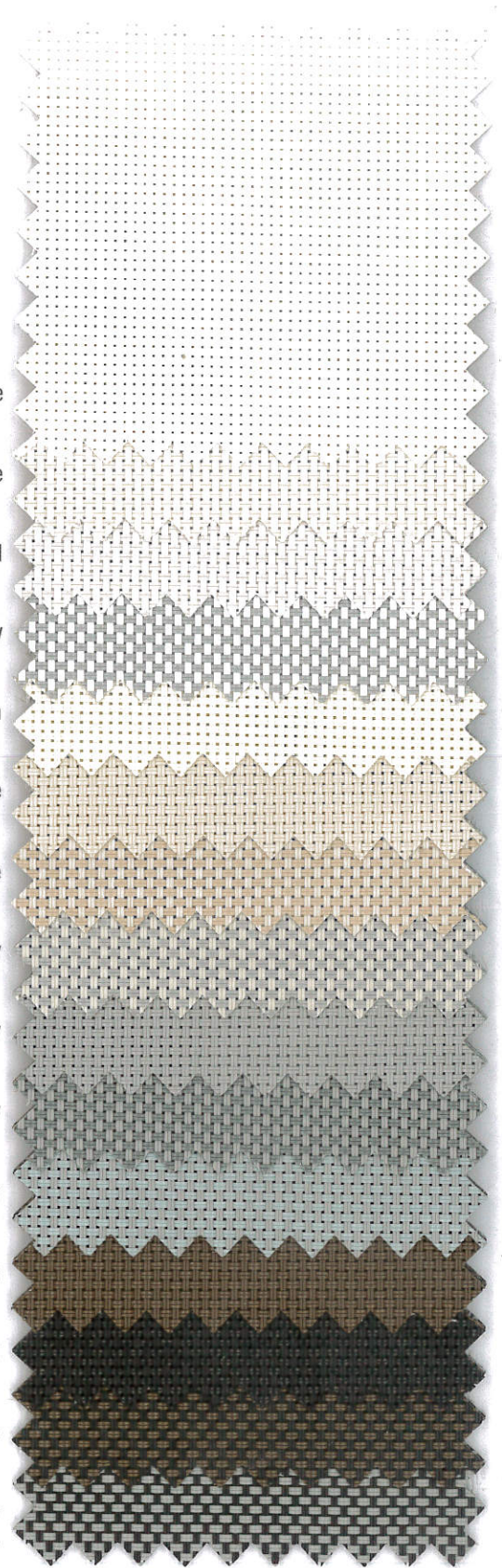
N801 Bronze/Bronze

N901 Charcoal/Charcoal

N902 Charcoal/Bronze

N903 Charcoal/Gray

Fabrics sampled on the right are 5% openness.

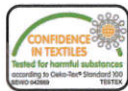


# SUNSHADOW®

## Solar Screen Fabric

### 4000 NET

Environment Friendly



Indoor Air Quality



Anti Bacteria



ASTM G21  
ASTM G22

Flammability



M1 B2  
B1 NFPA 701

Energy Saver



The solar optical properties are used to calculate the shading coefficient. The shading coefficient represents the percentage of solar heat gain that is transmitted to the interior through the glass and shading system. Darker colors provide maximum glare reduction and visibility. For complete technical information, current test results, performance specifications and larger samples, contact our Marketing Department.

#### FENESTRATION PROPERTIES

#### SHADING COEFFICIENT

| 4000 NET           |                        | Ts | Rs               | As | Tv   | 1/8" C/L | 1/4" C/L | 1/4" H.A. |
|--------------------|------------------------|----|------------------|----|------|----------|----------|-----------|
| 3%                 | N001 White/White       | 13 | 68               | 19 | 8    | 0.29     | 0.31     | 0.30      |
|                    | NPE1 Dove/Dove         | —  | data unavailable | —  | —    | —        | —        | —         |
|                    | N002 White/Beige       | 11 | 58               | 31 | 8    | 0.36     | 0.37     | 0.32      |
|                    | NPE2 Dove/Sand         | —  | data unavailable | —  | —    | —        | —        | —         |
|                    | N003 White/Gray        | 7  | 46               | 47 | 5    | 0.45     | 0.46     | 0.36      |
|                    | N201 Beige/Beige       | 11 | 52               | 37 | 6    | 0.42     | 0.41     | 0.35      |
|                    | N203 Beige/Gray        | 7  | 39               | 54 | 4    | 0.50     | 0.47     | 0.38      |
|                    | N901 Charcoal/Charcoal | 3  | 5                | 92 | 2    | 0.71     | 0.67     | 0.49      |
|                    | N902 Charcoal/Bronze   | 3  | 7                | 90 | 2    | 0.70     | 0.66     | 0.48      |
| 5%                 | N001 White/White       | 16 | 67               | 17 | 11   | 0.32     | 0.33     | 0.32      |
|                    | NPE1 Dove/Dove         | —  | data unavailable | —  | —    | —        | —        | —         |
|                    | N002 White/Beige       | 14 | 58               | 28 | 9    | 0.39     | 0.38     | 0.34      |
|                    | NPE2 Dove/Sand         | —  | data unavailable | —  | —    | —        | —        | —         |
|                    | N003 White/Gray        | 10 | 45               | 45 | 8    | 0.47     | 0.46     | 0.38      |
|                    | N091 Cream/Cram        | 16 | 66               | 18 | 11   | 0.34     | 0.34     | 0.32      |
|                    | N201 Beige/Beige       | 14 | 51               | 35 | 11   | 0.44     | 0.43     | 0.37      |
|                    | N202 Beige/Sable       | 12 | 47               | 41 | 9    | 0.46     | 0.45     | 0.38      |
|                    | N203 Beige/Gray        | 10 | 39               | 51 | 8    | 0.51     | 0.49     | 0.40      |
|                    | N301 Gray/Gray         | 8  | 31               | 61 | 7    | 0.56     | 0.54     | 0.43      |
|                    | N302 Gray/Dark Gray    | 8  | 23               | 69 | 8    | 0.62     | 0.59     | 0.45      |
|                    | N303 Gray/Blue Gray    | 8  | 27               | 65 | 7    | 0.60     | 0.57     | 0.42      |
|                    | N801 Bronze/Bronze     | 6  | 17               | 77 | 7    | 0.62     | 0.60     | 0.41      |
|                    | N901 Charcoal/Charcoal | 6  | 5                | 89 | 6    | 0.73     | 0.69     | 0.51      |
|                    | N902 Charcoal/Bronze   | 6  | 7                | 87 | 6    | 0.72     | 0.68     | 0.50      |
| N903 Charcoal/Gray | 6                      | 12 | 82               | 6  | 0.74 | 0.69     | 0.52     |           |
| 10%                | N001 White/White       | 24 | 61               | 15 | 15   | 0.33     | 0.35     | 0.33      |
|                    | NPE1 Dove/Dove         | —  | data unavailable | —  | —    | —        | —        | —         |
|                    | N002 White/Beige       | 21 | 53               | 26 | 13   | 0.41     | 0.40     | 0.37      |
|                    | NPE2 Dove/Sand         | —  | data unavailable | —  | —    | —        | —        | —         |
|                    | N003 White/Gray        | 18 | 39               | 43 | 12   | 0.49     | 0.48     | 0.40      |
|                    | N201 Beige/Beige       | 22 | 45               | 33 | 14   | 0.46     | 0.45     | 0.38      |
|                    | N901 Charcoal/Charcoal | 14 | 2                | 84 | 9    | 0.75     | 0.71     | 0.53      |
|                    | N902 Charcoal/Bronze   | 13 | 4                | 83 | 9    | 0.74     | 0.70     | 0.52      |

#### SPECIFICATIONS

| Series           | 4000 NET 3%  | 4000 NET 5%  | 4000 NET 10%   |
|------------------|--|--|--|
| Composition      | 27% Polyester, 73% PVC                                 | 27% Polyester, 73% PVC                                 | 27% Polyester, 73% PVC                                 |
| Openness Factor  | Average 3%   | Average 5%   | Average 10%  |
| Weight           | 16.07 oz/yd <sup>2</sup> (545 g/m <sup>2</sup> ) +/-5% | 15.34 oz/yd <sup>2</sup> (520 g/m <sup>2</sup> ) +/-5% | 13.86 oz/yd <sup>2</sup> (470 g/m <sup>2</sup> ) +/-5% |
| Thickness        | 0.029 in (.75mm) +/-5%                                 | 0.027 in (.70mm) +/-5%                                 | 0.025 in (.66mm) +/-5%                                 |
| Fabric Count     | 42 ends x 36 picks/inch <sup>2</sup>                   | 36 ends x 36 picks/inch <sup>2</sup>                   | 36 ends x 29 picks/inch <sup>2</sup>                   |
| Tensile Strength | Warp 270/Weft 215 daN/5cm                              | Warp 215/Weft 225 daN/5cm                              | Warp 255/Weft 110 daN/5cm                              |
| Tearing Strength | Warp 12.5/Weft 12.0 daN                                | Warp 12.4/Weft 13.8 daN                                | Warp 27.1/Weft 24.1 daN                                |
| Colorfastness    | Grade 8  | Grade 8  | Grade 8  |
| Standard width   | 98.4" (2.5m)   | 98.4" (2.5m)   | 98.4" (2.5m)   |
| Standard length  | 33 yd/roll (30m)                                       | 33 yd/roll (30m)                                       | 33 yd/roll (30m)                                       |

Standard fabrics available in 98.4" (2.5m) width. Limited selection available in 78.7" (2m) and 118" (3m) widths.