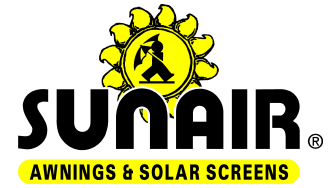


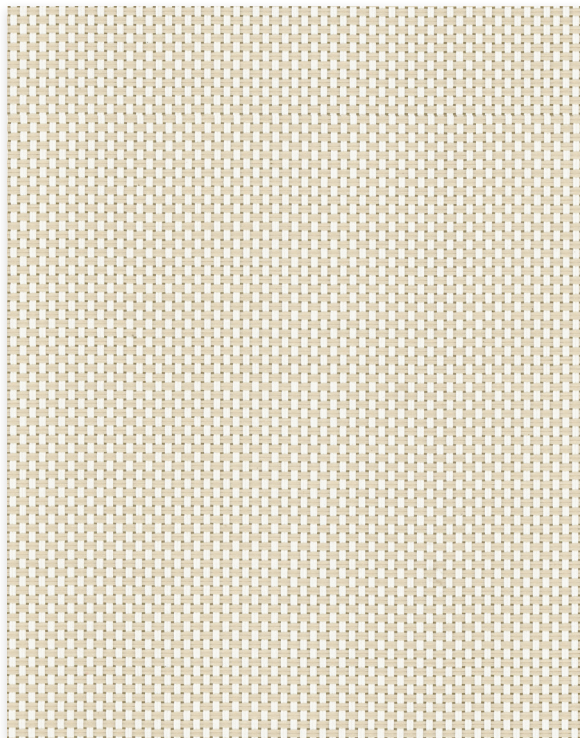
# Natte

Conventional | 5% 10% openness



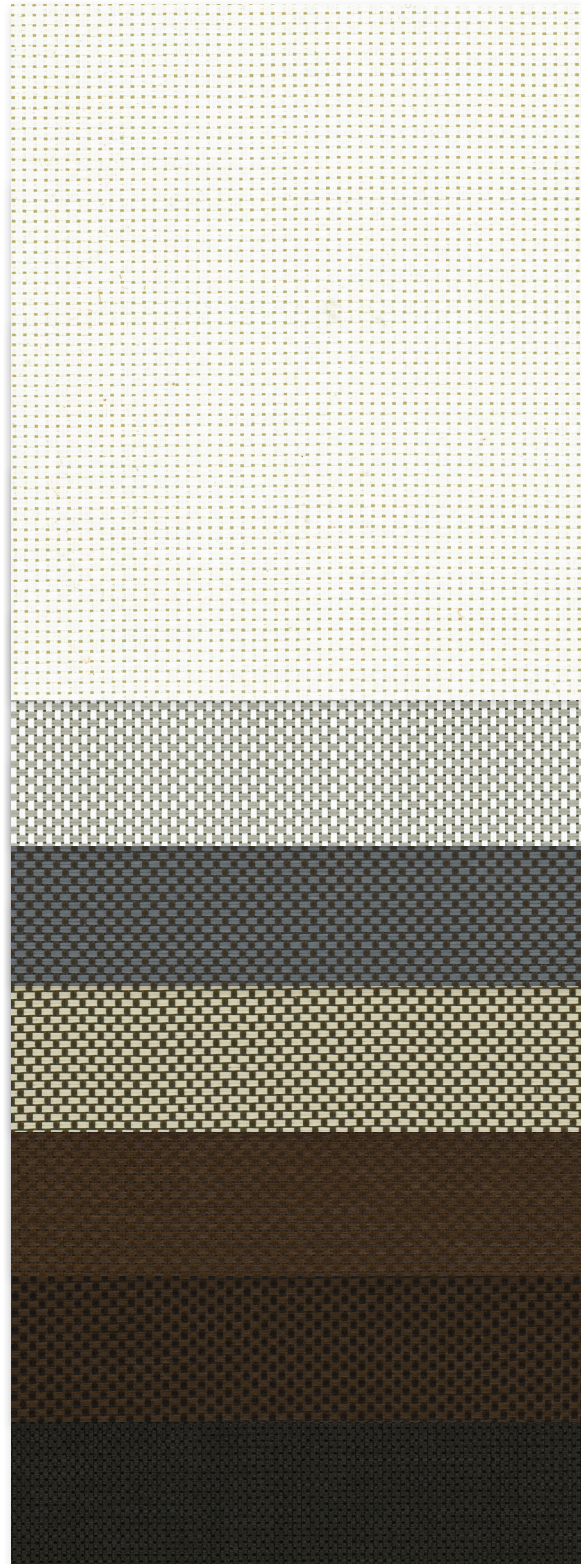
5%

902920 | White/Linen



10%

902920 | White/Linen



902902  
White/White

902907  
White/Pearl

961901  
Cocoa/Grey

961923  
Cocoa/Straw

961961  
Cocoa/Cocoa

930961  
Charcoal/Cocoa

930930  
Charcoal/Charcoal

Fabrics sampled on waterfall are 5% openness.



# Specifications

Item Number	<b>5%</b> 004505   <b>10%</b> 004500
Product Category	Conventional
Fabric Style	Basketweave
Openness Factor	5% & 10%
Composition	42% Fiberglass   58% Vinyl
UV Blockage	Approximately 90% - 95%
Standard Packaging	Rolls of 55 ly (50 lm)
Width	98 in (250 cm)   122 in (310 cm) available in select colors - Charcoal/Charcoal (930930) & Charcoal/Cocoa (930961)
Weight	<b>5%</b> 14.13 oz/yd <sup>2</sup> (479 g/m <sup>2</sup> )±5%   <b>10%</b> 13.48 oz/yd <sup>2</sup> (457 g/m <sup>2</sup> )±5%
Thickness	<b>5%</b> 0.022 in (0.56 mm)±5%   <b>10%</b> 0.021 in (0.53 mm)±5%

# Classifications

Fire Classifications	NFPA 701-10 TM#1, California U.S. Title 19, CAN/ULC-S109-03 Small & Large Flame Test
Bacterial & Fungal Resistance Environment	ASTM E2180, ASTM G21
Acoustical Performance	RoHS - Lead Free, GREENGUARD Gold <b>5%</b> NRC: 0.05, SAA: 0.06   <b>10%</b> NRC: 0.05, SAA: 0.04

# Fabrication

**Cutting:** Cold, Ultrasonic or Crush | **Welding:** Radio Frequency, High Frequency, Impulse, Hot Air or Wedge  
We recommend testing all cutting and welding methods prior to use to confirm they meet your individual fabric specifications.

# Natte

ITEM	COLOR
902920	White/Linen
<b>902902</b>	<b>White/White</b>
902907	White/Pearl
<b>961901</b>	<b>Cocoa/Grey</b>
961923	Cocoa/Straw
<b>961961</b>	<b>Cocoa/Cocoa</b>
930961	Charcoal/Cocoa
<b>930930</b>	<b>Charcoal/Charcoal</b>

FABRIC										FABRIC + GLASS										
thermal						optical				commercial				residential						
Total Solar										SHGC % Improvement				SHGC						
Rs (%)	As (%)		Ts (%)		Rv (%)				Tv (%)				Interior		Exterior		Interior		Exterior	
5	10	5	10	5	10	5	10	5	10	5	10	5	10	5	10	5	10	5	10	
61	59	21	20	18	21	65	63	15	19	50	45	76	74	0.33	0.38	0.16	0.18			
<b>72</b>	<b>70</b>	<b>10</b>	<b>8</b>	<b>18</b>	<b>22</b>	<b>77</b>	<b>75</b>	<b>16</b>	<b>20</b>	<b>55</b>	<b>53</b>	<b>79</b>	<b>74</b>	<b>0.29</b>	<b>0.32</b>	<b>0.16</b>	<b>0.19</b>			
48	49	40	36	12	15	51	52	10	14	42	37	82	79	0.39	0.43	0.13	0.14			
<b>14</b>	<b>13</b>	<b>78</b>	<b>77</b>	<b>8</b>	<b>10</b>	<b>13</b>	<b>12</b>	<b>7</b>	<b>10</b>	<b>18</b>	<b>13</b>	<b>79</b>	<b>82</b>	<b>0.55</b>	<b>0.63</b>	<b>0.14</b>	<b>0.12</b>			
29	25	63	64	8	11	30	26	7	11	26	21	84	82	0.52	0.56	0.11	0.13			
<b>8</b>	<b>7</b>	<b>85</b>	<b>84</b>	<b>7</b>	<b>9</b>	<b>8</b>	<b>7</b>	<b>7</b>	<b>9</b>	<b>13</b>	<b>11</b>	<b>82</b>	<b>82</b>	<b>0.63</b>	<b>0.65</b>	<b>0.12</b>	<b>0.12</b>			
6	5	87	82	7	13	6	5	8	13	13	11	82	79	0.64	0.67	0.12	0.15			
<b>4</b>	<b>4</b>	<b>89</b>	<b>83</b>	<b>7</b>	<b>13</b>	<b>4</b>	<b>4</b>	<b>7</b>	<b>13</b>	<b>13</b>	<b>8</b>	<b>76</b>	<b>79</b>	<b>0.59</b>	<b>0.67</b>	<b>0.15</b>	<b>0.15</b>			

# Warranty

10 Year

# Care & Cleaning

Remove dust with vacuum cleaner or compressed air. Do not scrub. Do not use solvents or any abrasive substance which might damage the coating of the fabric. Clean with a sponge or a soft brush dipped in soapy water using mild detergent. Rinse with clean water. Leave the blind down until completely dry. You can also very gently rub the fabric with a clean white pencil eraser to remove small stains.

The fabric performance tests were conducted in accordance with ASTM E991 & ASTM E903-96: Total Solar Transmittance (Ts), Total Solar Reflectance (Rs), Total Solar Absorptance (As), Visible Reflectance (Rv), and Visible Transmission (Tv). Glass performance tests for Solar Heat Gain Coefficient (SHGC) were conducted using the Lawrence Berkeley National Laboratory Window 7.3 NFRCC certified software. SHGC % improvement for commercial applications is based on a standard commercial glass makeup of Double Glazing 6 mm / 1/2" air / 6 mm with low E on surface #2. SHGC for residential applications is based on a default residential glass makeup of 3mm clear glass / 1/2" air / 3mm clear glass. Results for SHGC were obtained using the center of glass. For up-to-date test results, performance specifications and larger samples, contact the Mermet Technical Department at: [www.mermetusa.com](http://www.mermetusa.com).

Mermet Corporation  
5970 N. Main Street ■ Cowpens, SC 29330  
Ph 1.866.902.9647 ■ [info@mermetusa.com](mailto:info@mermetusa.com)

[mermetusa.com](http://mermetusa.com)